

# DRIVING TIME TO HIV PREVENTION SERVICES IN SAN FRANCISCO AND ALAMEDA COUNTIES

## BACKGROUND ON HIV, HOUSING, & MIGRATION



California (CA) has the **2<sup>nd</sup>** highest number of HIV diagnoses of all states.

In CA, most HIV diagnoses are among ethno-racially minoritized people:

**57%**

among Hispanic/Latino individuals

**15%**

among African American/Black individuals

Most diagnoses occur among... **25-34** year olds



**Homelessness & housing insecurity** are also drivers of HIV

Housing costs are high in CA, especially in **SAN FRANCISCO**.

The average home is **\$1,200,000** (Source: Zillow)

**\$3,700** is the average rent (Source: Zillow)

Within CA, people are leaving San Francisco to

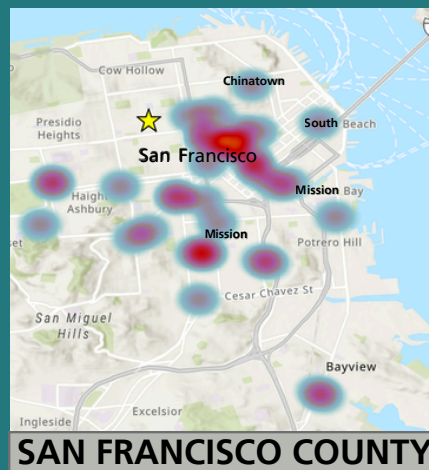
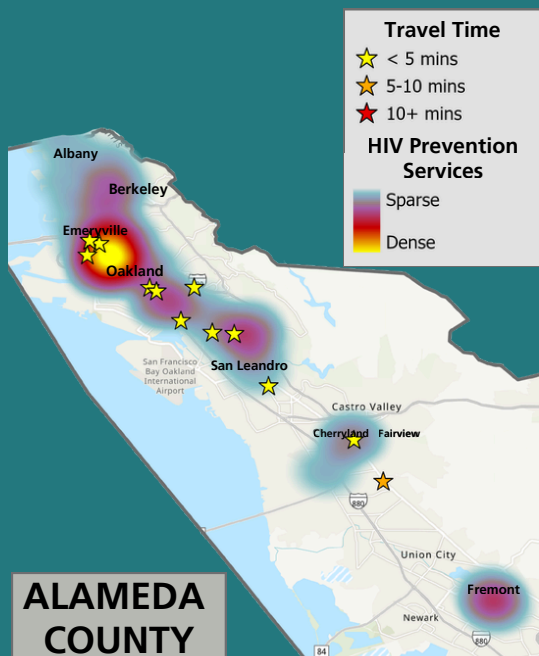
**ALAMEDA COUNTY.**

### OUR OBJECTIVE:

- 1) Identify areas at higher risk of HIV.
- 2) Determine how long it takes to drive from these areas to HIV prevention services.
- 3) Categorize the different types of HIV prevention service providers in these counties.

## RESULTS

### TRAVEL TIME TO THE CLOSEST HIV PREVENTION SERVICE IN THE AREAS WITH HIGHER HIV RISK...



### WHAT DOES 'HIGHER HIV RISK' MEAN?



Higher-risk areas ☆ are census tracts with a higher percentage of people who were:

- 1) 20 - 34 years of age,
- 2) Black, Hispanic/Latino, Native American, or multiracial, and
- 3) Low-income renters spending more than 50% of their income on rent.

### WHAT DOES THIS MEAN?

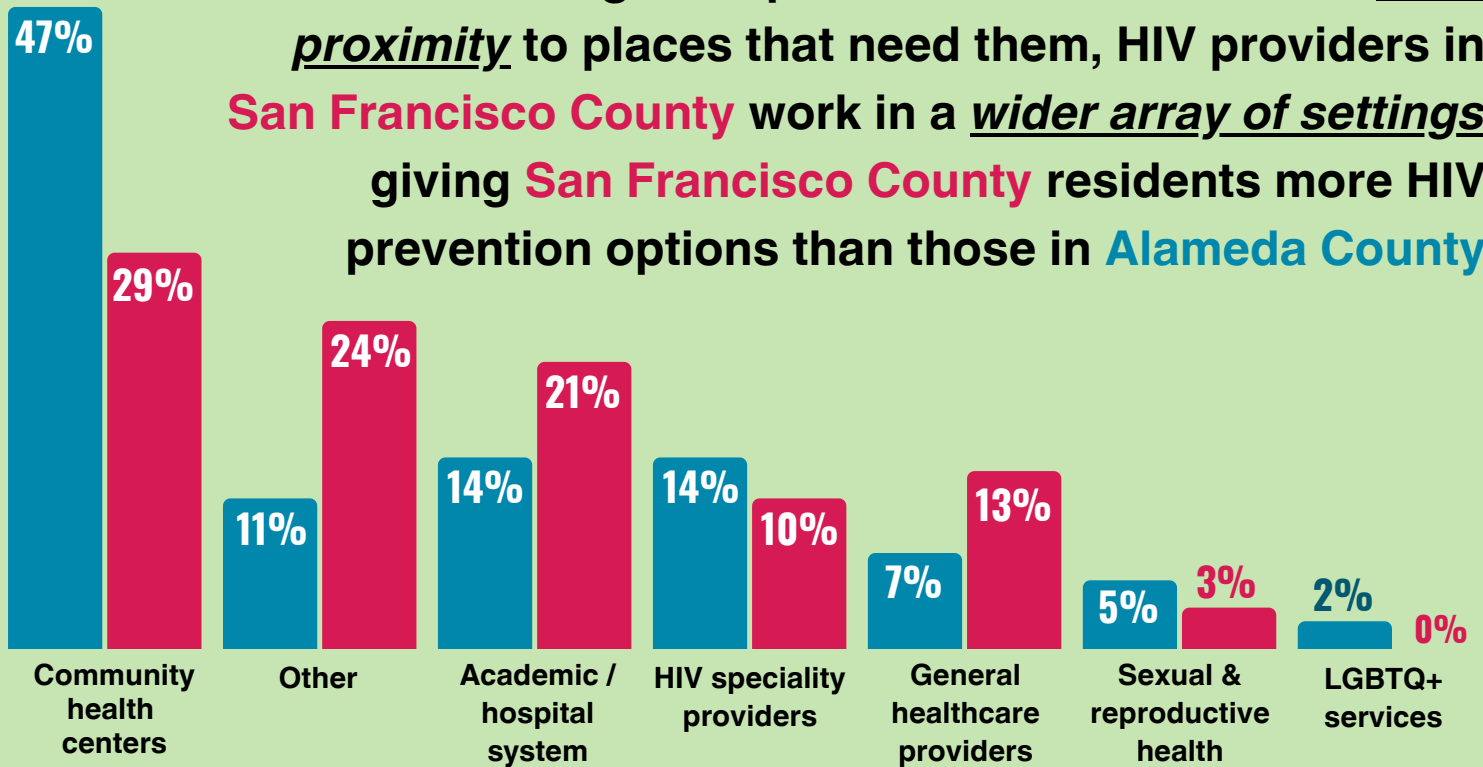


- HIV prevention services are within a **short** drive of areas with heightened HIV risk.
- Just because a clinic is close by **does not** mean that it is preferred, culturally affirming, or that people know about its services.

### MAP LIMITATIONS:

- Does not account for traffic patterns.
- Does not account for public transport vs. personal vehicle.
- Maps only include census tracts identified as higher HIV risk.

Even though HIV prevention services are in close proximity to places that need them, HIV providers in **San Francisco County** work in a wider array of settings, giving **San Francisco County** residents more HIV prevention options than those in **Alameda County**.



- People in San Francisco are moving to a county with **fewer medical providers**.
- Alameda has a **lower density** of medical providers than San Francisco.

## TAKE-HOME MESSAGE



More investment is needed in Alameda County as more people continue to relocate to this **high HIV burden** but historically lower resourced area, which has **fewer doctors** and **less culturally affirming services**.



Locate HIV resources near you!



Harm Reduction Coalition of San Diego



FUNDING FROM:  
CALIFORNIA HIV/AIDS RESEARCH PROGRAM (H25PC9524)