



TransVision Program Overview

Malaya Arevalo – HIV Care & Prevention Program Manager

Pia Cruz – TransVision Program Supervisor

Gino DeGuzman – Community Health Worker II

Bay Area Community Health

OUR MISSION

To deliver exceptional health and social services that improve quality of life for the individuals, families, and communities we serve

OUR VISION

For everyone in our community to have access to high quality, comprehensive, and affordable health care



Bay Area Community Health



MEDICAL



DENTAL



BEHAVIORAL HEALTH



VISION



SPECIALTY CARE: Acupuncture,
Chiropractic, Dermatology,
Podiatry



A Community Asset

68,948

Distinct Patients from Alameda and Santa Clara Counties

Bay Area Community Health Programs

- Women's Health
- Teen Wellness
- HIV
- TransVision
- Homeless Programs



TransVision Vision Statement

We seek a world where everyone has access to high quality, comprehensive, and affordable healthcare regardless of one's sexual orientation, gender identity, or how one expresses one's gender and that everyone feels seen, heard, and empowered in their healthcare choices.



TRANS VISION Timeline

- **Established in 1970** as Tri City Health Center (TCHC) now known as Bay Area Community Health (BACH)
- **1993:** Began providing comprehensive services for People Living with HIV/AIDS (PLWH/A)
- **2002:** Created TransVision to address the HIV service needs of transgender people
- **2010:** Broadened scope to include outreach, education, gender-affirming hormone therapy (GAHT), and behavioral health (BH) services for transgender and LGBTQ+ clients
- **2012:** Brandy Martell Project launched
- **2017:** PrEP/nPEP services began
- **2020:** Received multiyear CDC funding
- **2025:** Expansion to Santa Clara County



TransVision Program Services



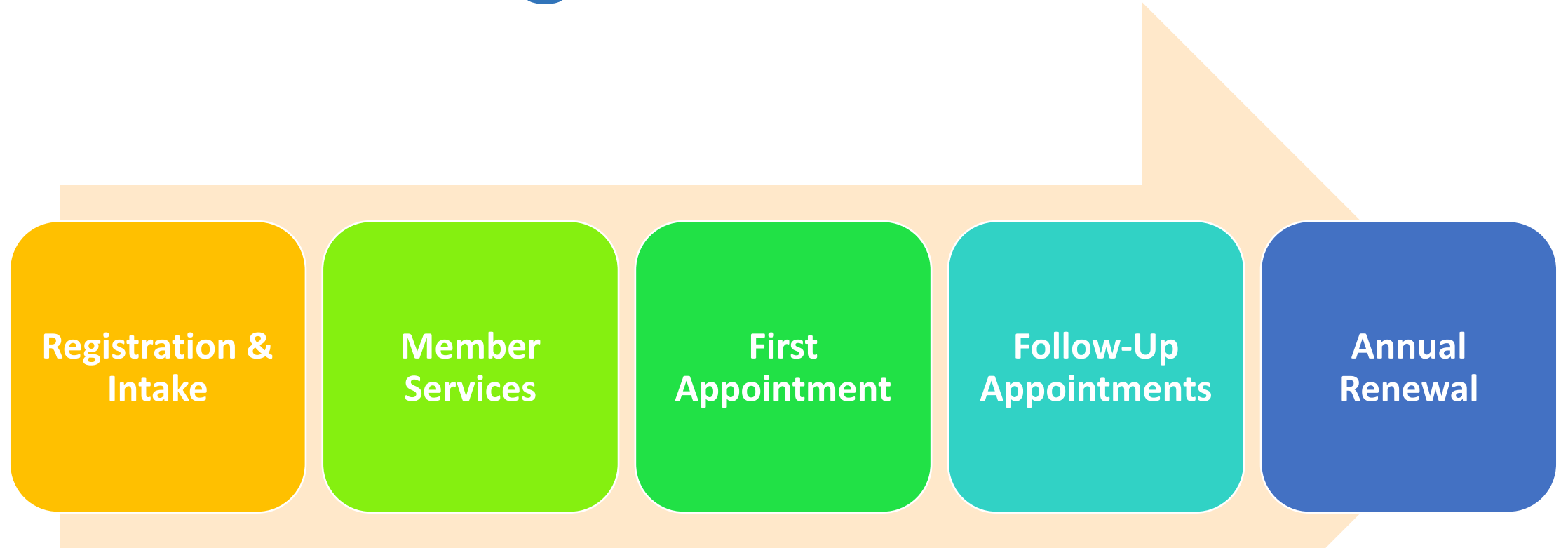
- Program Office: Liberty Clinic (Fremont)
 - In-Person: Tuesday/Friday
 - Telehealth: Monday - Friday
- Gender Affirming Care
 - Primary Care
 - Gender-Affirming Hormone Therapy
 - Gender-Affirming Surgery Letters
 - Name/Gender Marker Change Assistance
 - Injection Supplies
- HIV & STI Prevention (PrEP/PEP, Doxy-PEP)
- Community Outreach & Engagement

Client Demographics

- 534 Individuals from Jan 2024 – May 2025
- 2207 Appointments
- 62% Between 30 – 64yo
- 64% Trans Female (35% White; 31% POC)
- 40% Latinx
- 76% Alameda County; 17% Santa Clara County; 10% Other
- 150+/- are on PrEP (oral and injectable)



Patient Registration



Importance of Safe Spaces for Transgender and Gender Expansive Patients

Equity, and Addressing Discrepancies

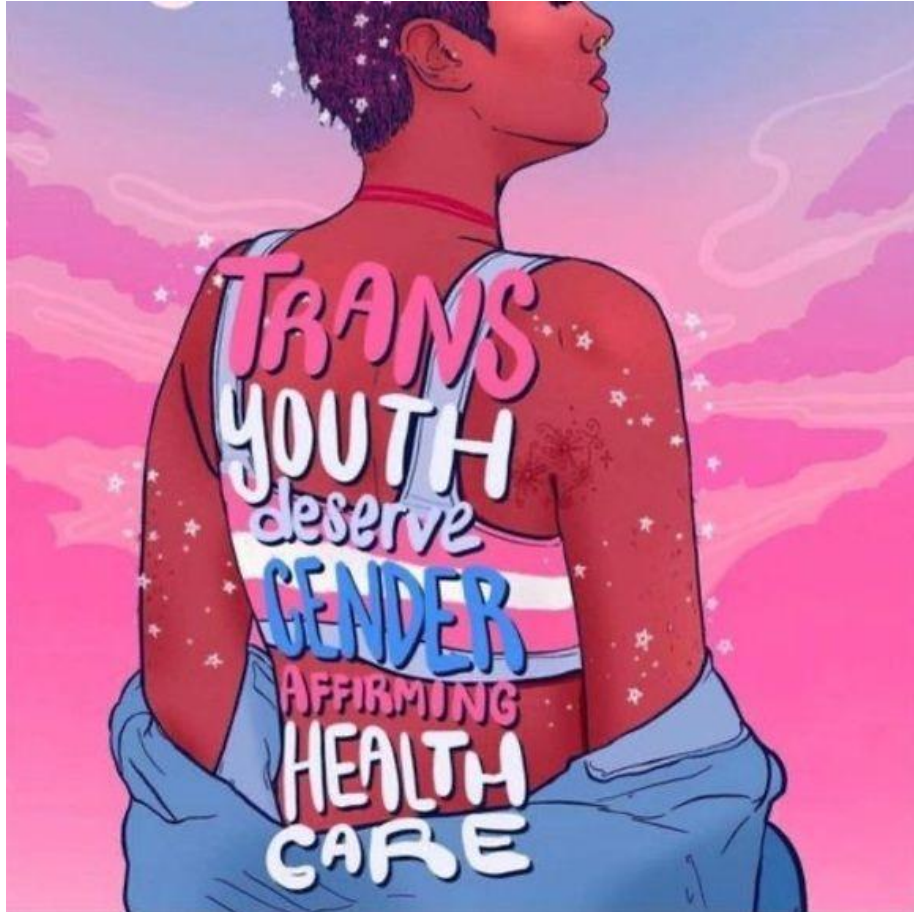
- Trans and Gender Expansive (TGE) individuals face widespread discrimination and marginalization in our society. In addition, policies which focus on uplifting the queer community frequently fall short of meeting TGE access needs.
- Creating safe spaces demonstrates our solidarity with TGE community and provides an environment which fosters comfort and safety.

Current Political Climate

- With our current administration, attacks on the TGE community have been devastating and widespread (athletics, attacks from FBI, passport and drivers license restrictions). It becomes even more essential and pressing that helping our TGE patients and clients feel supported and seen during this time.
- Public Health disparities have reached an all-time high, especially with federal government restrictions on access to care.



Creating Safe Spaces

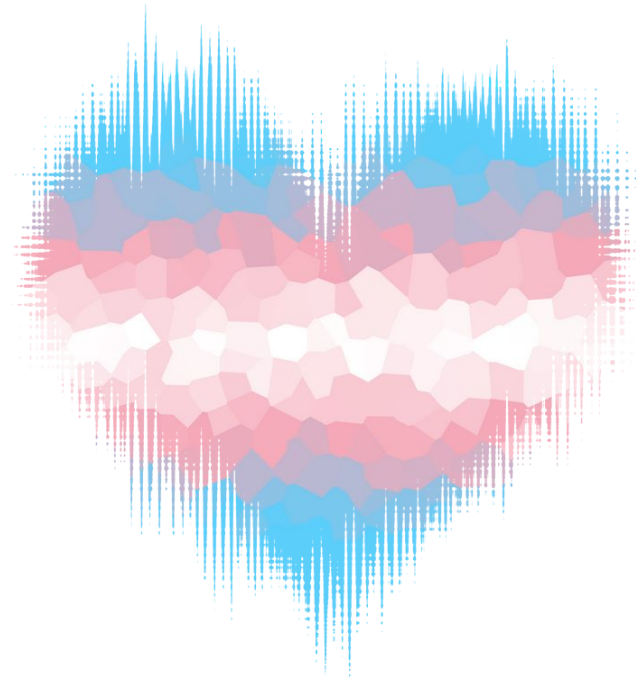


- For transgender and gender-expansive individuals, feeling how welcoming a safe space will be, is readily apparent upon first perception of the physical space. Options for environmental affirmation include:
- Displaying artwork from queer/trans artists
- Having available pronoun pins and stickers
- Creating a space with a soft, warm, color palette

Creating Safe Spaces

Gender Affirming Policy

- Putting into place policies and workflows which speak to breaking down systemic barriers, improving patient care by maximizing individual comfort and patient-centric decisions.
- Policy which focuses on the informed-consent model, highlighting individual autonomy in gender care.
- Intake forms which contains space for pronoun options, as well as asking questions regarding reproductive organs in a gender-neutral way



Creating Safe Spaces

Caring and Supportive Staff

- Train staff on how to best approach gender-affirming care
- Encourage staff to display their pronouns on their own pins, and in their email signatures
- Create a workplace culture that seeks out diversity and inclusivity as part of program ideals and mission





BAY AREA
COMMUNITY
HEALTH

Q&A

**Please Reach Out to Us!
We Would Love to Hear From You.
:)**

**Malaya Arevalo – HIV Care &
Marevalo@bach.health
510-252-5840**

**Pia Cruz – TransVision Program
Supervisor
Pcruz@bach.health
408-709-6953**

**Gino DeGuzman – CHW II
gdeguzman@bach.health**

**TransVision Program
39500 Liberty St.
Fremont, CA 94538
transvision@bach.health
510-252-5818**

