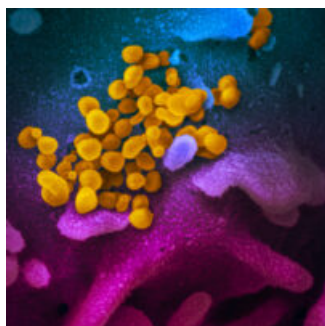


[Home](#) / [COVID-19](#) / [COVID updates](#) / [COVID-19 and HIV updates](#)

COVID-19 AND HIV UPDATES

FEBRUARY 17, 2021

[SIGN UP FOR OUR BIWEEKLY NEWSLETTER HERE](#)



The SARS-CoV-2 virus
(NIAID)

Below are this week's East Bay COVID-19 and HIV updates. This page is usually updated on Wednesday evenings with data and resources gathered from many collaborators in Alameda County, Contra Costa County, Solano County, CA state.

[VACCINES](#)[MASKS](#)[GUIDANCE](#)[RESOURCES & LINKS](#)[ARCHIVES](#)[PDF SUMMARY](#)

Click on these links for vaccines, masks, guidance on prevention, testing and wellness, resources and links, archived weekly updates and the weekly PDF summary. East Bay HIV service organizations are providing services by

phone, video with some in-person visits available.

Jump to:

- [Key updates](#)
- [Vaccine updates](#)
- [Trends in cases and transmission rates](#)
- [Disparities: new data and studies](#)
- [Harm reduction tips: should I double mask?](#)
- [Trainings, funding, job opportunities and other resources](#)
- [Top links, guidance and where to get tested](#)

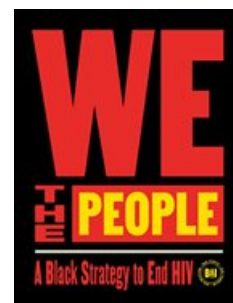
Join us on Thursday, February 25, 2021 11-12:30 PM for State of the Pandemic in Alameda County:

COVID-19 Conversations on Vaccines, Variants, and More. There will be a presentation, conversation and ample time for live Q&A. Learn more about the current state of COVID-19 in Alameda County, the vaccine and roll-out, and strategies that will protect your patients, consumers, and community from the virus and

misinformation.

Last week the Black AIDS Institute released a video accompaniment to their report: ***We The People: A Black Strategy to End HIV***. Check out the report and video [here](#).

A survey for all health care workers: UCSF's Center for AIDS Prevention Studies is calling all health care workers (broadly defined) for a 10-25-minute survey about their experiences during COVID-19. The survey includes an optional \$100 Amazon gift card raffle. The consent and survey can be accessed [here](#).



EAST BAY COVID-19 UPDATES

COVID-19 daily case and hospitalization rates have decreased over the past month but are still at high levels in the Bay Area. Death rates have begun to decline after record highs. Estimated [transmission rates](#) in the Bay Area have been below 1 (0.61 to 0.78), so cases are decreasing. [Bay Area ICU capacity](#) is up at 24% as of February 16.

We will need to continue to **wear masks, keep distance and get vaccinated as soon as we can**, especially with [more infectious variants](#) identified in the Bay Area. The **South African variant** was reported on February 10 in Alameda and Santa Clara Counties. Please see below for more prevention tips. It's a race against mutants!

Vaccinations are available now for health care workers, nursing home residents and people over 65. Starting February 8 in Alameda County, a small group of essential workers in education/child care, emergency services and food/agriculture became eligible for vaccines under Phase 1b Tier 1. This week vaccine deliveries are delayed due to the winter storm and may require some sites to cancel appointments if they don't have enough supply to last through the week.

The Alameda County Fairgrounds mass vaccination site opened on February 15 (pictured here) and is focusing on vaccines for people ages 65 and older. The Fairgrounds site aims to administer 2,000 doses per day this week and will scale up to 5,000 doses per day when the county receives enough vaccine supplies. [Click here](#) to sign up for county vaccine invitations for this site.

The Oakland Coliseum mass vaccination site opened on February 16 to all eligible community members in the region! [Click here for the MyTurn webpage](#) to check eligibility and appointment availability. People ages 65 and older and some frontline workers (health care workers, educators, food/agriculture and emergency workers) are eligible. New appointment slots are added to many sites as vaccine supply comes in, so keep



checking and sign up for notifications. [Click here to watch a video](#) from NBC Bay Area on what to expect at the Coliseum vaccination site.

CVS pharmacies and **Rite Aid pharmacies** in the region are also now vaccinating healthcare workers and people 65 and older.

Providers are encouraged to talk with patients and clients about vaccinations to combat misinformation and address concerns. Communities of color continue to turn to their trusted health providers for counsel, and [providers are changing minds about vaccinations](#). The ICD-10 code **Z71.89** may be used for vaccine counseling done in medical provider visits. Dr. Sunny Lai from Highland's HIV clinic compiled [Guidance for talking with patients about vaccines and FAQs for PLWH](#) ([click to download the PDF](#)).

People needing medical care for any condition are still encouraged to seek care as our clinics and hospitals remain open with strict safety protocols to take care of all people.

COMMUNITY VACCINE SPOTLIGHT



Jesse Brooks, Community Advocate and EBGTZ Advisory Board Chair, says: "Being vaccinated was important to me, I can't wait to get back to some resemblance of normalcy. I miss my family, and especially my 86-year-old mother. The worst for me have been all the deaths, bringing up PTSD from the early years of HIV. It's been challenging living in daily fear of contracting COVID-19 or worse, passing it on to loved ones. As a community leader I felt the demonstration to the community and my family was important, knowing the mistrust that exists and knowing that it's a challenge to put those fears to rest. I also felt I was at increased risk because of

my age and comorbidity of diabetes."

VACCINE ELIGIBILITY AND ACCESS

As of February 17, Alameda County, Contra Costa County, and Solano County are prioritizing vaccinations for health care workers, people in nursing homes and people over the age of 65. CA vaccine priority groups are [defined here](#).

Alameda County also opened eligibility to workers in education and child care, emergency services, and food/agriculture starting February 8 prioritized by exposure and disproportionate risk and are invited to appointments as vaccine supplies allow. Family care givers also now qualify for vaccines as health care workers in Alameda County as of February 5. Family care givers must provide an attestation letter that documents that they provide hands-on care for a person with a disabling condition that puts them at risk for severe COVID-19. An attestation letter template will be available on the [Alameda County website](#).

To access vaccines, we recommend the following steps:

1. **Sign up for all the notification systems** available to you: see links below.
2. **Check on your vaccine eligibility** with your medical provider and/or county for when the vaccine is available for your age or occupation group. See links below.
3. **When vaccine is available** for your group:
 - If the notification systems work, you should get a link for appointments when vaccine is available for your group.
 - Check online or call your medical provider periodically for appointment availability.
 - If you cannot get a vaccine through your health provider, check if you can get a vaccine through a public (county) vaccination site.
 - Don't give up! (Even though it sure can be frustrating and confusing.) Keep checking and trying; eventually there will be enough vaccine.

All COVID-19 vaccines should be available at no cost.

Notifications for when vaccine is available for you:

There is no unified notification system, so you may choose to sign up for many different notification systems to stay informed about the full breadth of vaccination opportunities available to you:

- [City of Berkeley notifications](#)
- [Alameda County notifications](#)
- [Solano County notifications](#)
- [California State MyTurn notifications](#)
- You can also find out if your medical provider has a notification system.

Vaccines through medical providers:

- **Kaiser members**
- **Sutter members**
- **Stanford Health members**
- Many **community health centers** are providing vaccine appointments to eligible members. Please contact your provider to find out more.

Vaccines for the public at mass vaccination sites (new!):

- **Oakland Coliseum FEMA/CA site opened on February 16!** [Click here for the MyTurn webpage](#) to check eligibility and appointment availability. People in the region over age 65 and some frontline workers (health care workers, educators, food/agriculture and emergency workers) are eligible. Appointment slots are added as supplies come in, so keep checking for availability if you first don't succeed. [Click here to watch a video](#) from NBC Bay Area on what to expect.
- **Alameda Fairgrounds opened on February 15!** [Click here](#) to sign up for county notifications for appointments at this site.
- **The Berkeley Golden Gate Fields Buchanan parking lot site** opened on January 28 for

people living in northern Alameda County.

Vaccines through pharmacies (new!):

- **CVS pharmacies:** vaccinating healthcare workers and people 65 and older.
- **Rite Aid pharmacies:** vaccinating healthcare workers and people 65 and older.

Vaccines for the public through county vaccination sites:

- **Alameda County COVID-19 vaccine updates and notifications**
 - As of February 17, people ages 65+, health care workers, nursing home residents and a limited number of essential workers in food/agriculture, education/child care and emergency services are eligible.
 - Notifications will be sent out when vaccines are available for your group from county-supplied sites. Kaiser and Sutter get their own supply, so members have to check availability with them separately.
 - Health care workers need to sign up as "health care providers" to get notifications.
 - City of Berkeley vaccine notifications: [click here to register](#)
- **Contra Costa County COVID-19 vaccine updates and appointments**
 - As of February 17, [appointments](#) are available for health care workers and people ages 65+. Please [click here](#) and go to "making an appointment."
 - To bring equity-related concerns to Contra Costa County's attention, [click here](#).
- **Solano County vaccine updates, notifications and access points**
 - As of February 17, health care workers, people ages 75+ and people 65+ with medical conditions are eligible for vaccinations.
 - Please [click here](#) and scroll to the bottom to see info on where to access vaccines.

Vaccine appointments are still difficult to access due to limited and uneven vaccine supplies, a fragmented health care system, and a confusing eligibility system. For example, one medical provider may have enough supply to vaccinate people ages 65+ while another only has enough to vaccinate people ages 75+. In addition, while essential workers in education/child care, food/ag and emergency services are "eligible" in Alameda County, the county has an internal priority sequences to invite sub-groups of these essential workers based on exposure, age, uninsured status and zip codes at highest risk. The [Oakland Coliseum](#) mass vaccination site will bring in thousands of more vaccines to the region and will hopefully streamline availability.

Who is eligible for vaccines now?

Bay Area counties are following CA state guidelines on vaccine prioritization, which were updated on February 1:

Vaccine Prioritization Framework *as of 1/25/21*

Phase 1a -NOW	Phase 1b -NEXT	Phase 1c	Phase 2	Phase 3	Phase 4
Health Care Workers Tier 1 <ul style="list-style-type: none">• Hospitals• Dialysis• EMTs• Long-Term Care	Tier 1 <ul style="list-style-type: none">• Ages 65+• Essential Workers• Education/Child Care• Emergency Services• Food/Agriculture	<ul style="list-style-type: none">• Essential Workers• Government/Ops• Water/Waste/Energy/Chemicals• Ages 50+• Ages 16-49 with	<ul style="list-style-type: none">• Moderate underlying health conditions	<ul style="list-style-type: none">• Young Adults• Children• Workers not covered in phases 1 or 2	<ul style="list-style-type: none">• Anyone who did not access Phases 1, 2 or 3

Facilities/Skilled Nursing

Tier 2

- Community Health Workers
- IHSS/Home Health Care
- Primary care, behavioral health, & specialty providers

Tier 3

- Dentists
- Blood Banks
- Pharmacy Staff

Tier 2

- Essential Workers
 - Transportation/logistics
 - Industrial/commercial/Residential/Sheltering
 - Critical manufacturing
 - Congregate Settings
 - Incarcerated
 - Unhoused (unsheltered)

underlying health conditions

On 1/25/21, Governor Newsom announced that the State will be shifting to an age-based framework after Phase 1b, Tier 1

On 2/1/21, Dr. Pan announced a Phase 1b Tier 2 with those under age 65 but with comorbidities.

Alameda County Health Care Services Agency

Alameda County Public Health Department
Celebrating Healthy People in Healthy Communities

<https://covid-19.acgov.org/vaccines>

32 3

Alameda County additionally uses the following criteria to determine whom to invite to make appointments at county vaccination sites through their notification system:

Alameda County Vaccine Prioritization

Alameda County is now vaccinating:

- Health Care Workers
- People in Long Term Care Facilities
- People ages 65+
- Food/Agriculture/Restaurant/Grocery workers
- Emergency Services workers
- Education/Childcare workers

Within each category, prioritizing:

- Older adults
- MediCal or Uninsured
- Areas with very high COVID-19 case rates (HPI Q1 + priority zip codes)
- People with direct contact with clients or the public at work
- People who cannot work from home
- People with limited mobility

Appointments by invitation

Sign up for notification:
<https://covid-19.acgov.org/vaccines>

Alameda County Health Care Services Agency

Alameda County Public Health Department
Celebrating Healthy People in Healthy Communities

The CDC has updated their **quarantine guidance** for people who are fully vaccinated and exposed to COVID-19 in community settings: “People who have been in close contact with someone who has COVID-19 are not required to quarantine if they have been fully vaccinated against the disease within the last three months and show no symptoms.”

PEOPLE LIVING WITH HIV AND COVID-19 VACCINES

Currently all people living with HIV (PLWH) are recommended to get the COVID-19 vaccine once eligible. California state announced that starting March 15, “healthcare providers may use their clinical judgement to vaccinate individuals age 16-64 who are deemed to be at the very highest risk for morbidity and mortality from COVID-19 as a direct result of one or more of the severe health conditions included in this [provider bulletin](#).” Advanced HIV was not listed as one of the severe health conditions, but providers can determine if “The individual is likely to develop severe life-threatening illness or death from COVID-19 infection.” There is **emerging**

data that people living with HIV and CD4 counts less than 200 are at greater risk for hospitalizations and death.

The [Moderna vaccine trial](#) included 179 PLWH and the [Pfizer trial](#) included 196 PLWH but data on these sub-groups has not been reported separately yet. There is currently no recommendation to check antibody levels for people living with HIV after completing vaccination. We are not sure yet how much commercially available SARS-CoV2 antibody tests such as at Quest and LabCorp check for protective levels of neutralizing spike antibodies generated by the vaccines, but providers and patients may discuss checking for spike IgG antibody levels two or more weeks after the second vaccine dose while we await more data.

HELP THE VACCINE ROLL-OUT EFFORT!

- All Alameda County health care providers are encouraged to [enroll in CalVax](#) to become vaccinators.
- To volunteer at a county vaccination site, [please register here](#).

MORE VACCINE RESOURCES

TRENDS IN CASES AND TRANSMISSION RATES

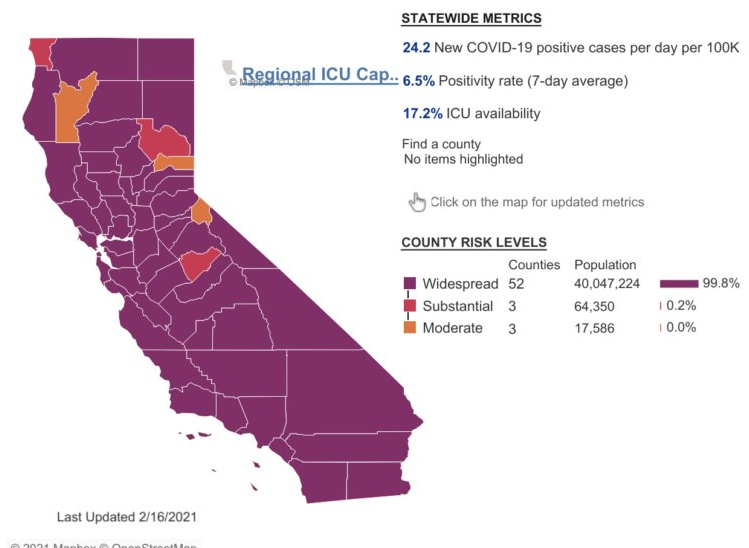
Transmission rates (Re) continue to be less than 1, which means cases are decreasing. As of February 15, the transmission rates were 0.78 in Alameda County, 0.77 in Contra Costa and 0.61 in Solano County, and 0.65 statewide. Our goal is to support the vaccine roll-out, masking, distancing, staying outdoors and avoiding gatherings to keep transmission rates less than 1.

ALAMEDA COUNTY AS OF FEBRUARY 17:

- Purple “widespread” tier week 14.
- 16.4 new cases of COVID-19 per day per 100,000 residents (down from 20.4 last week).
- 3.6% test positivity rate countywide (down from 4.7%).
- 5.9% test positivity in the lowest quartile [Healthy Places Index](#) (HPI) census tract (down from 7.6%).
- 0.78 transmission rate on the [Cal-CAT](#) model (down from 0.82).

CONTRA COSTA COUNTY AS OF FEBRUARY 17:

- Purple “widespread” tier week 14.
- 18.2 new cases of COVID-19 per day per 100,000 residents (down from 21.7).

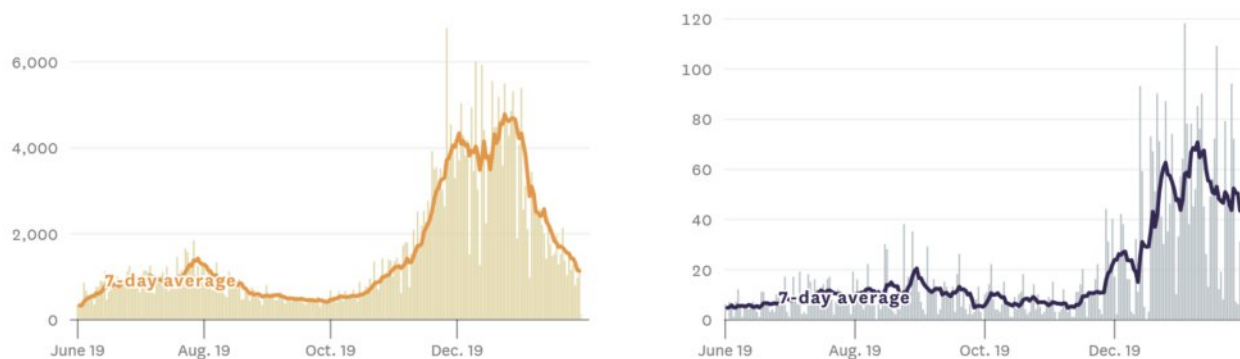


- 4.6% positivity rate (down from 5.7%).
- 7.3% test positivity in the lowest quartile HPI tract (down from 8.3%).
- 0.77 transmission rate (down from 0.78).

SOLANO COUNTY AS OF FEBRUARY 17:

- Purple “widespread” tier week 14.
- 19.2 new cases of COVID-19 per day per 100,000 residents (down from 26.4).
- 5.3% positivity rate (down from 6.3%).
- 6.8% test positivity in the lowest quartile HPI tract (down from 8.8%).
- 0.61 transmission rate (down from 0.72).

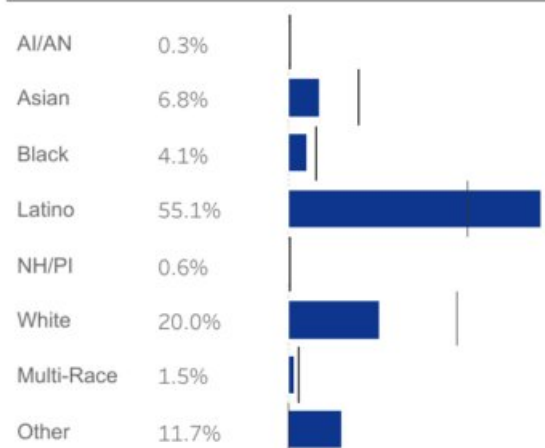
New reported cases and deaths in the Bay Area, by day



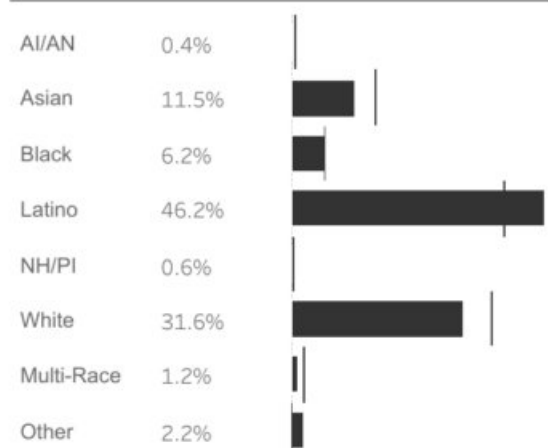
SF Chronicle, 2/17/21: COVID-19 daily cases and deaths in the Bay Area.

DISPARITIES: NEW DATA AND STUDIES

Positive cases by ethnicity



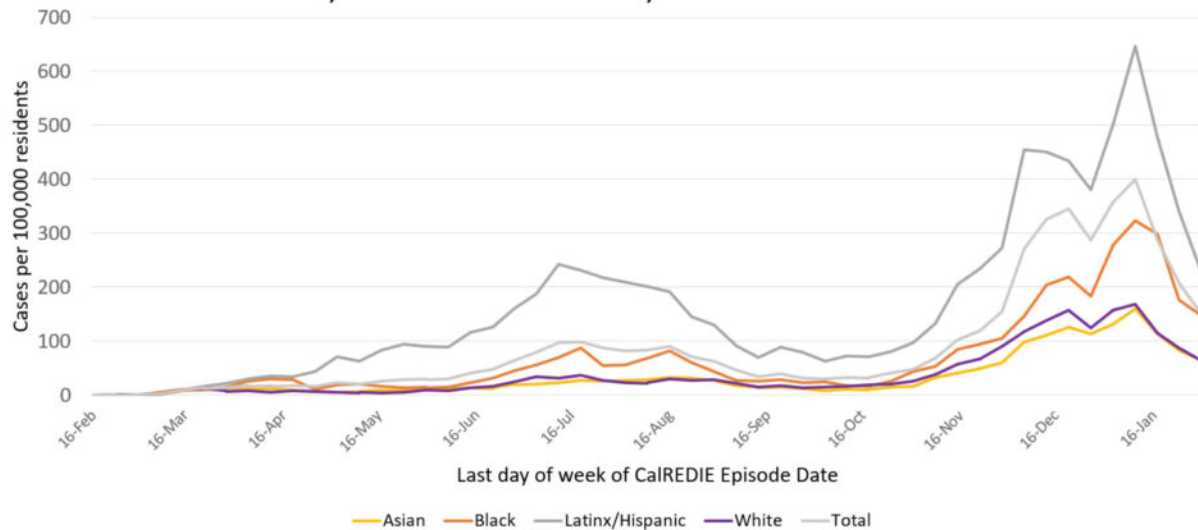
Total deaths by ethnicity



CDPH CA State COVID-19 dashboard 2/17/21: Latinx and Black/African American Californians

continue to be disproportionately impacted by COVID-19.

Alameda County COVID-19 weekly case rate



Includes City of Berkeley
Cases source: CalREDIE Data Distribution Portal download February 11, 2021 8:00 am.



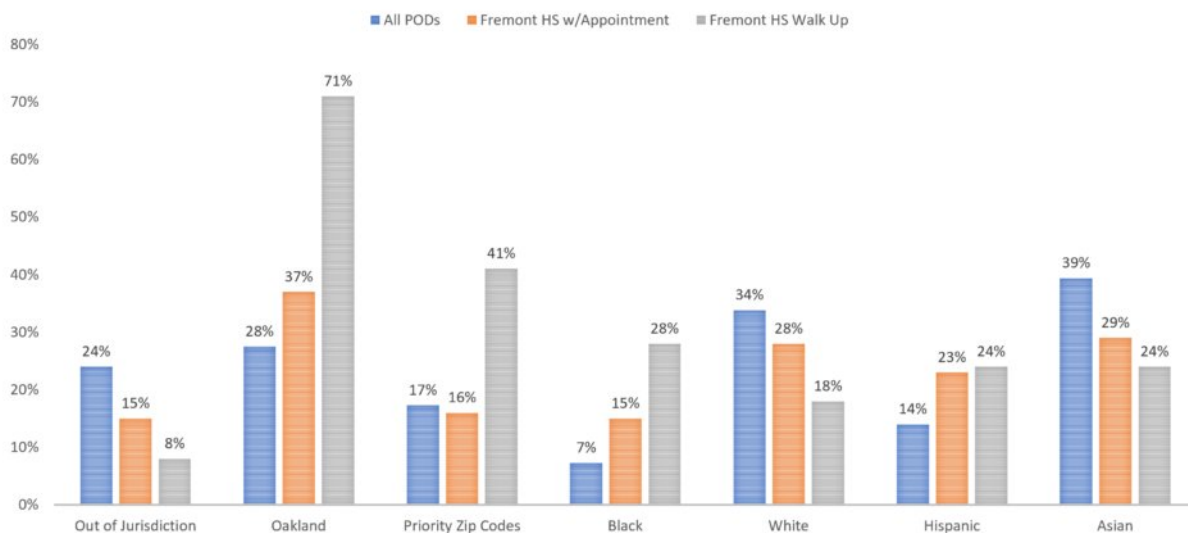
Alameda County
Health Care Services Agency



Alameda County Public Health Department
Celebrating Healthy People in Healthy Communities

In [Alameda County](#), while case rates continue to fall from their January peak among all race/ethnicity groups, Latinx people are still more than 4 times more likely to be diagnosed with COVID-19 than white people. Black/African American residents are nearly 2 times more likely to die from COVID-19 compared to their white neighbors.

FREMONT HIGH SCHOOL POD VS. ALL COUNTY PODS TO DATE



Alameda County
Health Care Services Agency



Alameda County Public Health Department
Celebrating Healthy People in Healthy Communities

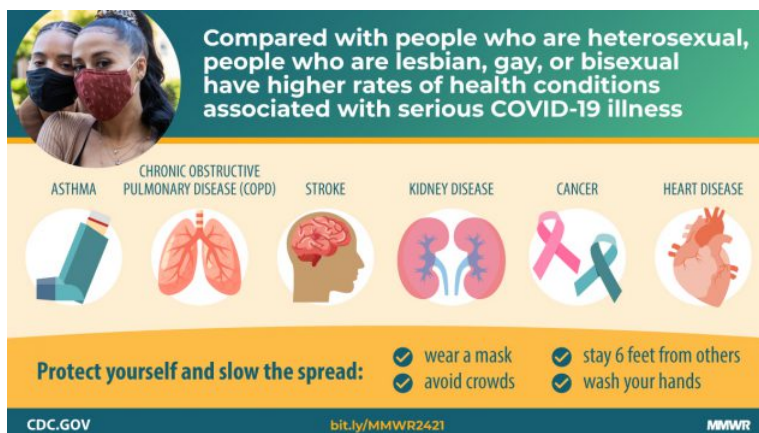
Alameda County vaccination equity data shows that Latinx and Black health care workers are underrepresented among those who have received vaccinations. However, in early February a vaccination

site at Fremont High School in East Oakland demonstrated in the graph above that allowing for walk-up vaccinations increased vaccination rates among Black and Latinx residents (see orange bars for vaccines by appointment and gray bars for vaccines by walk-up). The County will be advocating for more walk-up vaccination opportunities located in the hardest-hit neighborhoods.

A recent opinion article by Ana Delgado, a nurse midwife and Assistant Director of Inpatient Obstetrics at SF General, describes the importance of tackling white supremacy in healthcare and embodying reproductive justice during the pandemic.

A new CDC study shows that **people who are LGBTQ+ have higher rates of health conditions associated with serious COVID-19 illness** compared to people who are heterosexual.

A modeling study investigating transmission rates (R_t) by age group found that **people ages 20–49 are likely sustaining COVID-19 transmission** throughout most of the US. The 20–49 age groups were the only ones with transmission rates above 1 through October 2020 ($R_t = 1.3\text{--}1.4$). Targeting prevention interventions, including vaccines, in these age groups is critical for getting this pandemic under control.



HARM REDUCTION TIPS AND RESOURCES

SHOULD I DOUBLE-MASK?

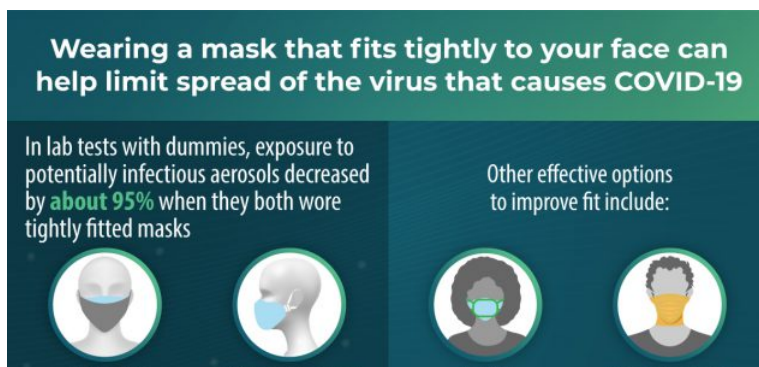
MAXIMIZING MASK PROTECTION

With evidence of the highly infectious U.K. and South African variants circulating in the East Bay, we may be wondering if we should increase our prevention efforts.

Wearing two masks on top of each other (double-masking) and 3+ layered masks can provide more protection so long as you can keep them tight on your face. A new mask study by the CDC demonstrates that tight-fitting multilayered masks and double-masking can decrease exposure to aerosols by up to 95%.

Before you go out, please make sure your mask set up is comfortable and breathable enough to keep on your face! No matter how many layers a mask has, it will not be useful if you can't keep it covering your nose and mouth.

Here are the qualities that make masks more protective, which we recommend



using in indoor public settings (see higher/highest risk settings in our [infographic](#) below):

- **Use tightly-woven fabric or non-woven material**, like in surgical masks.
- **Use multiple layers:**
 - 2 layers provide decent protection and 3 or more layers provide maximal protection.
 - A non-woven layer, such as a disposable surgical-type mask or filter layer can help repel droplets.
 - You can double-mask by using a fitted cloth mask with a disposable surgical-type mask, like in the diagram.
 - Consider adding a face shield and/or goggles in the highest risk settings.
- **Make it fit tight:**
 - Use tight/snug cloth masks.
 - Reduce top gaps by using masks with adjustable nose wires.
 - Reduce gaps in ear loop masks by tying knots near the sides. ([video here](#))
 - Make sure the mask has a tight seal all around, over your nose, sides of your mouth and under your chin.
 - In high risk work settings, get fit-tested for an N95 mask (the gold standard in protective masks).
 - Keep in mind that KN95 masks are not fit-tested and are **less protective** than N95 masks. Treat them like surgical masks.

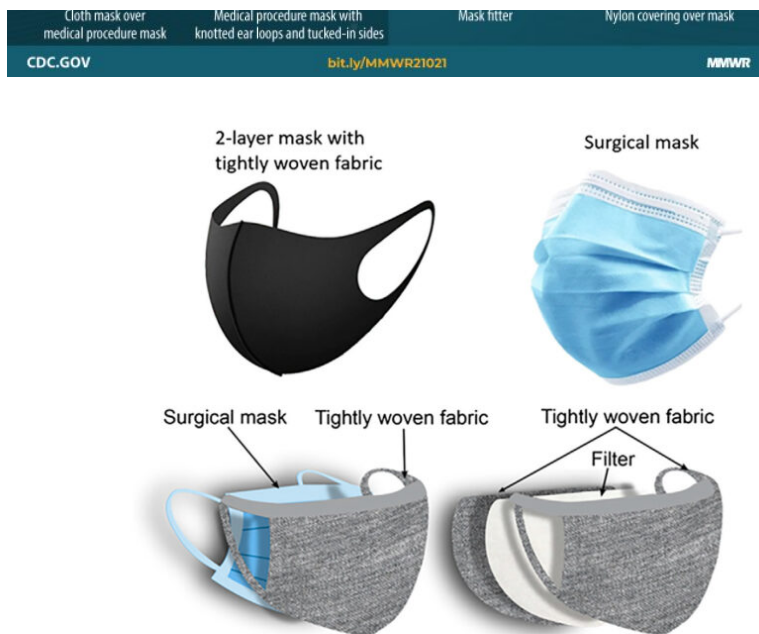


Figure 1. Recommended Masks for Public
Top: basic; bottom: maximal protection.

References: Diagrams from *Maximizing Fit for Cloth and Medical Procedure Masks to Improve Performance and Reduce SARS-CoV-2 Transmission and Exposure, 2021* by the CDC COVID-19 Emergency Response Team and *...Importance of Face Masks for COVID-19* by Monica Gandhi and Linsey C. Marr. Scientific references for these masking tips are located [here](#).



Our COVID-19 prevention and harm reduction infographic is available in English and Spanish! Please download them [here](#) in English and [here](#) in Spanish and share with your clients, coworkers, friends and family! To download printable PDF versions, [click here](#) for the



PDF in English and click [here](#) for the PDF in Spanish.

Free COVID testing sites: Click [here](#) for Alameda County, Contra Costa County and Solano County testing sites.

To slow the spread of COVID-19, we all need to stay home when we can and when we go out:

References: [Bay Area public health guidance on gatherings](#); [summary of evidence and scientific studies](#)

Wear masks and glasses,

- Stay outdoors whenever possible,
- Avoid crowds and maintain at least six feet distance from others,
- Sanitize or wash hands frequently, and
- Stay home when sick.

COVID-19 harm reduction strategies:
Use as many of these as you can!

Strategy	% reduction
1. Vaccination	95% mRNA EUA vaccines
2. Masking	60-95%
3. Staying outdoors	~95% in one case series
4. Distancing	53-88%
5. Eye protection	78%
6. Hand hygiene	28-45%
7. Testing/isolation	33%

Updated 12.23.20 * Data compiled by Sophy S. Wong, MD
Icons by Good Ware, Freepik and Strip on FlatIcon.com
Please see [EBGTZ.org/resources](https://ebgtz.org/resources) for the complete list of sources for this table.

OTHER UPDATES AND OPPORTUNITIES:

Trainings and webinars:

- Join PAETC for *From Jail to Care: Connecting People to Hope During and After Incarceration* on Tuesday, 2/23 at 12:15pm. Register [here](#).
- The 2021 Biomedical HIV Prevention Summit is set to be held virtually on March 30-31. [Registration is open](#) until March 19. Register [here](#).
- Bay Area Regional Health Inequities Initiative (BARHII) is hosting their general membership meeting on Friday 2/19 from 10-12pm. The meeting will be on the topic of "Anti-Black Racism and Housing in America: Where We've Been, What's Next." Join the meeting via [this link](#) (Event Password: JoinBARHII).
- IAS-USA hosted a live webcast last week called "COVID-19 Meets HIV": Variants, Vaccines, Health Disparities, and Other Fast-Evolving Issues?" Recording is now available on demand [here](#).
- Region 9 Prevention through Active Community Engagement Program and partners will host "Stop HIV Together" a virtual Panel Discussion with Black American Community Leaders on Wednesday, February 24 from 11:00 am-12:15 pm. No registration is required. Join via [this link](#). (Meeting number (Access code): 1991459867; Meeting password: mPx4wC3JdJ3)

Our **summary of COVID prevention research** is constantly updated with new studies.

Funding Opportunities:

- The Alameda County Public Health Department Office of HIV Prevention has posted a [Request for Proposals for HIV prevention services](#) in Alameda County. Bidders conferences will be held on

February 18th and the deadline for required letters of intent is February 19 at 5pm. Please contact Steven Gibson at steven.gibson@acgov.org with any questions.

- The California Department of Public Health Office of AIDS has released two requests for applications: Strategic Rapid ART and Project Empowerment. Learn more about the opportunities [here](#).

Job opportunities:

- Partnerships for Trauma Recovery is currently hiring for a **Social Worker**, an **African Communities Counselor**, and a **Director of Client Care**. The position descriptions can be viewed [here](#).
- LifeLong Medical Care is looking for a **HIV Case Manager** at their East Oakland Health Center. The Case Manager will provide comprehensive individualized social services to people living with HIV (PLWH) in Alameda County. Learn more about the position [here](#).
- Bay Area Regional Health Inequities Initiative (BARHII) is looking for a **Communications Officer**, an **Administrative Specialist** and an **Interim Development Director**. Learn more about the positions [here](#).
- Alameda Health Consortium is looking for a **Development and Communications Intern** to assist their Grants/Development and Communications/Advocacy team with grants management, training, video production, data analysis, communications and list management related to our work with policymakers, funders, the media, and community engagement on behalf of our health centers. To apply, please submit a cover letter and a resume to be considered to:
 - mschoenberg@alamedahealthconsortium.org by 2/19/21.
- The Center for Environmental Health is looking for a **Community Health Cases Manager** to work with community-led organizations and help manage and guide our community exposure litigation. Learn more about the position [here](#).
- Alliance for Girls and Betti Ono Art Gallery have collaborated to create *Radical Visions of Safety from Our Home to the Streets*. It is an open call for art to any girl or gender expansive youth who would be interested in sharing their artistic vision of radical safety. Participants who submit their artwork will have the opportunity to win up to \$1,000 for their submission. Artists can submit their artwork to the [Radical Visions of Safety Open Call](#) form. Artwork must be submitted by 11:59 on Feb 28, 2021. The [open call website](#) has more information on submission guidelines and recommendations.



Community resources:

- Roots Community Centers host the People's Health Briefing every Tuesday morning. This week, our steering committee member, Dr. Aisha Mays, Roots Director of Adolescent and School Based Services, reported on *Children, COVID and Schools*. Watch the episode [here](#).
- San Francisco Department of Public Health has released an updated version of the [Tip Sheet for Safer Sex During the COVID-19 Pandemic](#). The resource is also available in [Chinese](#), [Spanish](#) and

Tagalog.

- The CA Office of AIDS' February newsletter is out. Access it [here](#).
- Study: *Researchers Are Starting to Study the COVID-19 Vaccine in Autoimmune and Immunocompromised Patients*

HIV services during COVID-19: Click here for Contra Costa HIV services and see our online directory for Alameda County HIV services.

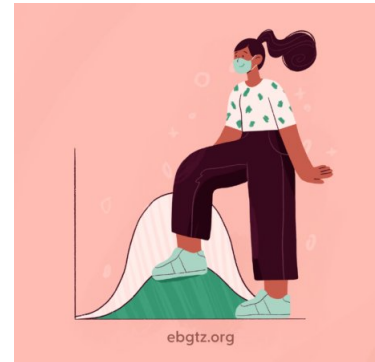
If your organization is in Alameda County and needs COVID-related supplies or staffing, please go to the [Emergency Medical Services website](#) to request PPE and testing supplies and request staffing.

Please follow and share our [Instagram](#), [Facebook](#) and [Twitter](#) accounts.

A note about this webpage: COVID data updates will be posted to this page on Wednesdays in the late afternoon during non-holiday weeks. New studies will be continuously added to our summary of [COVID-19 harm reduction strategies](#). The emailed [HIV+COVID-19 update newsletters](#) are now on a bi-weekly schedule of 1st and 3rd Wednesdays.

Official Alameda County COVID-19 weekly updates are accessible on the [county website](#) and will not longer be posted on this page. You can sign up to receive the Alameda County weekly COVID-19 newsletter by emailing Jamie.Yee@acgov.org.

[CLICK HERE FOR ALAMEDA COUNTY WEEKLY NEWSLETTERS](#)



OPPORTUNITIES TO HELP:

- [California Health Corps](#) – Use this link to register for the California Health Corps which is a State program for trained medical and healthcare workers to sign up and provide availability to assist in the COVID-19 response.
- [Medical Surge Volunteer Sign Up](#) – Use this link to register as a volunteer with the County of Alameda to assist with the COVID-19 response. Medically and non-medically trained volunteers will be needed. [Click here for more information](#).

TOP LINKS:

- **HIV:** [FAQs for people living with HIV \(PLWH\)](#) and [Preguntas Frecuentes in Spanish](#), [Guidance for PLWH \(CDC\)](#), [Guidance for HIV providers \(HIVMA\)](#), [Vaccines for PLWH \(HIVMA\)](#), [UNAIDS infosheet on COVID-19 vaccines and HIV](#)
- **HIV services during COVID-19:** Click here for Contra Costa HIV services and see our online directory for Alameda County HIV services.
- **Key Communities:** [Harm Reduction Coalition](#), [Immigrants Rising](#), [Protecting Immigrant Families: Public Charge](#), [Healthcare for the Homeless](#), [COVID info in Asian languages](#)
- **COVID Vaccines:** [California State](#), [CA vaccine tracker](#), [Alameda County](#), [Contra Costa County](#), [Solano](#)

County

- **COVID exposure alerts:** [CA Notify app](#)
 - **COVID Testing, Food, Shelters:** [Alameda County COVID testing and services](#), [what to do if you test positive or have contact with someone with COVID](#), and [isolation housing](#), [Contra Costa County COVID testing](#)
 - **COVID PPE, staffing or testing supplies:** [Alameda County EMS](#)– request PPE, request staffing or request testing supplies.
 - **Public Health Department Updates:** [Alameda County](#), [Contra Costa County](#), [Solano County](#), [California State](#)
 - **COVID Data:** [Alameda County](#), [Contra Costa County](#), [Solano County](#), [California State](#), [California \(SF Chronicle\)](#), [National/Global \(JHU\)](#), [By Race](#)
 - **DIY Face Coverings and Masks:** [CDC \(easy no-sew\)](#), [Kaiser \(sewn\)](#), [Maker Mask \(sewn, science-based\)](#), [Olson Mask \(sewn\)](#)
-

ALAMEDA COUNTY GUIDANCE:

Click [here](#) for all current approved businesses and activities.

Download links for **Alameda County community or business** guidance on: [Face coverings](#), [social bubbles](#), [childcare and camps for all children](#), [graduations](#), [vehicular gatherings](#), [construction](#), [curbside retail pickups](#), [manufacturing and warehousing](#), [personal services](#), [youth extracurricular](#) and [general outdoor recreation activities](#).

Download links for **Alameda County clinical guidance** on: [COVID-19 testing](#), [antigen testing](#), [isolation orders in 7 languages for all people getting tested](#), [reporting COVID-19 cases](#), [Project Roomkey isolation housing](#), [home health agencies](#), [remdesivir allocations](#), [routine vaccines](#), [reporting pediatric Multisystem Inflammatory Syndrome](#), [resumption of non-urgent medical services](#), [testing in Skilled Nursing Facilities](#) and [COVID-19 vaccinations](#).

If your organization is in Alameda County and needs COVID-related supplies or staffing, please go to the [Emergency Medical Services website](#) to request testing supplies, antigen test kits and/or PPE, and request staffing.

LOOKING FOR COVID-19 TESTING?

- **Alameda County COVID testing sites:** [This webpage](#) includes community-based sites offering free testing for anyone with symptoms, including people without health insurance.
- [Contra Costa County free drive-through or walk-in COVID testing](#)
- [Solano County free testing sites](#)
- Please check the listing for updates and call the testing site before you leave your home/shelter/camp/car to make sure they are open for testing, you are eligible, and register if needed.
- If you don't have a provider and have COVID symptoms: In Alameda County, call Alameda Health System 510-437-8500 for a phone screen and guidance. In Contra Costa County, call 844-729-8410. In Solano County, the county COVID warmline is 707-784-8988.
- If you're having difficulty breathing and unstable, please go to your nearest emergency room.

[← BACK TO UPDATES](#)



**EAST BAY
GETTING
TO ZERO**

**ABOUT
GROUPS
YOUTH
SERVICES
COVID-19**

**RESOURCES
UPDATES
EVENTS
GET INVOLVED
DONATE**



[Privacy Policy](#)

[Site Map](#)

[Site Credits](#)

[Contact Us](#)

[Login](#)