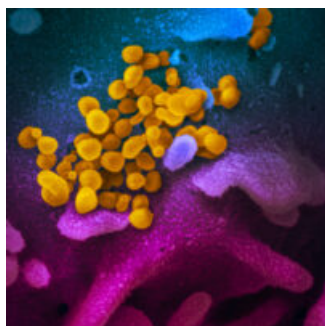


[Home](#) / [COVID-19](#) / [COVID updates](#) / [COVID-19 and HIV updates](#)

COVID-19 AND HIV UPDATES

FEBRUARY 10, 2021

[SIGN UP FOR OUR BIWEEKLY NEWSLETTER HERE](#)



The SARS-CoV-2 virus
(NIAID)

Below are this week's East Bay COVID-19 and HIV updates. This page is usually updated on Wednesday evenings with data and resources gathered from many collaborators in Alameda County, Contra Costa County, Solano County, CA state.

[VACCINES](#)[MASKS](#)[GUIDANCE](#)[RESOURCES & LINKS](#)[ARCHIVES](#)[PDF SUMMARY](#)

Click on these links for [vaccines](#), [masks](#), [guidance on prevention, testing and wellness](#), [resources and links](#), [archived weekly updates](#) and the [weekly PDF summary](#). East Bay HIV service organizations are providing services by phone, video with some in-person visits available.

Jump to:

- [Key updates](#)
- [Vaccine updates](#)
- [Trends in cases and transmission rates](#)
- [Disparities: new data and studies](#)
- [Harm reduction tips: should I double mask?](#)
- [Trainings, funding, job opportunities and other resources](#)
- [Top links, guidance and where to get tested](#)

Join us on Thursday, February 25, 2021 11-12:30 PM for [State of the Pandemic in Alameda County:](#)

COVID-19 Conversations on Vaccines, Variants, and More. There will be a presentation, conversation and ample time for live Q&A. Learn more about the current state of COVID-19 in Alameda County, the vaccine and roll-out, and strategies that will protect your patients, consumers, and community from the virus and

misinformation.

Survey for all health care workers on their pandemic experience with an optional \$100 Amazon gift card raffle: UCSF's Center for AIDS Prevention Studies is calling all health care workers (broadly defined) for a 10-25-minute survey about their experiences during COVID-19. The consent and survey can be accessed [here](#).

EAST BAY COVID-19 UPDATES

COVID-19 daily case and hospitalization rates have decreased over the past month but are still at high levels in the Bay Area. Death rates have begun to decline after record highs. Estimated [transmission rates](#) in the Bay Area have been below 1 (0.72 to 0.82). [Bay Area ICU capacity is up at 21.6%](#) as of February 9.

The South African variant has been identified in Alameda and Santa Clara Counties, Governor Newsom announced at a press conference on February 10. The two cases were diagnosed in January. The case in Santa Clara County had recently traveled internationally and was confirmed to have quarantined after travel. The Alameda County case is still being investigated. The [South African variant](#) is thought to be more transmissible, and the Pfizer and Moderna mRNA vaccines have been found to be less effective against this variant in [lab studies](#) but still effective enough to be protective.

Don't let down your guard! We will need to continue to **wear masks, keep distance and get vaccinated as soon as we can**, especially with more infectious variants in circulation. Please see below for more prevention tips. It's a race against mutants!

Oakland Coliseum will become a mass-vaccination site starting February 16, Governor Newsom and the Biden-Harris administration [announced](#) on February 3. Oakland Coliseum and Cal State LA will be pilot mass vaccination sites co-run by the Federal Emergency Management Agency (FEMA) and the State of California through the Governor's Office of Emergency Services (Cal OES). The two sites were chosen to increase access for communities disproportionately impacted by COVID-19. Registration for vaccine appointments will eventually be available through the state's [MyTurn](#) scheduling system.

In addition to the Coliseum site, mass vaccination sites are planned at the [Berkeley Golden Gate Fields Buchanan parking lot](#), and at the Alameda Fair Grounds.

Vaccinations are available now for health care workers, nursing home residents and elders. Many vaccination sites have opened appointments for people ages 75+ and 65+ though it's been difficult to get appointments due to low supply and high demand. Starting February 8 in Alameda County, a small group of essential workers in education/child care, emergency services and food/agriculture became eligible for vaccines under Phase 1b Tier 1.

Family care givers now qualify for vaccines as health care workers in Alameda County as of February 5. Family care givers must provide an attestation letter that documents that they provide hands-on care for a person with a disabling condition that puts them at risk for severe COVID-19. An attestation letter template will be available on the [Alameda County website](#).

After these groups, the state will shift to prioritization based on age and high-risk medical conditions.

This means CA will no longer prioritize vaccines by occupation after Phase 1b Tier 1. On February 3, the CA Guidelines Workgroup reviewed prioritization of people with disabilities and underlying conditions for a new Phase 1b Tier 2 group. It's still unclear if and how people living with HIV (PLWH) will be prioritized. There is [emerging data](#) that people living with HIV and CD4 counts less than 200 are at greater risk for hospitalizations and death, and state-wide advocates have been asking PLWH to be included in this group.

Providers are encouraged to talk with patients and clients about vaccinations to combat misinformation and address concerns. Communities of color continue to turn to their trusted health providers for counsel, and [providers are changing minds about vaccinations](#). The [ICD-10 code Z71.89 \(other specified counseling\)](#) along with a principal diagnosis code may be used for vaccine counseling done in medical provider visits.

People needing medical care for any condition are still encouraged to seek care as our clinics and hospitals remain open with strict safety protocols to take care of all people.

COMMUNITY VACCINE SPOTLIGHT



Amber Taylor, Case Manager at WORLD, says: "I got the vaccine due to working in the public, with a large number of people who are susceptible to catching the virus. Myself having asthma I am at a greater risk of catching COVID, so getting the vaccine I am protecting myself and the ones I love. I am always around my child, my father who is 65, my grandmother who is 70+, they are all at a greater risk of not recovering fully from this virus, so being around them I need to make sure they are protected at all times."

VACCINE ELIGIBILITY AND ACCESS

As of February 10, Alameda County, Contra Costa County, and Solano County are prioritizing vaccinations for health care workers, people in nursing homes and people over the age of 65.

In Alameda County: starting February 5 family care givers qualify for the vaccine as health care workers so long as they have an attestation letter documenting their care taking role. Starting February 8, a limited number of essential workers in education/child care, emergency services and food/agriculture will be eligible for vaccines under Phase 1b Tier 1. Please see the infographic below.

Vaccine appointments are still very difficult to access due to limited vaccine supplies, a fragmented health care system, and a confusing eligibility system. For example, one medical provider may have enough supply to vaccinate people ages 65+ while another only has enough to vaccinate people ages 75+. In addition, while essential workers in education/child care, food/ag and emergency services are "eligible" in Alameda County, the county has an internal priority sequences to invite sub-groups of these essential workers based on exposure, age,

uninsured status and zip codes at highest risk.

To access vaccines, we recommend the following steps:

1. Check with your medical provider and/or county for when the vaccine is available for your age or occupation group. See links below for notifications and updates in availability.
2. When vaccine is available for your group:
 - a. Check if you can get a vaccine through your medical provider first.
 - b. If you cannot get a vaccine through your health plan or clinic, check if you can get a vaccine through a public (county) vaccination site.

All COVID-19 vaccines should be available at no cost.

Notifications for when vaccine is available for you:

There is no unified notification system, so you may choose to sign up for many different notification systems to stay informed about the full breadth of vaccination opportunities available to you:

- [City of Berkeley notifications](#)
- [Alameda County notifications](#)
- [Solano County notifications](#)
- [California State MyTurn notifications](#)
- You can also find out if your medical provider has a notification system.

Vaccines through medical providers:

- **Kaiser members**
- **Sutter members**
- **Stanford Health members**
- Many **community health centers** are providing vaccine appointments to eligible members. Please contact your provider to find out more.

Vaccines for the public through county vaccination sites:

- **Alameda County COVID-19 vaccine updates and notifications**
 - As of February 10, people ages 65+, health care workers, nursing home residents and a very limited number of essential workers in food/agriculture, education/child care and emergency services are eligible.
 - Notifications will be sent out when vaccines are available for your group from county-supplied sites. Kaiser and Sutter get their own supply, so members have to check availability with them separately.
 - Health care workers need to sign up as “health care providers” to get notifications.
 - City of Berkeley vaccine notifications: [click here to register](#)
- **Contra Costa County COVID-19 vaccine updates and appointments**
 - As of February 10, [appointments](#) are available for health care workers and people ages 65+ at [county vaccination sites](#) or the [Optum Serve site](#).
 - To bring equity-related concerns to Contra Costa County’s attention, [click here](#).

- **Solano County** vaccine updates, notifications and access points
 - As of February 10, health care workers and people ages 75+ are eligible for vaccinations. Please see info on access at the bottom of [this webpage](#).
 - February 12-13: Solano County Fairgrounds in Vallejo will host a mass vaccination site. **Eligible participants can sign up:** Feb. 12 event: <http://bit.ly/sccovax0212>; Feb. 13 event: <http://bit.ly/sccovax0213>.

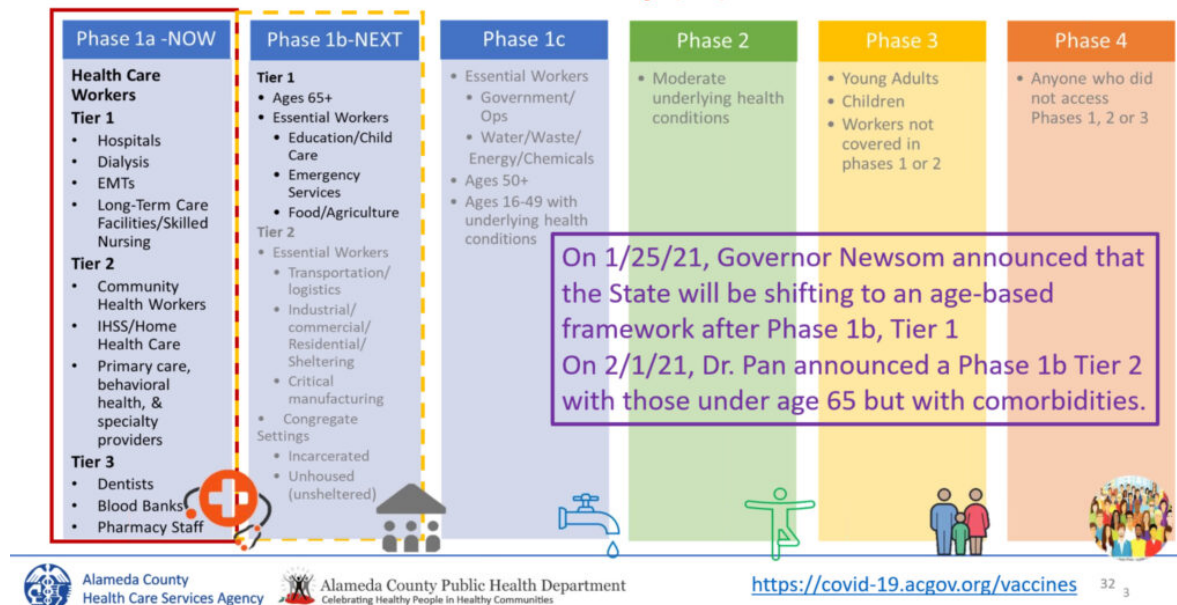
Coming soon! Vaccines for the public at mass vaccination sites:

- **Oakland Coliseum** FEMA site is expected to open starting February 16. Appointments are not available yet as of February 10, so please check back.
- **The Berkeley Golden Gate Fields Buchanan parking lot site** is expected to open in mid-February for people living in northern Alameda County.
- **Alameda Fairgrounds** is also expected to have a small pilot opening during the week of February 15.

Who is eligible for vaccines now?

Bay Area counties are following **CA state guidelines on vaccine prioritization**, which were updated on February 1:

Vaccine Prioritization Framework *as of 1/25/21*



PEOPLE LIVING WITH HIV AND COVID-19 VACCINES

Currently all people living with HIV (PLWH) are recommended to get the COVID-19 vaccine **once eligible** so long as they don't have severe allergic reactions to components of the vaccines. As of February 10, it's unclear if and how people living with HIV will be prioritized in

California as having a medical comorbidity. There is [emerging data](#) that people living with HIV and CD4 counts less than 200 are at greater risk for hospitalizations and death.

The [Moderna vaccine trial](#) included 179 PLWH and the [Pfizer trial](#) included 196 PLWH but data on these sub-groups has not been reported separately yet. There is currently no recommendation to check antibody levels for people living with HIV after completing vaccination. We are not sure yet if commercially available SARS-CoV2 antibody tests such as at Quest and LabCorp check for the spike antibodies generated by the vaccines, but providers and patients may discuss checking for spike IgG antibody levels two or more weeks after the second vaccine dose while we await more data.

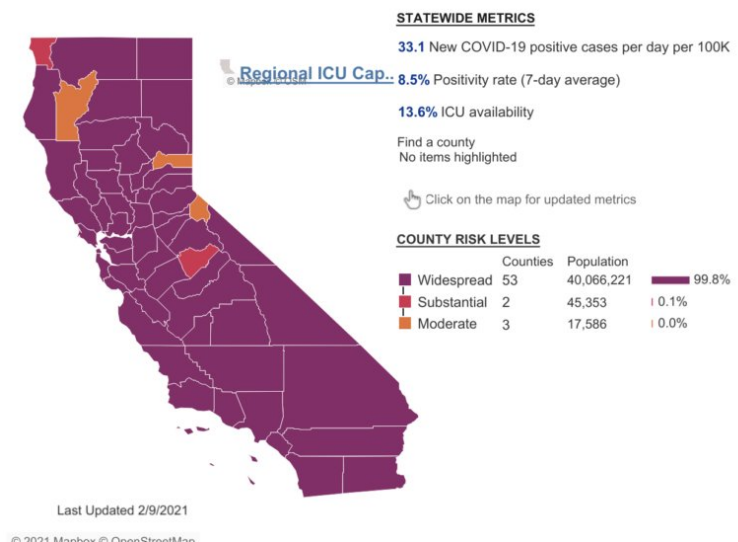
HELP THE VACCINE ROLL-OUT EFFORT!

- **All Alameda County health care providers** are encouraged to [enroll in CalVax](#) to become vaccinators.
- **To volunteer** at a county vaccination site, [please register here](#).

MORE VACCINE RESOURCES

TRENDS IN CASES AND TRANSMISSION RATES

Transmission rates (R_e) continue to be less than 1, which means cases are decreasing. As of February 10, the transmission rates were 0.82 in Alameda County, 0.78 in Contra Costa and 0.72 in Solano County, and 0.79 statewide. Our goal is to support the vaccine roll-out and community measures around masking, distancing, staying outdoors and avoiding gatherings to keep transmission rates less than 1.



ALAMEDA COUNTY AS OF FEBRUARY 10:

- Purple “widespread” tier week 13.
- 20.4 new cases of COVID-19 per day per 100,000 residents (down from 27.5 last week).
- 4.7% test positivity rate countywide (down from 5.2%).
- 7.6% test positivity in the lowest quartile [Healthy Places Index](#) (HPI) census tract (down from 8.2%).
- 0.82 transmission rate on the [Cal-CAT](#) model (up from 0.80).

CONTRA COSTA COUNTY AS OF FEBRUARY 10:

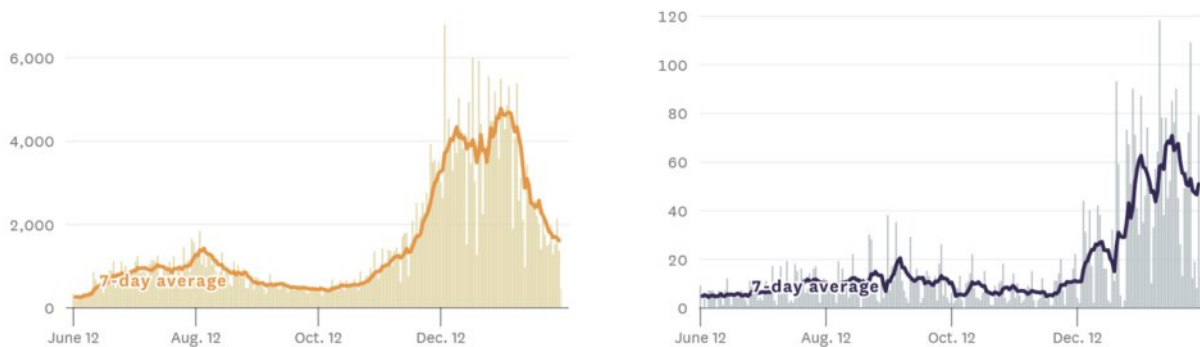
- Purple “widespread” tier week 13.

- 21.7 new cases of COVID-19 per day per 100,000 residents (down from 31.4).
- 5.7% positivity rate (down from 7.0%).
- 8.3% test positivity in the lowest quartile HPI tract (down from 11.5%).
- 0.78 transmission rate (down from 0.79).

SOLANO COUNTY AS OF FEBRUARY 10:

- Purple “widespread” tier week 13.
- 26.4 new cases of COVID-19 per day per 100,000 residents (down from 33.1).
- 6.3% positivity rate (down from 7.5%).
- 8.8% test positivity in the lowest quartile HPI tract (up from 8.6%).
- 0.72 transmission rate (down from 0.81).

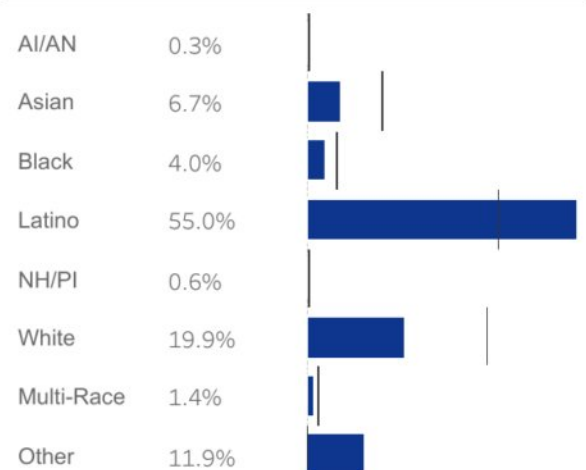
New reported cases and deaths in the Bay Area, by day



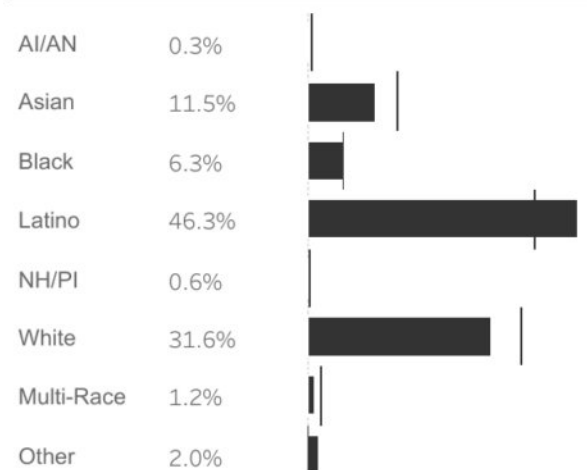
SF Chronicle, 2/10/21: COVID-19 daily cases and deaths in the Bay Area.

DISPARITIES: NEW DATA AND STUDIES

Positive cases by ethnicity

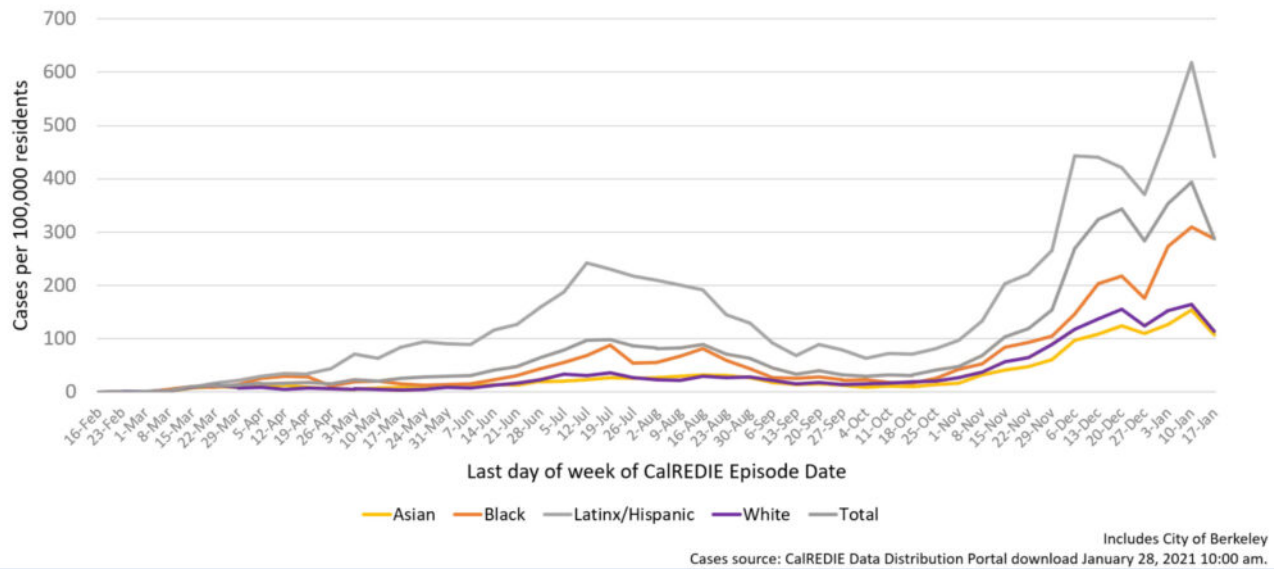


Total deaths by ethnicity



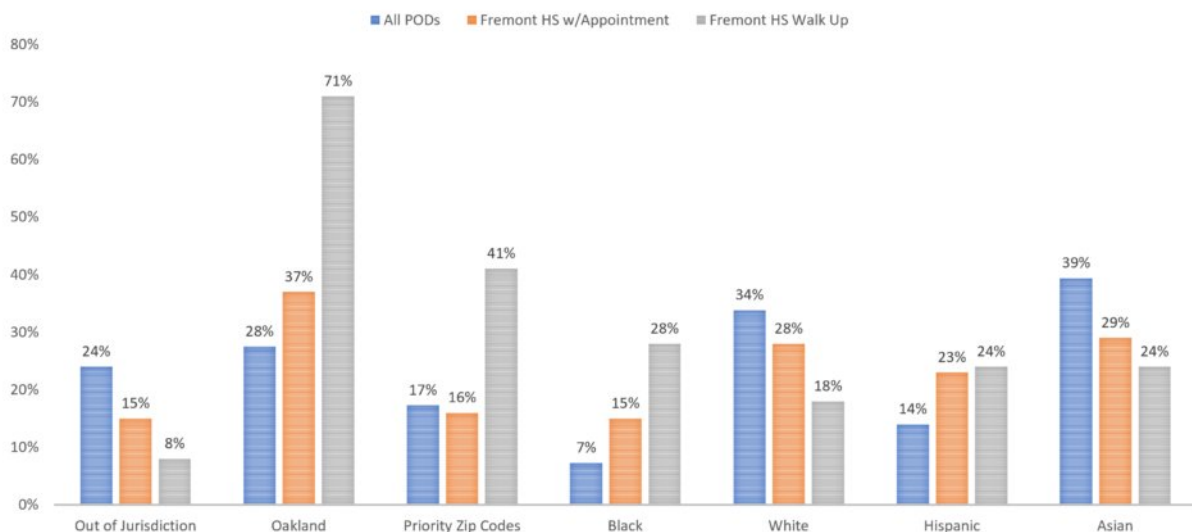
CDPH CA State COVID-19 dashboard 2/10/21: Latinx and Black/African American Californians continue to be disproportionately impacted by COVID-19.

Alameda County COVID-19 weekly case rate



In Alameda County, while case rates are falling from their January peak, Latinx people are still more than 4 times more likely to be diagnosed with COVID-19 than white people. Black/African American residents are nearly 2 times more likely to die from COVID-19 compared to their white neighbors.

FREMONT HIGH SCHOOL POD VS. ALL COUNTY PODS TO DATE



Alameda County vaccination equity data shows that Latinx and Black health care workers are

underrepresented among those who have received vaccinations. However, in early February a vaccination site at Fremont High School in East Oakland demonstrated in the graph above that allowing for walk-up vaccinations increased vaccination rates among Black and Latinx residents (see orange bars for vaccines by appointment and gray bars for vaccines by walk-up). The County will be advocating for more walk-up vaccination opportunities located in the hardest-hit neighborhoods.

Black Americans are getting vaccinated at lower rates than white Americans: Black people have been vaccinated at 2-3 times lower rates compared to white people, including in the first health care workers group. "Access issues and mistrust rooted in structural racism appear to be the major factors leaving Black health care workers behind in the quest to vaccinate the nation." (Kaiser Health News)

A [new study](#) projects that in 2020, **COVID-19 will reduce US life expectancy disproportionately by race/ethnicity**. Life expectancy in the US is estimated to be reduced by 1.13 years overall, with reductions for Black and Latinx people 3 to 4 times that for White people.

A [new UCSF study](#) ranks the **riskiest jobs in California** during the pandemic with food/agricultural workers at highest risk (39% increase in mortality), transportation workers (28% increase) and facilities (27%) and manufacturing workers (23%). Latinx food/agricultural workers experienced a 59% increase in mortality, Black retail workers experienced a 36% increase and Asian health care workers experienced a 40% increase in mortality during the COVID-19 pandemic.

HARM REDUCTION TIPS AND RESOURCES

SHOULD I DOUBLE-MASK?

MAXIMIZING MASK PROTECTION

With evidence of the highly infectious U.K. variant circulating in the East Bay, we may be wondering if we should increase our prevention efforts.

Wearing two masks on top of each other (double-masking) and 3+ layered masks can provide more protection so long as you can keep them tight on your face. No matter how many layers a mask has, it will not be useful if you can't keep it comfortably on and covering your nose and mouth. Before you go out, please make sure your mask is comfortable and breathable enough to keep on your face!

Here are the qualities that make masks more protective, which we recommend using in indoor public settings (see higher/highest risk settings in our [infographic](#)):

- **Use tightly-woven fabric or non-woven material**, like in surgical masks.
- **Use multiple layers:**
 - 2 layers provide decent protection and 3 or more layers provide maximal protection.
 - A non-woven layer, such as a disposable surgical-type mask or filter layer can help repel droplets.



- You can double-mask by using a fitted cloth mask with a disposable surgical-type mask, like in the diagram.
- Consider adding a face shield and/or goggles in the highest risk settings.

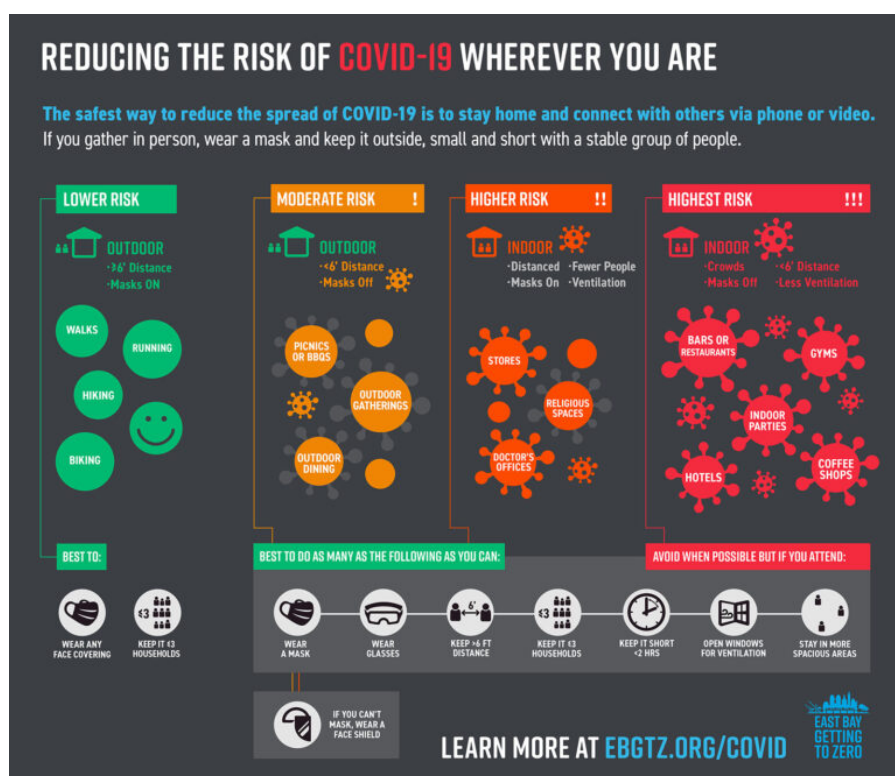


Figure 1. Recommended Masks for Public
Top: basic; bottom: maximal protection.

- **Make it fit tight:**

- Use tight/snug cloth masks.
- Reduce top gaps by using masks with adjustable nose wires.
- Reduce gaps in ear loop masks by tying knots near the sides. ([video here](#))
- Make sure the mask has a tight seal all around, over your nose, sides of your mouth and under your chin.
- In high risk work settings, get fit-tested for an N95 mask (the gold standard in protective masks).
- Keep in mind that KN95 masks are not fit-tested and are [less protective](#) than N95 masks. Treat them like surgical masks.

References: The mask diagram (“Figure 1”) is from “Uniting Infectious Disease and Physical Science Principles on the Importance of Face Masks for COVID-19,” by Dr. Monica Gandhi and Linsey C. Marr. Scientific references for these masking tips are located [here](#). As far as we know, there are no peer-reviewed studies on protection from double-masking; evidence from peer-reviewed studies show that the masks with multiple layers and tight fits provide the most protection for both the wearer and others.



Our COVID-19 prevention and harm reduction infographic is available in English and Spanish! Please download them here in English and here in Spanish and share with your clients, coworkers, friends and family! To download printable PDF versions, [click here for the PDF in English](#) and [click here for the PDF in Spanish](#).

Free COVID testing sites: [Click here for Alameda County](#), [Contra Costa County](#) and [Solano County](#) testing sites.

To slow the spread of COVID-19, we all need to stay home when we can and when we go out:

References: [Bay Area public health guidance on gatherings](#); [summary of evidence and scientific studies](#)

Wear masks and glasses,

COVID-19 harm reduction strategies:

- Stay outdoors whenever possible,
- Avoid crowds and maintain at least six feet distance from others,
- Sanitize or wash hands frequently, and
- Stay home when sick.

OTHER UPDATES AND OPPORTUNITIES:

Trainings and webinars:

- **HIV Grand Rounds with Dr. Stephanie Cohen**, Medical Director of the San Francisco City Clinic and Assistant Professor of Medicine at UCSF, for the **'Sex (and STIs) in the time of COVID'** seminar. This online webinar will be held on Wednesday, February 10th, at 12 PM PST via Zoom.
- Join **Dr. Sophy S. Wong** of East Bay Getting To Zero and HealthPAC on Thursday, February 25, 2021 11-12:30 PM for **State of the Pandemic in Alameda County: COVID-19 Conversations on Vaccines, Variants, and More**. There will be a presentation, conversation and ample time for live Q&A. Learn more about the current state of COVID-19 in Alameda County, the vaccine and roll-out, and strategies that will protect your patients, consumers, and community from the virus and misinformation.

Funding Opportunities:

- Youth-serving organizations: There is a new funding opportunity through ETR's Youth Engagement Network. The Youth Engagement Network (YEN) is a 3-year project funded by the Office of Population Affairs that aims to strengthen youth engagement in sexual and reproductive health programs, services and systems change efforts. They are currently seeking to fund organizations to refine and evaluate existing youth engagement interventions. Proposals are due Monday, February 22, 2021. Learn more about the opportunity [here](#).
- The Centers for Disease Control and Prevention (CDC) published the Notice of Funding Opportunity (NOFO) PS21-2104: Partnering and Communicating Together. The NOFO seeks to engage strategic partners from across a variety of sectors to support the dissemination of messages and resources from the *Let's Stop HIV Together* campaign to the populations and communities most impacted by HIV. The [Partnering and Communicating Together funding opportunity](#) is part of CDC's efforts to increase HIV awareness, testing, prevention, and treatment under the *Ending the HIV Epidemic* (EHE) initiative.

Job opportunities:

- [Urban Leaders Fellowship](#) is a full-time fellowship where fellows spend half of their time working on impactful policy proposals for an elected or appointed official, and the other half of their time working at a community-based company or organization equally committed to social justice and positive impact. For the ULF Oakland site specifically, fellows will be working out of the City of Oakland's Director of Education and focusing on policy initiatives related to advancing education

COVID-19 Prevention Research Strategies

Use as many of these as you can!

Strategy	% reduction
1. Vaccination	95% mRNA EUA vaccines
2. Masking	60-95%
3. Staying outdoors	~95% in one case series
4. Distancing	53-88%
5. Eye protection	78%
6. Hand hygiene	28-45%
7. Testing/isolation	33%

Updated 12.23.20 * Data compiled by Sophy S. Wong, MD
Icons by Good Ware, Freepik and Srip on Flaticon.com
Please see [EBGTZ.org/resources](https://ebgtz.org/resources) for the complete list of sources for this table.

Our **summary of COVID prevention research** is constantly updated with new studies.

equity in the Oakland community. Deadlines for the application: February 6th and March 20th. Early applications are encouraged as slots fill up quickly. The dates of the program will be around June 7-July 23.

- The Praxis Project is accepting applications for a paid summer [Health Justice Internship](#). The Health Justice Internship is a great opportunity to engage in health justice policy, public health training, organizational capacity building, and field organizing. This is a remote position, and the pay is \$19-21/hour depending on experience.

California Department of Public Health jobs:

- The Office of Health Equity within the California Department of Public Health provides a key leadership role to reduce health and mental health disparities experienced by vulnerable communities in California. They have an [Associate Governmental Program Analyst](#) position open in their Richmond office.
- The STD Control Branch is recruiting to fill a [Project Policy Analyst III, Clinical Services Coordinator](#), position. The Clinical Services Coordinator will provide technical assistance (TA), capacity-building assistance, and consultation to local health jurisdictions (LHJs), STD and sexual health clinics (and other clinics that provide a substantial number of STD and sexual health services), and other relevant stakeholders.

Community resources:

- Covered California announced that effective Feb. 1, anyone uninsured and eligible to enroll in health care coverage through Covered California can sign up through May 15. Sign up for Covered California [here](#).
 - As a reminder, people with HIV with income between 138% and 500% of MAGI FPL can purchase insurance via Covered CA and enroll in [ADAP](#) and [OA-HIPP](#) to have medication co-pays and insurance premiums paid for by the State of CA Office of AIDS.

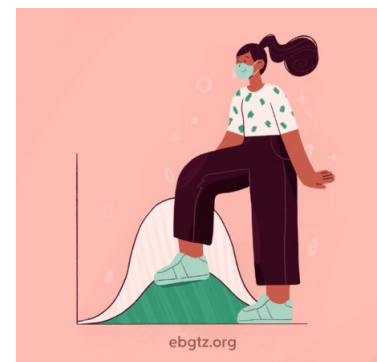
HIV services during COVID-19: [Click here for Contra Costa HIV services](#) and see our [online directory for Alameda County HIV services](#).

If your organization is in Alameda County and needs COVID-related supplies or staffing, please go to the [Emergency Medical Services website](#) to [request PPE and testing supplies](#) and [request staffing](#).

Please follow and share our [Instagram](#), [Facebook](#) and [Twitter](#) accounts.

A note about this webpage: COVID data updates will be posted to this page on Wednesdays in the late afternoon during non-holiday weeks. New studies will be continuously added to our summary of [COVID-19 harm reduction strategies](#). The emailed [HIV+COVID-19 update newsletters](#) are now on a bi-weekly schedule of 1st and 3rd Wednesdays.

Official Alameda County COVID-19 weekly updates are accessible on the [county website](#) and will not



longer be posted on this page. You can sign up to receive the Alameda County weekly COVID-19 newsletter by emailing Jamie.Yee@acgov.org.

[CLICK HERE FOR ALAMEDA COUNTY WEEKLY NEWSLETTERS](#)

OPPORTUNITIES TO HELP:

- [California Health Corps](#) – Use this link to register for the California Health Corps which is a State program for trained medical and healthcare workers to sign up and provide availability to assist in the COVID-19 response.
- [Medical Surge Volunteer Sign Up](#) – Use this link to register as a volunteer with the County of Alameda to assist with the COVID-19 response. Medically and non-medically trained volunteers will be needed. [Click here for more information.](#)

TOP LINKS:

- **HIV:** [FAQs for people living with HIV \(PLWH\) and Preguntas Frecuentes in Spanish](#), [Guidance for PLWH \(CDC\)](#), [Guidance for HIV providers](#), [UNAIDS infosheet on COVID-19 vaccines and HIV](#)
- **HIV services during COVID-19:** [Click here for Contra Costa HIV services](#) and [see our online directory for Alameda County HIV services.](#)
- **Key Communities:** [Harm Reduction Coalition](#), [Immigrants Rising](#), [Protecting Immigrant Families: Public Charge](#), [Healthcare for the Homeless](#)
- **COVID Vaccines:** [California State](#), [CA vaccine tracker](#), [Alameda County](#), [Contra Costa County](#), [Solano County](#)
- **COVID exposure alerts:** [CA Notify app](#)
- **COVID Testing, Food, Shelters:** [Alameda County COVID testing and services](#), [what to do if you test positive or have contact with someone with COVID](#), [and isolation housing](#), [Contra Costa County COVID testing](#)
- **COVID PPE, staffing or testing supplies:** [Alameda County EMS– request PPE](#), [request staffing or request testing supplies.](#)
- **Public Health Department Updates:** [Alameda County](#), [Contra Costa County](#), [Solano County](#), [California State](#)
- **COVID Data:** [Alameda County](#), [Contra Costa County](#), [Solano County](#), [California State](#), [California \(SF Chronicle\)](#), [National/Global \(JHU\)](#), [By Race](#)
- **DIY Face Coverings and Masks:** [CDC \(easy no-sew\)](#), [Kaiser \(sewn\)](#), [Maker Mask \(sewn, science-based\)](#), [Olson Mask \(sewn\)](#)

ALAMEDA COUNTY GUIDANCE:

[Click here for all current approved businesses and activities.](#)

Download links for **Alameda County community or business** guidance on: [Face coverings](#), [social bubbles](#), [childcare and camps for all children](#), [graduations](#), [vehicular gatherings](#), [construction](#), [curbside retail pickups](#), [manufacturing and warehousing](#), [personal services](#), [youth extracurricular](#) and [general outdoor recreation activities.](#)

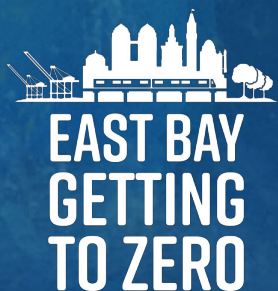
Download links for **Alameda County clinical guidance** on: COVID-19 testing, antigen testing, isolation orders in 7 languages for all people getting tested, reporting COVID-19 cases, Project Roomkey isolation housing, home health agencies, remdesivir allocations, routine vaccines, reporting pediatric Multisystem Inflammatory Syndrome, resumption of non-urgent medical services, testing in Skilled Nursing Facilities and COVID-19 vaccinations.

If your organization is in Alameda County and needs COVID-related supplies or staffing, please go to the Emergency Medical Services website to request testing supplies, antigen test kits and/or PPE, and request staffing.

LOOKING FOR COVID-19 TESTING?

- [Alameda County COVID testing sites](#): This webpage includes community-based sites offering free testing for anyone with symptoms, including people without health insurance.
- [Contra Costa County free drive-through or walk-in COVID testing](#)
- [Solano County free testing sites](#)
- Please check the listing for updates and call the testing site before you leave your home/shelter/camp/car to make sure they are open for testing, you are eligible, and register if needed.
- If you don't have a provider and have COVID symptoms: In Alameda County, call Alameda Health System 510-437-8500 for a phone screen and guidance. In Contra Costa County, call 844-729-8410. In Solano County, the county COVID warmline is 707-784-8988.
- If you're having difficulty breathing and unstable, please go to your nearest emergency room.

[← BACK TO UPDATES](#)



ABOUT
GROUPS
YOUTH
SERVICES
COVID-19

RESOURCES
UPDATES
EVENTS
GET INVOLVED
DONATE



[Privacy Policy](#)

[Site Map](#)

[Site Credits](#)

[Contact Us](#)

[Login](#)