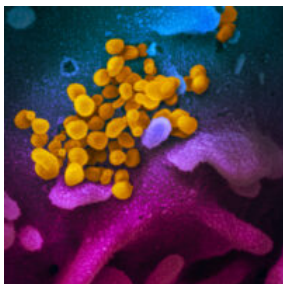


[Home](#) / [COVID-19](#) / [COVID updates](#) / [COVID-19 and HIV updates](#)

## COVID-19 AND HIV UPDATES

DECEMBER 2, 2020



The SARS-CoV-2 virus  
(NIAID)

We are working together to slow the spread of the novel coronavirus 2019 (COVID-19). Below are this week's East Bay COVID-19 and HIV updates. This page is usually updated on Wednesday evenings with data and resources gathered from many collaborators in Alameda County, Contra Costa County, Solano County, CA state.

MASKS

GUIDANCE

RESOURCES & LINKS

ARCHIVES

PDF SUMMARY

Click on these links for masks and face

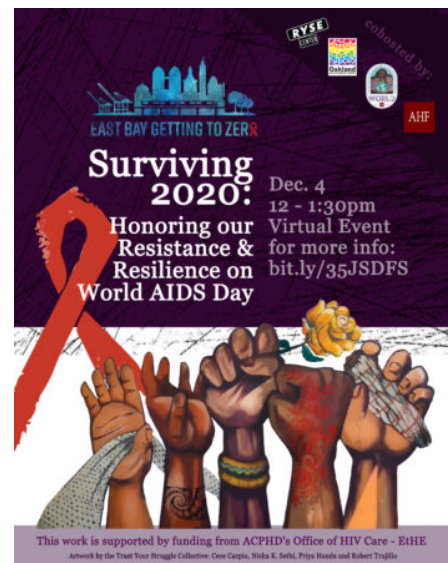
coverings, guidance on prevention, testing and wellness, resources and links, archived weekly updates and the weekly PDF summary. East Bay HIV service organizations are providing services by phone, video with some in-person visits available.

## KEY UPDATES FOR THIS WEEK:

Please join us on Friday, December 4th from 12-1:30 p.m. for a World AIDS Day **commemoration event** and a presentation of our network's draft 5-year strategic plan. This event is titled 'Surviving 2020: Honoring our Resistance & Resilience on World AIDS Day.' The event is a collaboration between East Bay Getting to Zero, Oakland LGBTQ Center, RYSE Youth Center and WORLD. There will be performances from Bay Area artists, giveaways and more. Download the [program here](#). Please register for the event [here](#).

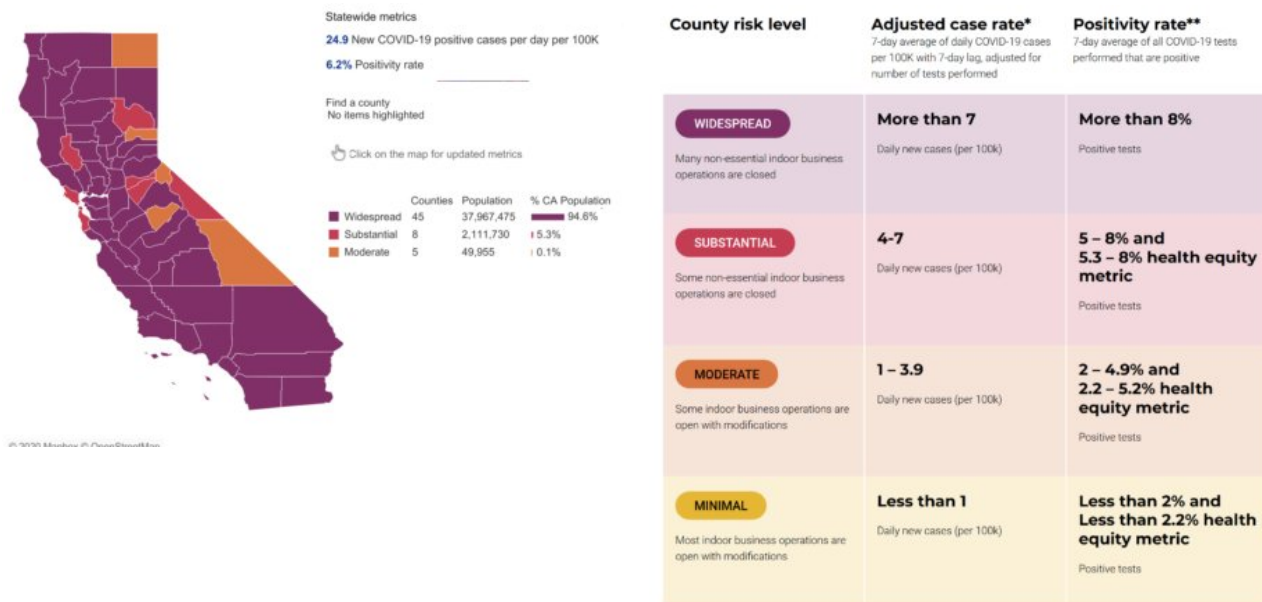
The **East Bay HIV strategic plan** first draft is now ready for reading and feedback! Please [click here](#) to read, download and share feedback and questions on the plan. Please see all [updates on the workshops and processes](#) [here](#).

Download the bilingual notes from the Spanish language workshop [here](#) and slides [here](#). Puede descargar el resumen de la sesión [aquí](#) y la presentación [aquí](#).



## EAST BAY COVID-19 UPDATES

Over the past month COVID-19 cases, hospitalizations and transmission rates across the East Bay have risen rapidly. California case rates have nearly quadrupled in the past month, the fastest and most alarming increase in cases since the beginning of the pandemic. We can still slow down this surge by redoubling our efforts now to **wear masks, stay home or outdoors and avoid crowds**.



Alameda, Contra Costa County and Solano Counties all remain in the highest purple tier (for “widespread” risk) along with 99% of all of California in the statewide [Blueprint to Safer Reopening](#). [Alameda](#), [Contra Costa](#) and [Solano](#) Counties have all rolled back reopenings as per [state requirements](#).

**Current estimated transmission rates (Re)** are 1.24 in Alameda County, 1.17 in Contra Costa and 1.25 in Solano County, compared to 1.12 statewide. Our goal is to support community measures around masking, staying outdoors and testing to get transmission rates back down to less than 1.

### ALAMEDA COUNTY:

- Purple “widespread” tier week 3.
- **16.7 new cases** of COVID-19 per day per 100,000 residents (up from 9.1 last week for the unadjusted new case rate).
- **3.6%** test positivity rate countywide (up from 2.5% last week).
- Test positivity in the lowest quartile [Healthy Places Index](#) (HPI) census tract has not been updated.
- **29,865 cumulative cases** and 514 deaths.
- **187 hospitalized patients** (up from 89 last week; highest was 213 on 7/28), including 57 ICU patients (up from 24 last week; highest was 73 on 8/20).
- **1.24 transmission rate** on the [Cal-CAT](#) model (up from 1.06).

### CONTRA COSTA COUNTY:

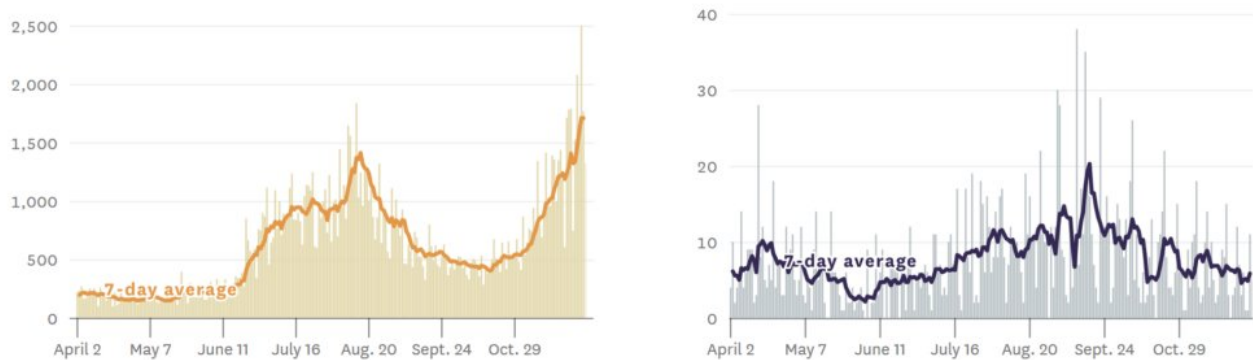
- Purple “widespread” tier week 3.
- **17.9 new cases** of COVID-19 per day per 100,000 residents (up from 11.4).
- **4.1%** positivity rate (up from 3.7%).
- Test positivity in the lowest quartile HPI tract has not been updated.
- **1.17 transmission rate** (up from 1.13).

### SOLANO COUNTY:

- Purple “widespread” tier week 3.
- **22.4 new cases** of COVID-19 per day per 100,000 residents (up from 15.2).

- 6.8% positivity rate (up from 5.5%).
- Test positivity in the lowest quartile HPI tract has not been updated.
- 1.25 transmission rate (up from 1.10).

### New reported cases and deaths in the Bay Area, by day



Bay Area COVID-19 cases and deaths from the [SF Chronicle](#) as of 12/2/20

## PROMISING COVID-19 VACCINE NEWS

**New data from Moderna's COVID-19 vaccine** showed that it was 100% effective at preventing severe disease from the coronavirus. No severe cases occurred in the vaccinated group while 30 severe cases occurred in the placebo group. Moderna applied to the FDA for Emergency Use Authorization (EUA) on November 30 and is expected to go through final FDA review on December 17.

**Last week AstraZeneca and the University of Oxford announced** that their inexpensive (\$3-4), easy-to-produce adenovirus-vector vaccine (AZD1222) appears effective in early analysis of data from late-stage clinical trials. Their press release reports: "One dosing regimen (n=2,741) showed vaccine efficacy of 90% when AZD1222 was given as a half dose, followed by a full dose at least one month apart, and another dosing regimen (n=8,895) showed 62% efficacy when given as two full doses at least one month apart. The combined analysis from both dosing regimens (n=11,636) resulted in an average efficacy of 70%. All results were statistically significant ( $p \leq 0.0001$ ). There has been [confusion](#) over a previous manufacturing mistake with the half-dose regimen, but in the end the vaccine has demonstrated that it works.

**The Pfizer vaccine** is expected to get EUA approval in mid-December, and is ready to ship ~20 million doses to states by the end of this year, which will then be divided up to send to county public health departments and large acute hospital systems.

### Vaccines will arrive for acute care health workers in mid-December:

**Alameda County** is expected to receive about 14,000 doses of the Pfizer vaccine in mid-December for distribution to Tier-1a priority groups accordingly to CDPH: "Persons at risk of exposure to SARS-CoV-2 through their work in any role in direct health care or long-term care settings."

California has determined distribution priority groups for the limited doses that will be coming in December 2020 and early 2021 (mostly acute hospital and long-term care workers). Current estimates are that there will be enough vaccine doses by the summer and fall of 2021 for most people to get vaccinated, with a goal to reach 70% or more vaccination rates by late 2021 to achieve population-level immunity and end this pandemic.

### The NIH AstraZeneca COVID Vaccine Clinical trial is currently enrolling in Oakland!

- The Phase III study is looking at safety and efficiency of AstraZeneca investigational vaccine for prevention of COVID-

19 in adults. In this study, participants will be randomly assigned (by chance) to receive 2 injections of either the investigational vaccine or placebo (4 weeks apart). Participants are reimbursed up to \$100 dollars per visit.

- If interested, please contact Study Coordinator: Ankita Bhalla @ [bhallaA@sutterhealth.org](mailto:bhallaA@sutterhealth.org) or call/text: (510) 295-7090 or (510) 292-3714.

## THE NATIONAL HIV STRATEGIC PLAN IS OUT FOR REVIEW

The Department of Health and Human Services' (HHS) Office of Infectious Disease and HIV/AIDS Policy (OIDP) in the Office of the Assistant Secretary for Health (OASH) announces the draft **HIV National Strategic Plan: A Roadmap to End the HIV Epidemic (2021-2025)** available for public comment. You can view a draft of the HIV National Strategic Plan [here](#). All comments must be received by 5:00 PM ET (2:00 PM PT) on Monday, December 14, 2020. Please send your comments to [HIVPlanComments@hhs.gov](mailto:HIVPlanComments@hhs.gov)

## NEW HIV AND COVID-19 GUIDELINES AND STUDIES

**People living with HIV experiencing unstable housing:** A study by the POP-UP program at SF's Ward 86 shows that people living with HIV experiencing unstable housing and viremia benefitted from a personal relationship with a provider and drop-in services. Participants were willing to trade significant financial gain and more resource-intensive services for the personal relationship and drop-in access.

**Missed Opportunities for HIV Detection and Prevention:** A large U.S. study shows that few women with gonorrhea or syphilis were tested for HIV, and none were prescribed PrEP.

**A UK COVID-19 study of 545 asymptomatic healthcare workers** showed 2.4% PCR positivity rate and 24% antibody positivity with highest antibody rates among housekeeping (35%), acute medicine (33%) and gen internal medicine (30%) with lower rates for ICU workers (15%). People of color were twice as likely to be antibody positive.

**The impact of cold and dry weather on COVID transmission:** A study of meteorological conditions in the US found that cold and dry weather was moderately associated with increased COVID-19 transmission, with humidity playing a larger role than temp.

**A controversial Danish mask study** compared a group of people recommended to wear masks compared to a group of people not recommend masks reported that there was no difference in COVID-19 outcomes and is now being exploited by anti-masking media. However, on closer analysis of their data and removing the problematic antibody data, the study actually found that in the mask group, there was a 0.2% PCR+ rate vs. a 0.6% PCR+ rate in the control group, suggesting a 2/3 reduction in PCR+ for those recommended masks.

**Covered California released new COVID-19 survey data** last week that showed the impact the COVID-19 pandemic is having on the health, lives, finances and concerns of Californians. Findings include: COVID-19 has affected virtually all Californians (96%) with a majority (52%) saying the pandemic has affected their lives significantly. The rates of those who say the pandemic has affected their lives significantly are much higher for the Latino population (58%), compared to 49% among whites, 44% among African Americans and 49% among Asian-Americans. Californians at the lowest end of the income spectrum were most likely to have suffered financially.






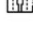
Our **summary of COVID prevention research** is constantly updated with new studies.

**Free COVID testing sites:** Click [here](#) for Alameda County, Contra Costa County and Solano County testing sites.

**To slow the COVID-19 surge, we all need to:**

- Wear masks when outside our homes,
- Stay outdoors whenever possible,
- Avoid crowds and maintain at least six feet distance from others,
- Sanitize or wash hands frequently, and

### COVID-19 harm reduction strategies: Use as many of these as you can!

Strategy	% reduction
 1. Masking	60-95%
 2. Distancing	53-88%
 3. Eye protection	78%
 4. Stay outdoors	~95% in one case series
 5. Hand hygiene	28-45%
 6. Testing/isolation	33%

Updated 8.17.20 \* Data compiled by Sophia S. Wong, MD  
Icons by Good Ware, Freepik and Srip on Flaticon.com  
Please see [EBGitz.org/resources](https://ebgitz.org/resources) for the complete list of sources for this table.

- Stay home when sick.

---

## OTHER UPDATES AND OPPORTUNITIES:

### Web events:

- **The Drug Policy Alliance and William C. Velasquez Institute** will be hosting an online policy discussion about drug decriminalization titled It's Time for the U.S. to Decriminalize Drug Use and Possession. It will take place on 12/3 at 6pm. Learn more and register [here](#).
- **Trucha/La Clinica will be hosting their World AIDS Day Posada** on 12/11 at 5pm. Register [here](#).
- **Riverside University Health System and the Pacific AIDS Education and Training Center (PAETC) are hosting a live webinar on PrEP** for Prescribing Clinicians on December 8<sup>th</sup>, 2020 from 12:00 – 1:30 pm. Register [here](#).
- **Spotlight Trust** is hosting part 2 of their 2-part series on Understanding and Addressing Medical Mistrust on Monday, December 7, 12-1:30pm. Learn more and register [here](#).
- **EHE Regional Learning Collaborative** is hosting their third session focused on At-Home HIV Testing on Tuesday, December 15<sup>th</sup>, 2020 from 10-11:30 a.m. Learn more and register [here](#).

### Other opportunities and resources:

- The Alameda County Public Health Department Office of HIV Care launched the County's first-ever **HIV Care smartphone App** called East Bay CARES. Learn more about the app [here](#).
- The Federal Register has published a notice to invite public comment on the **draft HIV National Strategic Plan**. Comments must be received by 2pm on 12/14. Comments can be sent to [HIVPlanComments@hhs.gov](mailto:HIVPlanComments@hhs.gov)
- **The Frontline Workers Counseling Project (FWCP)**, formerly called the COVID-19 Pro Bono Counseling Project, is an initiative that helps connect frontline workers with free, confidential psychotherapy and counseling. The project is now open to frontline and essential workers in all Bay Area counties. Learn more about the service [here](#).

### Job opportunities:

- **Oakland Community Land Trust** currently has two full-time staff positions open: Project Manager and Stewardship Coordinator. Learn more and apply [here](#).
- **Costa County Employment & Human Services Department (EHSD)** is hiring for a Racial Equity Building and Technical Assistance Consultant. Learn more about the position [here](#).

---

**HIV services during COVID-19:** [Click here for Contra Costa HIV services](#) and [see our online directory for Alameda County HIV services](#).

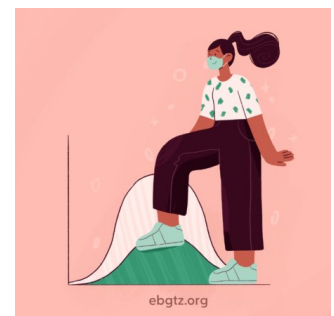
If your organization is in Alameda County and needs COVID-related supplies or staffing, please go to the [Emergency Medical Services website](#) to request PPE and testing supplies and [request staffing](#).

Please follow and share our [Instagram](#), [Facebook](#) and [Twitter](#) accounts.

---

**A note about this webpage:** COVID data updates will be posted to this page on Wednesdays in the late afternoon during non-holiday weeks. New studies will be continuously added to our summary of [COVID-19 harm reduction strategies](#). The emailed [HIV+COVID-19 update newsletters](#) are now on a bi-weekly schedule of 1<sup>st</sup> and 3<sup>rd</sup> Wednesdays.

**Official Alameda County COVID-19 weekly updates are accessible on the [county website](#) and will not longer be posted on this page.** You can sign up to receive the Alameda County weekly COVID-19 newsletter by emailing [Jamie.Yee@acgov.org](mailto:Jamie.Yee@acgov.org).



[CLICK HERE FOR ALAMEDA COUNTY WEEKLY NEWSLETTERS](#)



---

## OPPORTUNITIES TO HELP:

- [California Health Corps](#) – Use this link to register for the California Health Corps which is a State program for trained medical and healthcare workers to sign up and provide availability to assist in the COVID-19 response.
- [Medical Surge Volunteer Sign Up](#) – Use this link to register as a volunteer with the County of Alameda to assist with the COVID-19 response. Medically and non-medically trained volunteers will be needed. [Click here for more information.](#)

---

## TOP LINKS:

- **HIV:** [FAQs for people living with HIV \(PLWH\) and Preguntas Frecuentes in Spanish, Guidance for PLWH \(CDC\), Guidance for HIV providers](#)
- **HIV services during COVID-19:** [Click here for Contra Costa HIV services and see our online directory for Alameda County HIV services.](#)
- **Key Communities:** [Harm Reduction Coalition, Immigrants Rising, Protecting Immigrant Families: Public Charge, Healthcare for the Homeless](#)
- **COVID Testing, Food, Shelters:** [Alameda County COVID testing and services, what to do if you test positive or have contact with someone with COVID, and isolation housing, Contra Costa County COVID testing](#)
- **COVID PPE, staffing or testing supplies:** [Alameda County EMS– request PPE, request staffing or request testing supplies.](#)
- **Public Health Department Updates:** [Alameda County, Contra Costa County, Solano County, California State](#)
- **COVID Data:** [Alameda County, Contra Costa County, Solano County, California State, California \(SF Chronicle\), National/Global \(JHU\), By Race](#)
- **DIY Face Coverings and Masks:** [CDC \(easy no-sew\), Kaiser \(sewn\), Maker Mask \(sewn, science-based\), Olson Mask \(sewn\)](#)

---

## ALAMEDA COUNTY GUIDANCE:

**Click here for all current approved businesses and activities.**

Download links for **Alameda County community or business** guidance on: Face coverings, social bubbles, childcare and camps for all children, graduations, vehicular gatherings, construction, curbside retail pickups, manufacturing and warehousing, personal services, youth extracurricular and general outdoor recreation activities.

Download links for **Alameda County clinical guidance** on: COVID-19 testing, antigen testing, isolation orders in 7 languages for all people getting tested, reporting COVID-19 cases, Project Roomkey isolation housing, home health agencies, remdesivir allocations, routine vaccines, reporting pediatric Multisystem Inflammatory Syndrome, resumption of non-urgent medical services, and testing in Skilled Nursing Facilities.

**If your organization is in Alameda County and needs COVID-related supplies or staffing**, please go to the [Emergency Medical Services](#) website to request testing supplies, antigen test kits and/or PPE, and request staffing.

---

## LOOKING FOR COVID-19 TESTING?

- [Alameda County COVID testing sites:](#) This webpage includes community-based sites offering free testing for anyone with symptoms, including people without health insurance.
- [Contra Costa County free drive-through or walk-in COVID testing](#)
- [Solano County free testing sites](#)
- Please check the listing for updates and call the testing site before you leave your home/shelter/camp/car to make sure they are open for testing, you are eligible, and register if needed.
- If you don't have a provider and have COVID symptoms: In Alameda County, call Alameda Health System 510-437-8500 for a phone screen and guidance. In Contra Costa County, call 844-729-8410. In Solano County, the county COVID

warmline is 707-784-8988.

- If you're having difficulty breathing and unstable, please go to your nearest emergency room.

[← BACK TO UPDATES](#)



**EAST BAY  
GETTING  
TO ZERO**

**ABOUT  
GROUPS  
YOUTH  
SERVICES  
COVID-19**

**RESOURCES  
UPDATES  
EVENTS  
GET INVOLVED  
DONATE**



[Privacy Policy](#) [Site Map](#) [Site Credits](#) [Contact Us](#) [Login](#)