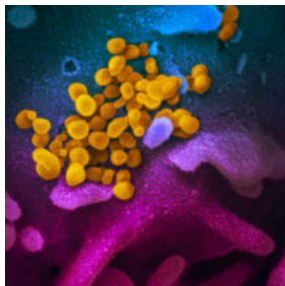


[Home](#) / [COVID-19](#) / [COVID updates](#) / **COVID-19 updates**

COVID-19 UPDATES

SEPTEMBER 23, 2020



The SARS-CoV-2 virus
(NIAID)

We are working together to slow the spread of the novel coronavirus 2019 (COVID-19). Below are this week's East Bay COVID-19 and HIV updates. This page is usually updated on Wednesday evenings by [Sophy S. Wong, MD](#) with data and resources gathered from many collaborators in [Alameda County](#), [Contra Costa County](#), [Solano County](#), [CA state](#).

[MASKS](#)
[GUIDANCE](#)
[RESOURCES & LINKS](#)
[ARCHIVES](#)
[PDF SUMMARY](#)

Click on these links for [masks and face coverings](#), [guidance on prevention, testing and wellness](#), [resources and links](#), [archived weekly updates](#) and the [weekly PDF summary](#). [East Bay HIV service organizations](#) are providing services by phone and/or video.

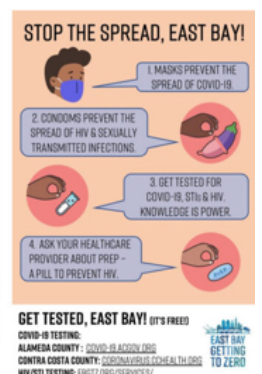
KEY UPDATES FOR THIS WEEK:

East Bay strategic planning process: Save the date for our [next meeting on writing the strategic plan](#): Friday, October 23, 10-11:30 am. Our goal is for the East Bay HIV strategic plan to be community-designed and driven. Please [use this form](#) to provide input and feedback on the strategic plan at any point, including input on how we should include key communities.

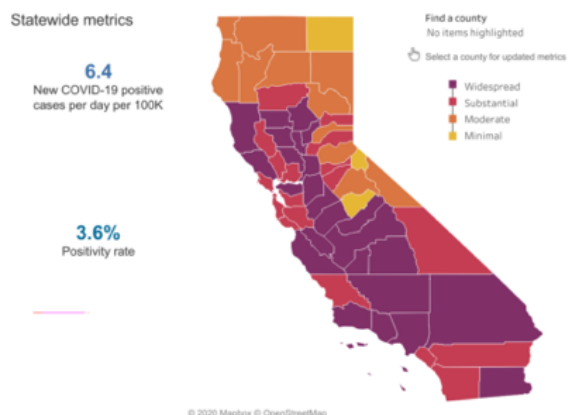
East Bay Getting to Zero has developed **HIV & COVID-19 prevention palm cards** in collaboration with Jesse Brooks, Terri Lynn Haggins and Moises Jauregui. They are available for any of our network agencies to download & print [here](#). If you would like EBGTZ to print some for your clients/patients, please reach out to Yamini (yamini@ebgtz.org).

2020 Election: Monday September 21 was National Voter Registration Day. The November 3rd election is upon us. Please register to vote or check your registration status [here](#). Learn more about voting by mail [here](#). In light of the COVID-19 related poll worker shortage, [Alameda](#), [Contra Costa](#) & [Solano](#) counties are all in need of poll workers to make sure the 2020 election goes smoothly.

EAST BAY COVID-19 UPDATES



This week Alameda and Solano counties moved to the next lower (red) tier and Contra Costa is in its first week of meeting red tier criteria in California's [Blueprint to Safer Reopening](#). This is good progress reflecting the fact that COVID-19 cases and test positivity rates in the East Bay continue to trend downward.



County risk level	New cases	Positive tests
WIDESPREAD Many non-essential indoor business operations are closed	More than 7 daily new cases (per 100k)	More than 8% Positive tests
SUBSTANTIAL Some non-essential indoor business operations are closed	4 - 7 daily new cases (per 100k)	5 - 8% Positive tests
MODERATE Some indoor business operations are open with modifications	1 - 3.9 daily new cases (per 100k)	2 - 4.9% Positive tests
MINIMAL Most indoor business operations are open with modifications	Less than 1 daily new cases (per 100k)	Less than 2% Positive tests

Alameda and Solano counties are now allowed by the state to reopening additional red tier activities, but local health officers may proceed more cautiously. Counties in the red tier are permitted to open schools for in-person learning after two weeks in the red tier. [Solano County](#) is following state allowances for business and school reopenings. [Alameda County](#) is not

making any changes at this time, though is prioritizing consideration of in-person school reopenings and watching trends over the next two weeks.

Contra Costa needs to meet red tier criteria for two consecutive weeks before it can move into the red tier. A county must remain in a tier for a minimum of three weeks before being able to advance to a less restrictive tier and can only move one tier at a time.

[Current estimated transmission rates](#) are 0.87 in Alameda County, 0.88 in Contra Costa and 0.96 in Solano County, compared to 0.89 statewide. Transmission rates have been less than 1 since late August. That means on average each person with COVID-19 transmits the virus to fewer than one other person. Our goal is to keep transmission rates less than 1 so cases continue to decrease.

ALAMEDA COUNTY:

- [3.5 new cases](#) of COVID-19 per day per 100,000 residents.
- [2.5%](#) testing positivity rate.
- [20,839 cumulative cases](#) and 395 deaths.
- [91 hospitalized patients](#) (highest was 213 on 7/28), including 35 ICU patients (highest was 73 on 8/20) with confirmed COVID-19.
- [0.87](#) transmission rate on the ensemble [Cal-CAT](#) model (down from 0.91 last week) and 0.61 on the [LEMMA](#) hospital data model (down from 0.65 last week).

CONTRA COSTA COUNTY:

- [6.5 new cases](#) of COVID-19 per day per 100,000 residents.
- [4%](#) positivity rate.
- [0.88](#) transmission rate, down from 0.89 last week.

SOLANO COUNTY:

- [6.5 new cases](#) of COVID-19 per day per 100,000 residents.
- [3.4%](#) positivity rate.
- [0.96](#) transmission rate, up from 0.89 last week.

UPCOMING COVID-19 COMMUNITY TESTING EVENTS IN OAKLAND

The [Sanando Juntos Fruitvale testing event](#) will be held on September 26 and 27th in the La Clínica de la Raza parking lot at 35th Ave. and E. 12th St in Oakland for people in the 94601 zip code.

NEW STUDIES

Dining at restaurants and going to bars and coffee shops, settings where mask wearing cannot be maintained, are associated with symptomatic COVID-19 positivity: A case-control [study](#) conducted at 11 U.S. healthcare facilities compared exposures in symptomatic COVID-19 cases and negative controls to better understand drivers of community transmission. Cases were twice as likely as controls to report dining at a restaurant in the two weeks preceding symptom onset, although the survey did not distinguish between indoor versus outdoor dining. Positive cases were also almost 4 times more likely to report going to a bar or coffee shop. Community activities where mask wearing cannot be maintained, such as when eating and drinking, may be higher risk for acquiring symptomatic COVID-19.



Hospitalizations for COVID-19 among younger adults in US increase dramatically in July. [A study](#) analyzed the clinical characteristics and outcomes of 3,222 young adults (ages 18-34) in the US who were hospitalized with COVID-19 and found that those with morbid obesity and hypertension were at higher risk for severe COVID-19.

These studies underscore the importance of maintaining face coverings and distancing in all settings around others and for all age groups, including young adults.







Our **summary of [COVID harm reduction strategies](#)** is constantly updated with new studies.

Free COVID testing sites: [Click here for Alameda County](#), [Contra Costa County](#) and [Solano County testing sites](#).

To stay safe during wildfire season and the pandemic, we all need to:

- Stay in cooler locations away from smoke,
- Wear non-medical N95s when unable to stay indoors during times of unhealthy air quality,
- [Wear face coverings](#) when in public and within 30 feet of others,
- Maintain at least six feet distance from others,
- Sanitize or wash hands frequently, and
- Stay home when sick.

COVID-19 harm reduction strategies:
Use as many of these as you can!

Strategy	% reduction
 1. Masking	60-95%
 2. Distancing	53-88%
 3. Eye protection	78%
 4. Stay outdoors	~95% <small>In one case series</small>
 5. Hand hygiene	28-45%
 6. Testing/isolation	33%

Updated 8.17.20 * Data compiled by Sophie S. Wong, MD
Icons by Good Ware, Firepik and Sign on Flaticon.com
Please see [EBGTZ.org/resources](#) for the complete list of sources for this table.

OTHER UPDATES AND OPPORTUNITIES:

- **Funding opportunities:**
- The **Centers for Disease Control and Prevention** has announced the publication of [Notice of Funding Opportunity \(NOFO\) PS21-2102](#): Comprehensive High-Impact HIV Prevention Programs for Community-Based Organizations. There are 90 total awards available (all non-profits providing HIV care in 32 states including CA are eligible excluding institutions of higher education); Average one-year award of \$470,000; Approximate performance period of 5 years; LOI due 9/30/2020 and application due 11/20/2020. There will be a [Listen Only Overview Webinar](#) on September 24, 2020 at 12 noon. East Bay organizations are encouraged to apply. After submitting an LOI, organizations are encouraged to reach out to Dr. Sami Lubega (sami@ebgtz.org) to discuss alignment of applications to the overall regional [strategic priorities](#).
 - Community Solutions for Health Equity is a program of the **Robert Wood Johnson Foundation (RWJF)** launched in the summer of 2019. It is focused on elevating the voices of communities of color and other communities left out of discussions when local health care systems in the United States are creating policy. Applicant organizations must demonstrate the capacity to manage awards of this size, either directly or with the benefit of technical assistance. LOI due on 10/7/20. Learn more about the opportunity [here](#).
 - The **Governor's Office of Business and Economic Development (GO-Biz)** will award grants California Community Reinvestment Grants to local health departments and qualified community-based nonprofit organizations to support activities for communities disproportionately affected by past federal and state drug policies, also known as the War on Drugs via: job placement, mental health treatment, substance use disorder treatment, system navigation services, legal services to address barriers to reentry, linkages to medical care. Learn more [here](#).
 - **Gilead** is offering funding opportunities that allow nonprofit organizations to advance important programs in the community and/or seek expert assistance to strengthen their own organizational capacity. They are hosting a live webinar to provide an

overview of the programs tomorrow, Thursday, 9/24 at 11 a.m. Register [here](#).

- **Job opportunities:**

- **Centro Legal De La Raza** has multiple positions open including: Managing Attorney, Legal Assistant, Financial Coordinator. Learn more about open positions [here](#).
- **Brighter Beginnings** has multiple positions open including Assistant Program Administrator, Behavioral Health Therapist, Medical Director and Family Nurse Practitioner. Learn more about the open positions [here](#).
- **Alliance for Girls** has fellowship openings for Research & Program, Research and Advocacy. Learn more about the opportunity [here](#).

- **Youth Opportunities:**

- The **Alameda County Health Care Services Agency's EMS Corps** is a 5 month paid (stipend) program where participants will receive Emergency Medical Technician (EMT) training, in depth life coaching and participate in community service events. The program's objective is to produce exceptional Emergency Medical Technicians who are professionally and personally qualified to service the community with basic life support care via the Emergency Medical Services (EMS). Learn more about the opportunity [here](#).
- **Mentoring in Medicine & Science** The MIMS Mentor Program is designed to meet the needs of current college, post-baccalaureate students and graduates. The 6-month program pairs aspiring health professionals from underrepresented backgrounds with a practicing health professional or health professional school students. Participants will receive support and advice on their short-term and long-term educational, career, personal and professional development goals. Learn more about the opportunity [here](#).

- **Webinars:**

- **American Public Health Association** is hosting their fourth webinar in the Advancing Racial Equity series. [Racial Healing for Ourselves, Our Communities and Our Future](#) will be offered on Tuesday, September 29, 12 – 1:30 p.m. EDT. This webinar will discuss racial healing as essential for dismantling racism and advancing racial equity.
- **National Minority AIDS Council (NMAC)** is going to be in conversation with Congresswomen Barbara Lee on Thursday, Sep 24th at 10am about the effect of COVID on EHE funding. She will be interviewed by Joe Huang-Racalto, NMAC's Director of Government Relations. [Register Here](#).
- On September 23rd, **BARHII** will host a webinar that explores the re-entry system in the era of COVID-19. They'll examine how the pandemic has created new challenges for individuals released from incarceration and for service providers that offer re-entry resources. They will be joined by experts from government and non-profit across the Bay Area. Click [here](#) to register.

- **Public Comment:** The U.S. Department of Health & Human Services (HHS), through the Office of the Assistant Secretary for Health and its Office of Infectious Disease and HIV/AIDS Policy (OIDP), has been coordinating development by federal partners throughout HHS and other departments of the first-ever [STI National Strategic Plan](#) to address the nation's STI epidemic. HHS seeks input from a broad mix of stakeholders on whether the plan's goals, objectives, and strategies appropriately address the STI epidemic and whether there are any critical gaps. Read and learn more [here](#).

- **Survey opportunity:** CrossBay Together: has re-opened their survey. They would like to hear from more women in all survey categories: PLHIV, Provider and community member at large. Additionally they would like to hear from more folks under the age of 32. Visit [their website](#) to fill out the survey.

HIV services during COVID-19: [Click here for Contra Costa HIV services](#) and [see our online directory for Alameda County HIV services](#).

If your organization is in Alameda County and needs COVID-related supplies or staffing, please go to the [Emergency Medical Services website](#) to [request PPE](#), [request staffing](#) and [request testing supplies](#).

Please follow and share our [Instagram](#), [Facebook](#) and [Twitter](#) accounts.

ALAMEDA COUNTY DETAILED UPDATES:

TRENDS IN CASES AND HOSPITALIZATIONS

Case rates continue to slowly trend downward after a peak in mid-July. Hospitalization rates continue to slowly trend down after peaks in August. Our goal is for cases to be flat or decreasing.

- [3.5 new cases](#) of COVID-19 per day per 100,000 residents and a test positivity rate of 2.5% reported by



CDPH using data through September 12

- [20,839 cumulative cases and 395 deaths.](#)
- On September 22, there were [91 hospitalized patients](#) (highest was 213 on 7/28), including [35 ICU patients](#) (highest was 73 on 8/20) with confirmed COVID-19.

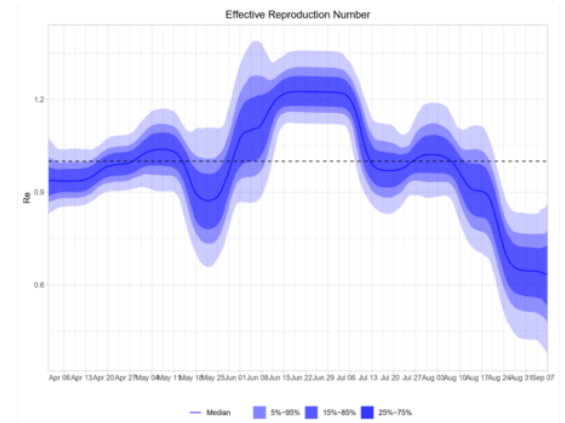
The [LEMMA](#) COVID-19 prediction model using hospital data through September 21 estimates the median Alameda County transmission rate (R_t) to be 0.61, down from 0.65 last week and a peak of 1.24 in late June. This means each person with

COVID-19 on average transmits the virus to 0.61 other people. If we keep the transmission rate less than 1, new cases will decrease.

The [California COVID Assessment Tool \(Cal-CAT\)](#) uses an ensemble of eight models, and estimates our transmission rate to be 0.87, down from 0.91 last week and compared to 0.89 statewide.

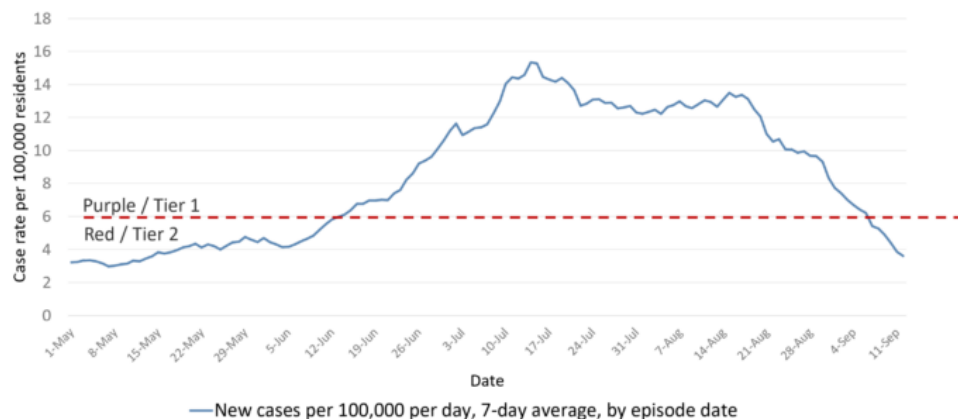
Please help us get the message out to communities with the [Mask On, Alameda County](#) campaign. [Face coverings are mandatory statewide](#) for everyone over the age of 2.

For help with enforcement or report violations of workplace safety orders in Alameda County, please email: COVID19compliance@acgov.org



Trends in Alameda County transmission rates (LEMMA model)

Alameda County COVID-19 Daily Case Rate, 2020



Source: CalREDIE Data Distribution Portal download September 20, 2020 9:15 am.



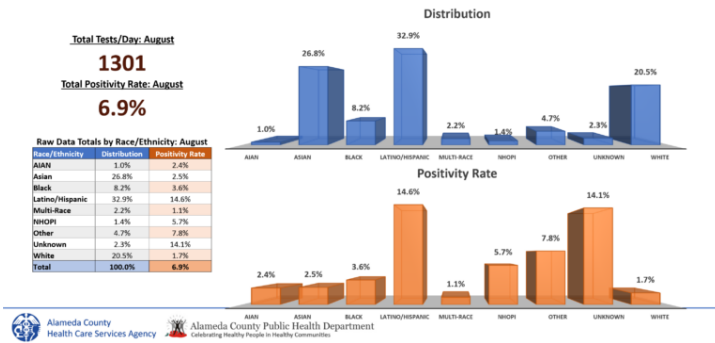
9

DISPARITIES AND EQUITY

[Updated race and ethnicity data in Alameda County](#) show that Latinx people continue to face the highest case rates and Blacks/African Americans continue to face the highest death rates. Currently Latinx people have 6.4 times the case rate and 1.5 the death rate compared to Whites. Blacks/African Americans have 2.1 times the case rate and 2.1 times the death rate compared to Whites. Native Americans have 1.9 times and Pacific Islanders have 2.2 times the case rate compared to Whites. These disparity rates are similar this week (within 0.2) compared to last week.

The highest case and positivity rates in Alameda County continue to be in the Fruitvale and Coliseum zip codes in East Oakland and the 880-highway corridor.

Race/Ethnicity Totals Across the Six (6) Sites We Have Raw Data For



Among the 6 Alameda County community testing sites that provided raw demographic data in August (see graph), people who self-identify as Latinx have the highest positivity rate at 14.6% compared to a 6.9% overall positivity rate and a 1.7% positivity rate among Whites.

Pacific Islander communities in the US face disproportionate COVID-19 infections, hospitalizations, and deaths, in addition to Black, Latinx, and Native American communities. Many Pacific Islanders immigrated under the [Compact of Free Association \(COFA\)](#), which allows residents from Micronesia, the Marshall Islands, and Palau to live in the US but not have citizenship or legal permanent residency,

which makes it more challenging to access social services. Pacific Islanders in the US are disproportionately employed in low-wage frontline occupations at high risk for outbreaks, such as [meat or poultry plants](#), and are disproportionately impacted by [diabetes](#), a risk factor for worse outcomes from COVID-19.

These persistent disparities underscore the urgent need to address racial and socioeconomic inequities in economic stability, workplace safety, education and access to precautions, rapid access to testing, safe isolation housing, quarantine, medical care, and income replacement.

Community COVID-19 testing sites and events utilize geographic and racial/ethnic disparity data to provide testing and outreach services to the communities disproportionately impacted by the pandemic and social determinants of health.

TESTING

We have conducted over [4,000 tests per day](#) in the past week, which is above our goal of 3,100 per day. The percentage of people testing positive is 2.5%, using CDPH data through September 12. This is within our positivity rate goal of less than 8%, but continues to vary greatly by zip code and race/ethnicity.

Upcoming testing events and new testing sites:



- The [Sanando Juntos Fruitvale testing event](#) will be held on September 26 and 27th in the La Clínica de la Raza parking lot at 35th Ave. and E. 12th St in Oakland for people in the 94601 zip code.
- Glad Tidings Church in Hayward started testing Wednesday through Saturday, 11am-4pm beginning on Wednesday, September 23. Hours may change after a soft launch week.
- The [Global Communication Education and Art \(GCEA\)](#) launched a pop-up site at Kidus Michael Ethiopian Orthodox Church, 678 26 St, Oakland. The site will operate once a week on Wednesdays for three weeks beginning Wednesday, September 23.

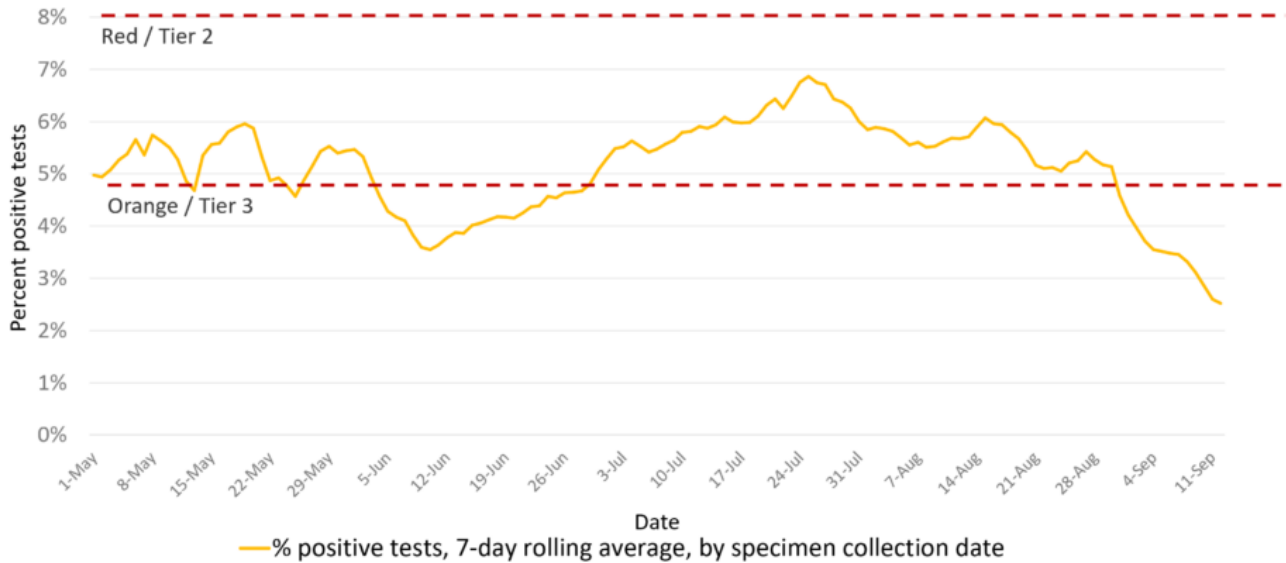
Alameda County Health Care for the Homeless (ACHCH) and its partners (ACPHD, Roots, LifeLong Medical Care, Hayward/Fremont Fire Departments, and others) have conducted 1,277 COVID tests in homeless shelters and encampments, with 40 positive results, in 60 different testing events, for an overall positivity rate of 3.1%. Project Roomkey hotel sites, where ACHCH and ACPHD coordinate regular testing with 304 tests conducted and 29 positive results, for a positivity rate of 9.5%.

Updated testing locations and appointment links are posted the [COVID-19 testing webpage](#) and searchable in this [interactive map of COVID-19 services](#) (click to filter for COVID-19 testing). 11 community testing sites offer free tests using [county testing guidance](#) for any community member with symptoms, all essential workers and those at higher medical risk regardless of symptoms.

Testing sites provide critical support with disease containment by:

- distributing [isolation orders](#) and [contact tracing information](#) for all people getting tested,
- reminding people to stay home until they get test results and to pick up calls from the health department, and
- submitting full names, addresses, dates of birth and phone numbers and demographics (including race, ethnicity, sexual orientation, and gender identity) for all positive cases, including positive antigen results, using the [COVID-19 Confidential Mortality Report \(CMR\)](#).

Alameda County COVID-19 Test Positivity, 2020



Sources: 1) CalREDIE Data Distribution Portal download September 21, 2020 9:15 am. 2) Avellino master spreadsheet.



10

CASE AND CONTACT INVESTIGATIONS, ISOLATION AND QUARANTINE

COVID-19 UPDATE

What is contact tracing?

Testing and tracing help prevent the spread of infectious diseases like COVID-19.

Testing and tracing are completely private! You will not be asked for your social security number or your immigration status.

Stay Informed

Please click to view "How COVID-19 Can Spread in the Community"

Call 2-5-1 or text "COVID19" or "coronavirus" to 311211 to receive general information.

Check Public Health Department's website: www.acphd.org

Subscribe to our social media

Alameda County currently has 45 outbreak investigators and 150 trained case investigators/contact tracers, including 28 at community-based organizations, with a goal to reach 300 in the fall. Between September 16 through 18, 56% cases were reached within 24 hours of receiving contact information, and 61% cases were reached within 48 hours. The Community Resource Group delivered 578 boxes of food last week to people who need to isolate or quarantine.

[Project Roomkey](#) continues to provide isolation/quarantine housing for people living in crowded conditions or are experiencing homelessness.

Rolling applications for the COVID-19 case investigation and contact tracing services funding opportunity are due every first and third Friday of the month. For more information, go to: [Request for Qualification \(RFQ\) No. HCSA-900420](#).

The Alameda County Responsibility to Community Health (ARCH) Program provides financial assistance to self-isolating County residents in high-risk communities who have tested positive for COVID-19. For more information, please see the [FAQ](#) and [press release](#).

HOSPITAL CAPACITY AND SURGE PLANNING

As of September 22, our [hospital capacity](#) indicators are:

- 4% of the patients in hospital beds across Alameda County were confirmed COVID-19 positive (highest was of 10.8% on 7/22), 12% of ICU patients were COVID-19 positive (highest was 24% on 8/20). These percentages have been decreasing since the end of August and within our goal of 50% or less.
- 38% of the staffed inpatient hospital beds and 39% of the ICU beds were available, which is within our goal of above 20%. 76% of the mechanical ventilators were available.

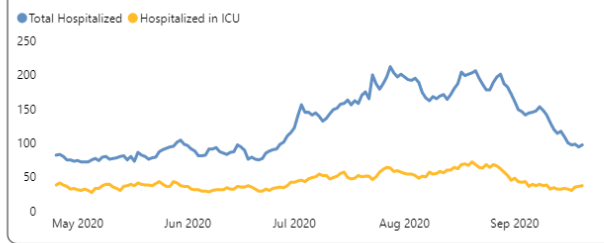
HOSPITALIZATION DATA

Counts and Capacity Over Time [Mobile version](#)

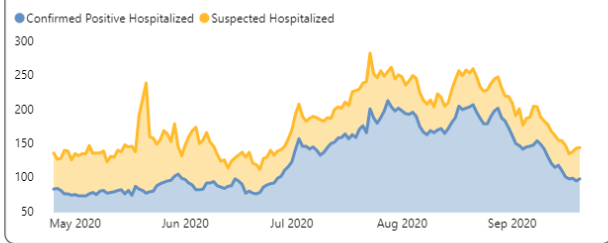


Alameda County Hospitalizations COVID-19 Dashboard

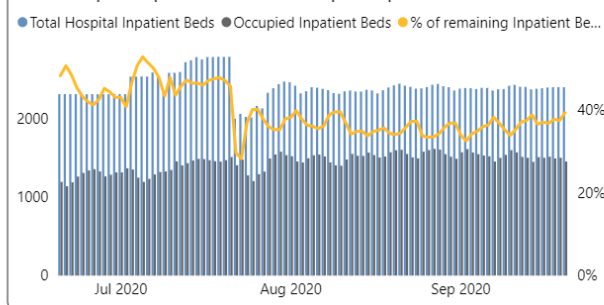
Alameda County Total COVID-19 Hospitalizations



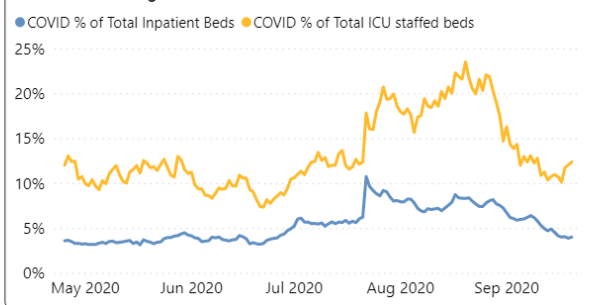
Confirmed and Suspected Inpatients



Total Hospital Inpatient Beds vs Occupied Inpatient Beds



COVID Percentage of Beds



If your facility in Alameda County needs COVID-related supplies or staffing, please go to the [Emergency Medical Services website](#) to [request PPE](#), [request staffing](#) and [request testing supplies](#).

Opportunities to help:

- [California Health Corps](#) – Use this link to register for the California Health Corps which is a State program for trained medical and healthcare workers to sign up and provide availability to assist in the COVID-19 response.
- [Medical Surge Volunteer Sign Up](#) – Use this link to register as a volunteer with the County of Alameda to assist with the COVID-19 response. Medically and non-medically trained volunteers will be needed. [Click here for more information](#).

TOP LINKS:

- **HIV:** [FAQs for people living with HIV \(PLWH\)](#) and [Preguntas Frecuentes in Spanish](#), [Guidance for PLWH \(CDC\)](#), [Guidance for HIV providers](#)
- **HIV services during COVID-19:** [Click here for Contra Costa HIV services](#) and [see our online directory for Alameda County HIV services](#).
- **Key Communities:** [Harm Reduction Coalition](#), [Immigrants Rising](#), [Protecting Immigrant Families: Public Charge](#), [Healthcare for the Homeless](#)
- **COVID Testing, Food, Shelters:** [Alameda County COVID testing and services](#) and [isolation housing](#), [Contra Costa County COVID testing](#)
- **COVID PPE, staffing or testing supplies:** [Alameda County EMS- request PPE](#), [request staffing](#) or [request testing supplies](#).
- **Public Health Department Updates:** [Alameda County](#), [Contra Costa County](#), [Solano County](#), [California State](#)
- **COVID Data:** [Alameda County](#), [Contra Costa County](#), [Solano County](#), [California State](#), [California \(SF Chronicle\)](#), [National/Global \(JHU\)](#), [By Race](#)
- **DIY Face Coverings and Masks:** [CDC \(easy no-sew\)](#), [Kaiser \(sewn\)](#), [Maker Mask \(sewn, science-based\)](#), [Olson Mask \(sewn\)](#)

ALAMEDA COUNTY GUIDANCE:

Download links for **Alameda County community or business** guidance on: [Face coverings](#), [social bubbles](#), [childcare and camps for all children](#), [graduations](#), [vehicular gatherings](#), [construction](#), [curbside retail pickups](#), [manufacturing and warehousing](#), [personal services](#).

Download links for **Alameda County clinical guidance** on: [COVID-19 testing](#), [isolation orders in 7 languages](#) for all people getting tested, [reporting COVID-19 cases](#), [Project Roomkey isolation housing](#), [home health agencies](#), [remdesivir allocations](#), [routine vaccines](#), reporting pediatric [Multisystem Inflammatory Syndrome](#), [resumption of non-urgent medical services](#), and [testing in Skilled Nursing Facilities](#).

If your organization is in Alameda County and needs COVID-related supplies or staffing, please go to the [Emergency Medical Services website](#) to [request PPE](#), [request staffing](#) and [request testing supplies](#).

LOOKING FOR COVID-19 TESTING?

- [Alameda County COVID testing sites: searchable map](#) (filter for COVID-19 testing) or [webpage](#). This list includes several community-based sites offering free testing for anyone with symptoms, including people without health insurance.
- [Contra Costa County free drive-through or walk-in COVID testing](#)
- [Solano County free testing sites](#)
- Please check the listing for updates and call the testing site before you leave your home/shelter/camp/car to make sure they are open for testing, you are eligible, and register if needed.
- If you don't have a provider and have COVID symptoms: In Alameda County, call Alameda Health System 510-437-8500 for a phone screen and guidance. In Contra Costa County, call 844-729-8410. In Solano County, the county COVID warmline is 707-784-8988.
- If you're having difficulty breathing and unstable, please go to your nearest emergency room.

[BACK TO UPDATES](#)



ABOUT
GROUPS
YOUTH
SERVICES
COVID-19
RESOURCES
UPDATES
EVENTS
GET INVOLVED
DONATE

[Privacy Policy](#) [Site Map](#) [Site Credits](#) [Contact Us](#) [Login](#)