



HIV and COVID-19 weekly updates: August 3-7, 2020

Did you receive this update as a forward? Would you like to join our list directly? If so, please send us a quick message [here](#).

Alameda County has released a **Request for Proposal (RFP) for the Ending the HIV Epidemic \$20k 4-month innovation grants** due on September 18. Bidders conferences will be held on August 11 and 12. RSVP [here](#). For more information, click [here](#).

[Protecting Immigrant Families](#) has updated their **Public Charge: What Advocates Need to Know Fact Sheet**. People applying for lawful permanent resident (LPR) or “green card” status should be reassured that health, housing and nutrition benefits will not factor into their applications right now with the New York District Court’s injunction. Testing, prevention, or treatment for COVID-19 will NOT be used against immigrants in a public charge test. The California Health and Human Services Agency has also released updated statements on the public charge rule in [English](#) and [Spanish](#).

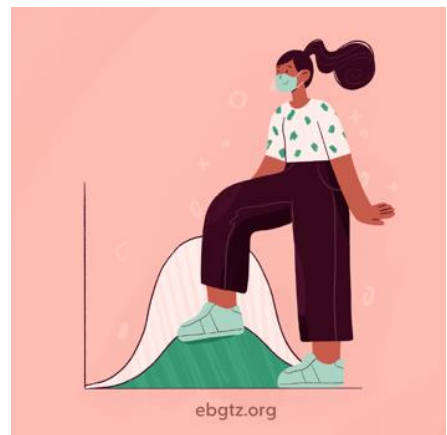
Strategic planning workshop on Friday, September 11th, 10am-11:30am: Save the date for this virtual workshop on the East Bay Getting to Zero and Ending the HIV Epidemic 5-year strategy. Registration and Zoom details will be sent next week and posted on our [website](#).

East Bay Covid-19 updates

We are entering our seventh month of the pandemic. Alameda, Contra Costa and Solano Counties continue to be on the [California State Data Monitoring List](#) due to persistently elevated COVID-19 cases, defined as having more than 100 new cases per 100,000 people over 14 days. Case numbers for this week after undercounted due to a statewide electronic lab reporting problem, and numbers will need to be corrected. Hospital data is not impacted. Trends prior to the data glitch suggest a stabilization in July at high case rates after 2 months of increases.

Reopening has paused in the East Bay. Schools may not reopen for in-person learning until the county has been off the Monitoring List for two weeks. The State has issued a waiver process for elementary schools in counties with improved indicators, but it is unclear if any East Bay counties will apply.

- **Alameda County:**
 - [107.7 cases \(undercount\) per 100,000 people](#) over the past 14 days; last week the case rate was 113.
 - August 5, there are 12,136 reported cases of Covid-19 (undercount) and 193 deaths.
 - On August 4, there were 196 hospitalized patients (highest was 213 on 7/28), including 53 ICU patients (highest was 65 on 7/27) with confirmed Covid-19.
 - The transmission rate (Re) based on hospital data using the LEMMA model is estimated to be 1.02, down from 1.2 in mid-June.



This week Alameda County approved an extension on the county-wide eviction moratorium, a rental assistance program to serve 300 people, a \$10 million financial assistance program providing \$1,250 stipends for people

who have Covid-19 living in the most highly impacted zip codes. On August 6, Health Care Services Agency will launch a newly designed [Covid-19 website](#).

- **Contra Costa County:** 117.7 cases (undercount) per 100,000 people over the past 14 days; last week's case rate was 130. There is a total of 8,176 reported cases and 131 deaths.
- **Solano County:** 141.8 cases (undercount) per 100,000 people over the past 14 days; last week's case rate was 159. There is a total of 3,806 reported cases and 38 deaths.

Health Officer Dr. Bela Matyas [said in the SF Chronicle](#) that 95% of all cases reported in Solano County over the past three weeks were tied to social gatherings, such as birthday parties, weddings and funerals at parks and in homes.

'They Know What A Pandemic Is': HIV Survivors See Similarities To AIDS Epidemic [4-minute audio recording and article on NPR](#) describes how people living with HIV have used their experience and resilience with the HIV epidemic as a strength during the Covid-19 pandemic.

An [NPR/Ipsos poll](#) of 1,115 US adults found broad support for a single, national strategy to address the pandemic and more aggressive measures to contain it. 76% of respondents support enacting state laws to require mask wearing in public at all times and nearly 60% said they would support a nationwide order making it mandatory to shelter at home for two weeks.

If everyone wears a mask whenever in public, we can control this pandemic and significantly reduce cases and deaths within 6 weeks.

Our [summary of Covid harm reduction strategies](#) is constantly updated with these and other new studies.

Free Covid testing sites: [Click here for Alameda County](#), [Contra Costa County](#) and [Solano County testing sites](#).

Other updates and opportunities:

Syringe Service Programs funded: [Harm Reduction Coalition's press release](#) announcing CHRI awards to 37 syringe service programs statewide.

Webinar: PAETC's **Using Harm Reduction to Address Racial Equity in Healthcare** webinar has been rescheduled for Friday, August 28th from 11:30 am – 12:30 pm. The speakers include Monique Tula, Executive Director of the Harm Reduction Coalition and Braunz E. Courtney, Executive Director of HEPPAC. Learn more and register [here](#).

Poster Presentation: EBGZ, Alameda Health Consortium and Alameda Health System presented a poster at AIDS 2020 titled: **Overcoming barriers to rapid ART in real-world community health center and public hospital settings**. To see the poster and listen to the audio presentation, click [here](#).



Effectiveness of COVID harm reduction strategies

Strategy	% reduction
1. Masking	60-95%
2. Distancing	53-88%
3. Eye protection	78%
4. Hand hygiene	28-45%
5. Case isolation	33%
6. Contact tracing	10-20%



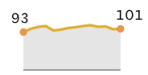

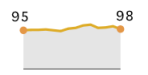
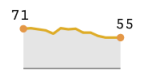

Data compiled by Sophy S. Wong, MD
Icons by Freepik and Srip on Flaticon.com
Please see [EBGTZ.org/resources](#) for the complete list of sources for this table.

Paid Professional Development Opportunity: UCSF's Preterm Birth Initiative is launching the second cohort of Benioff Community Innovators in October 2020 in Oakland. This Research Justice Workforce Development Program will work with community scholars to research issues related to Black and Brown preterm birth and use those findings to create policy and change that will affect the birth outcomes in Oakland. For more information, click [here](#).

You can always go to the EBGZT [website](#) for the detailed updates (usually posted Wednesday evenings). Please follow and share our [Instagram](#), [Facebook](#) and [Twitter](#) accounts.

Checklist: How Bay Area counties are measuring progress

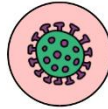
This chart will be updated weekly with information reported by the county officials. Last updated July 31, 2020 2:47 p.m.

County	Cases Flat or decreasing	Counts flat or decreasing	Hospitals Below 50% COVID patients Hospitalizations over past two weeks	Testing Tests per 100k people per day	Tracing Goal Percent of cases	PPE 30-day supply
Alameda	✗	✗	✓ 		✗ 73.1%	✗
Contra Costa	✗	✗	✓ 		✗ 28%	✓
Marin	✗	✗	✓ 		✗ 46% as of June 15	✓
San Francisco	✗	✗	✓ 		✗ 84%	✗
San Mateo	✗	✗	✓ 		? Cannot calculate metric	✗ 14-day supply
Santa Clara	✗	✗	✓ 		✗ 70%	✓

Updates for Alameda County in the main Covid strategy areas:

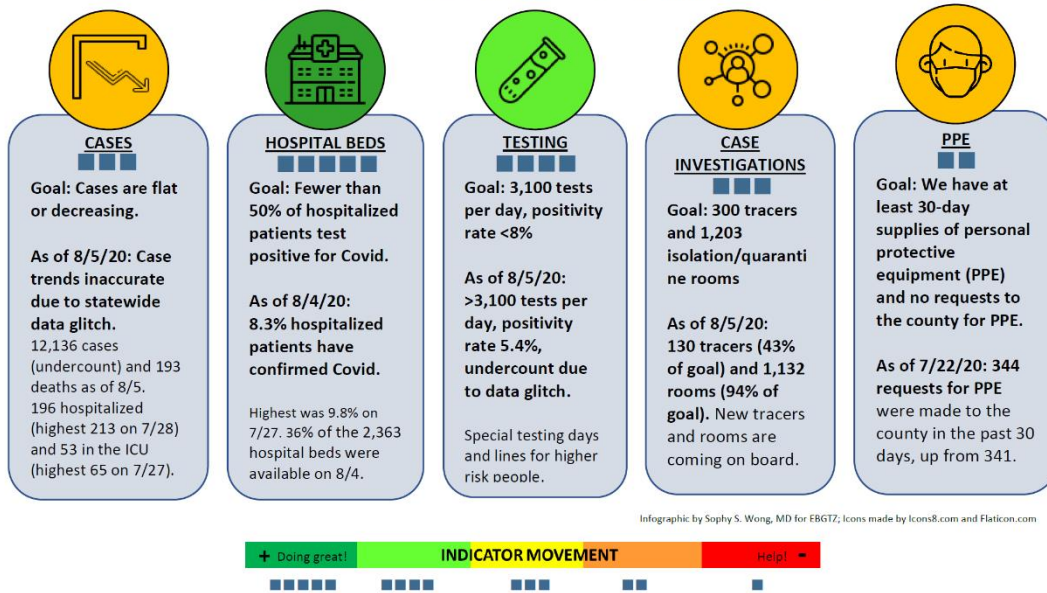
Progress on COVID-19 Indicators

The rate of hospitalizations appears to have stabilized after 2 months of increases, and new cases are undercounted in the past week due to statewide problems in lab data reporting. We are exceeding our goal of conducting 3,100 tests per day. Testing positivity rates have increased in the past week from 5 to 5.4%, though this is also impacted by data reporting delays. The percentage of people hospitalized and Covid-19 positive has decreased to 8.3% compared to a high of 9.8% last week and still below the goal of 50%. Hospital capacity is 36% of our inpatient beds (same as last week), and 100% of our surge beds remain available. Health facilities continue to make significant requests for PPE from the county. All indicators remain at the same status levels this week compared to last week.



Alameda County COVID-19 Indicators: August 5, 2020

How we are assessing progress on containing COVID-19



Trends in Cases and Hospitalizations

Case and hospitalization rates appear to have stabilized after 2 months of increases. However, technical problems with electronic lab reporting since July 28 at the state level has resulted in an undercount of cases. Our goal is for cases to be flat or decreasing. This indicator remains a 3 until data corrections are made.

As of August 4, there were:

- 12,136 reported cases of Covid-19 (undercount) and 193 deaths. This represents 11.7 deaths per 100,000 people, compared to 24.8 deaths per 100,000 people in California State overall.
- 107.7 new cases per 100,000 people over 14 days, which is down from the case rate of 113 last week, though still above the 100-case threshold for being on the State Monitoring List. The goal is to have 24 or fewer new cases per 100,000 people.
- 196 hospitalized patients (highest was 213 on 7/28), including 53 ICU patients (highest was 65 on 7/27) with confirmed Covid-19.

The graph of case reports shows the case trend prior to the data reporting problem. New weekly cases appeared to level off in July at about 1,300 new cases per week, over 4 times higher than the 300 cases per week we were seeing in April-May.

Due to the lab and case reporting delays statewide, the current transmission rate (R_e , or effective reproductive number) using a composite of 6 models on the California COVID Assessment Tool (Cal-CAT) may be inaccurate. The LEMMA model uses hospital data (which is not impacted by the statewide data problem) and estimates the median Alameda County transmission rate on July 22 to be 1.02, down from over 1.2 in mid-June. When the R_e is greater than 1, cases increase exponentially.

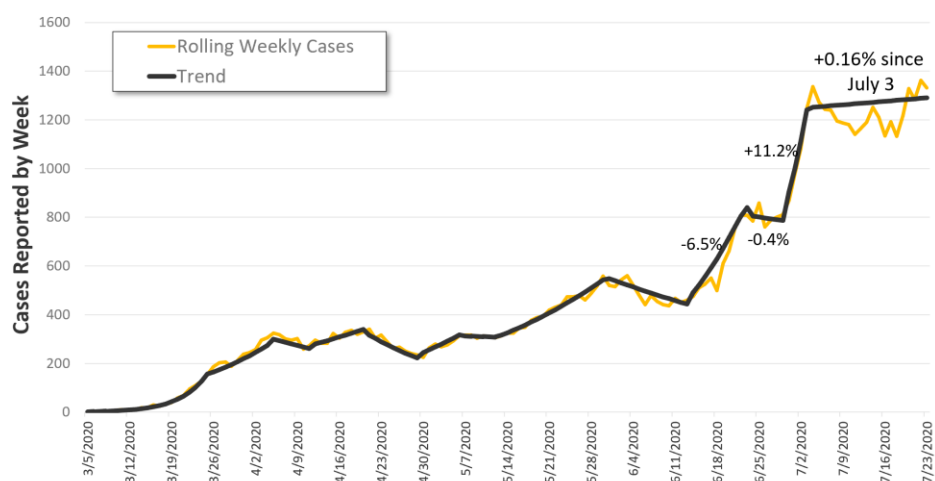
Our goal is to get the transmission rate (R_e) to less than 1 to reduce case, hospitalization and death rates. To do so, we need to improve our use of preventive measures, including everyone wearing face coverings and maintaining distance in all settings, including social gatherings at parks and in homes.

Please help us get the message out to communities with the [Mask On, Alameda County](#) campaign.

For help with enforcement or report violations of workplace safety orders in Alameda County, please email: COVID19compliance@acgov.org

The Alameda County COVID-19 strategy document can be [downloaded here](#).

Trends Alameda County COVID-19 Case Reports, 2020



Source: CalREDIE Data Distribution Portal download; includes CalREDIE entries through July 23, 2020.

6

Disparities and Equity

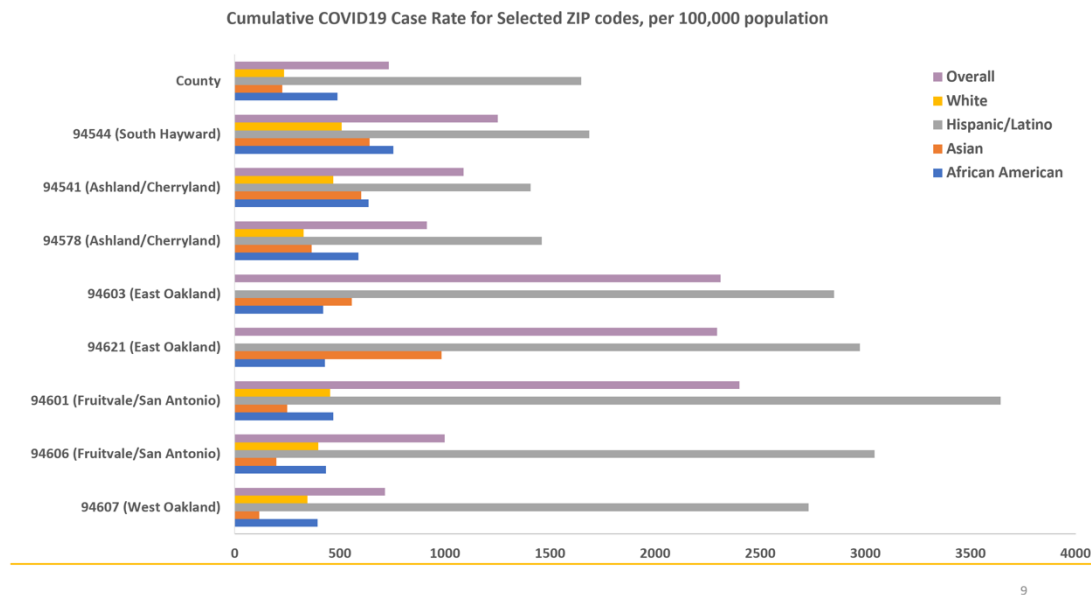
Updated [race and ethnicity data](#) as of August 5 show persistent disparities, though cases in the past week represent an undercount. The Covid-19 diagnosis rate among Latinx people is 6.9 times the Covid-19 case rate of Whites, up from 6.3 last week. The death rate among Latinx people is 1.5 times that of Whites. Black/African American people have 2.1 times the case rate of Whites, up from 1.5 last week. The death rate among Black/African Americans is 2.6 times the death rate of Whites, compared to 2.2 a week ago. Native Americans have 2.6 times the case rate compared to Whites. Pacific Islanders have 2.3 times the case rate compared to Whites.

Race and ethnicity data are still missing for about 19% cases overall, and the testing task force is working on improving demographic reporting.

By age, most new cases are among people ages 18-50, while nearly all the deaths are among people ages 51 and above. People above the age of 80 have nearly 13 times the death rate compared to all ages.

By location, Covid-19 test positivity rates remain highest for people living in the Fruitvale/San Antonio (11%), East Oakland/Coliseum (16-17%), Hayward (10%), Ashland/Cherryland (8%) zip codes, compared to a 5.4% positivity rate overall, showing a disproportionate impact in communities of color. Latinx people have the highest case rates per 100,000 people in each of these zip codes.

Alameda County continues efforts through our Health Equity Team and participation in the [Racial Disparity Task Force](#) to address the persistent and urgent need to address racial and socioeconomic inequities in workplace safety, education, and access to precautions, rapid access to testing, safe isolation, quarantine, and medical care.



Testing

We are past our goal of conducting 3,100 tests per day. The positivity rate increased to 5.4% compared to 5% last week. These numbers are also undercounted and impacted by the statewide data reporting delays. Our goal of having an 8% or lower positivity rate. This indicator remains a four.

To address long waits for testing appointments, some county testing sites are designating priority days for higher risk populations. The Pleasanton site is prioritizing testing based on the [CDPH testing](#) tiers. Native American Health Center is planning testing days for health care workers. The Hayward site, which has moved to a location near Skywest golf course, plans to have a priority testing line for first responders. Lab result delays continue to be a challenge.

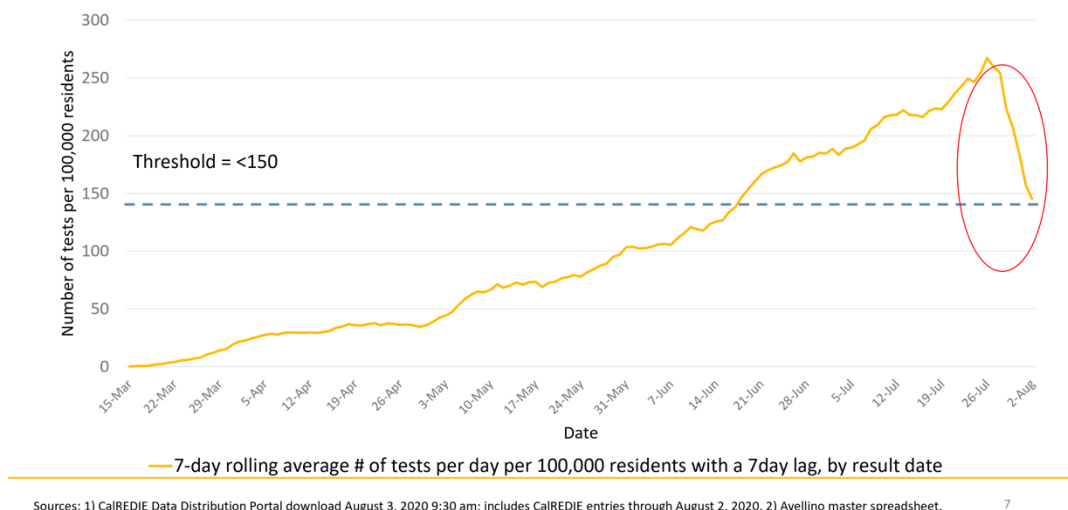
Updated testing locations and appointment links are posted the [Covid-19 testing webpage](#) and searchable in this [interactive map of Covid-19 services](#) (click to filter for COVID-19 testing). 10 sites offer free tests for any community member with symptoms and all essential workers, people who have protested, and those at higher medical risk regardless of symptoms.

Antigen testing for the SARS-CoV-2 virus (Covid-19), while faster and simpler to run, is not recommended at community testing sites because it results in too many false negative and false positive results. In the next two weeks, the county testing task force will launch an information campaign to education the community around the difference between molecular diagnostic (PCR), antigen and antibody tests.

Testing sites provide critical support with disease containment by:

- distributing [isolation orders](#) for all people getting tested,
- reminding people to stay home until they get test results and to pick up calls from the health department, and
- submitting full names, demographics, addresses, dates of birth and phone numbers for all positive case reports.

Alameda County COVID-19 Testing



Case and Contact Investigations, Isolation and Quarantine

Alameda County currently has more than 130 case investigators and contact tracers with a goal to reach 300 in the fall. This indicator remains a 3.

The Contact Tracing Request for Proposals (RFP) will be released this week with a goal to get several more community-based organizations on board by mid-September. La Clínica, West Oakland Health Center, Roots Community Health center and Tiburcio Vasquez Health Center have immediate action contracts and have begun case investigations and contact tracing in the communities with the highest rates of COVID-19.

Project Roomkey continues to expand and provide isolation/quarantine housing for people living in crowded conditions or are experiencing. A new Project Roomkey hotel in Livermore will bring our total to 1,132 rooms, which is 94% towards our goal of 1,203 rooms. A new tiny homes project in San Leandro will have 30 units to serve people with complex medical conditions. Alameda County has committed to provide permanent housing for 400 people from Safer Ground hotel sites by September 3.

Clearance for work and transfers: Alameda County has issued a health advisory on the Discontinuation of Transmission-Based Precautions and Release from Home Isolation Guidance Following a COVID-19 Infection. County guidance aligns with CDC guidance to *not recommend re-testing* to release patients from isolation in community settings, hospital settings, and for health care personnel to return to work. A time- and symptom-based strategy is recommended instead. This is because people continue to shed detectable SARS-CoV-2 RNA (resulting in a positive test) but are no longer infectious. The County is working on a version of this document written in lay language that can be given to employers to help people returning to work.

Hospital Capacity and Surge Planning

As of August 4, our hospital capacity indicators are:

- 8.3% of the patients in hospital beds across Alameda County were confirmed COVID-19 positive (highest was of 9.8% on 7/27) and within our goal of 50% of less.
- 18% of the patients in ICU beds were confirmed COVID-19 positive (highest was 22% on 7/27).

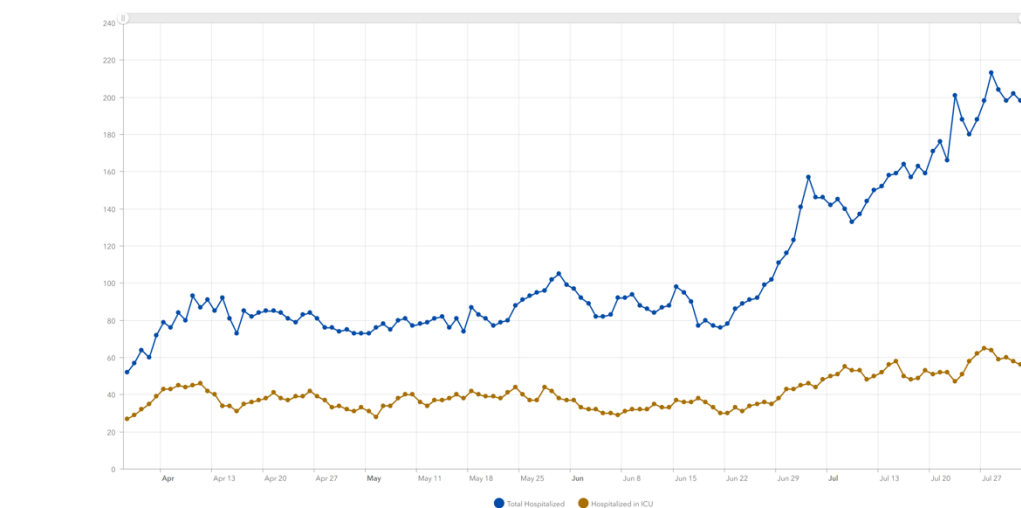
- 36% of the 2,363 total inpatient hospital beds and 31% of the 300 ICU beds were available, and 100% of the 1,221 surge beds were available. This indicator remains a five.
- There continue to be significant requests to the county for PPE. As of July 22, there were 344 requests for PPE from the county in the last 30 days, and our goal is zero requests. This indicator remains a two.

Opportunities to help:

- [California Health Corps](#) - Use this link to register for the California Health Corps which is a State program for trained medical and healthcare workers to sign up and provide availability to assist in the COVID-19 response.
- [Medical Surge Volunteer Sign Up](#) - Use this link to register as a volunteer with the County of Alameda to assist with the COVID-19 response. Medically and non-medically trained volunteers will be needed. [Click here for more information.](#)

If your facility needs COVID-related supplies or staffing, please go to the [Emergency Medical Services website](#) to [request PPE](#), [request staffing](#) and [request testing supplies](#).

Alameda County Total COVID-19 Hospitalizations



8

TOP LINKS:

- **HIV:** [FAQs for people living with HIV \(PLWH\)](#) and [Preguntas Frecuentes in Spanish](#), [Guidance for PLWH \(CDC\)](#), [Guidance for HIV providers](#)
- **HIV services during COVID-19:** [Click here for Contra Costa HIV services](#) and [see our online directory for Alameda County HIV services](#).
- **Key Communities:** [Harm Reduction Coalition](#), [Immigrants Rising](#), [Protecting Immigrant Families: Public Charge](#), [Healthcare for the Homeless](#)
- **COVID Testing, Food, Shelters:** [Alameda County COVID testing and services](#) and [isolation housing](#), [Contra Costa County COVID testing](#)
- **COVID PPE, staffing or testing supplies:** [Alameda County EMS– request PPE](#), [request staffing](#) or [request testing supplies](#).

- **Public Health Department Updates:** [Alameda County](#), [Contra Costa County](#), [Solano County](#), [California State](#)
- **COVID Data:** [Alameda County](#), [Contra Costa County](#), [Solano County](#), [California State](#), [California \(SF Chronicle\)](#), [National/Global \(JHU\)](#), [By Race](#)
- **DIY Face Coverings and Masks:** [CDC \(easy no-sew\)](#), [Maker Mask \(sewn, science-based\)](#), [Olson Mask \(sewn\)](#)

ALAMEDA COUNTY GUIDANCE:

Download links for **Alameda County community or business** guidance on: [Face coverings](#), [social bubbles](#), [childcare and camps for all children](#), [graduations](#), [vehicular gatherings](#), [construction](#), [curbside retail pickups](#), [manufacturing and warehousing](#), [personal services](#).

Download links for **Alameda County clinical guidance** on: [COVID-19 testing](#), [isolation orders in 7 languages](#) for all people getting tested, [reporting COVID-19 cases](#), [Project Roomkey isolation housing](#), [home health agencies](#), [remdesivir allocations](#), [routine vaccines](#), [reporting pediatric Multisystem Inflammatory Syndrome](#), [resumption of non-urgent medical services](#), and [testing in Skilled Nursing Facilities](#).

If your organization is in Alameda County and needs COVID-related supplies or staffing, please go to the [Emergency Medical Services website](#) to [request PPE](#), [request staffing](#) and [request testing supplies](#).

LOOKING FOR COVID-19 TESTING?

- [Alameda County COVID testing sites: searchable map](#) (filter for COVID-19 testing) or [downloadable PDF](#). This list includes several community-based sites offering free testing for anyone with symptoms, including people without health insurance.
- [Contra Costa County free drive-through or walk-in COVID testing](#)
- Please check the listing for updates and call the testing site before you leave your home/shelter/camp/car to make sure they are open for testing, you are eligible, and register if needed.
- Alameda County COVID-19 testing sites are free and open for testing for all people who have COVID-19 symptoms and health care workers regardless of symptoms. Click on the testing site name to make online appointments: [Roots Community Health Center](#), [Allen Temple](#), [REACH Youth Center](#) and [Alameda County offices in Hayward](#).
- If you don't have a provider and have COVID symptoms: In Alameda County, call Alameda Health System 510-437-8500 for a phone screen and guidance. In Contra Costa County, call 844-729-8410. In Solano County, the county COVID warmline is 707-784-8988.
- If you're having difficulty breathing and unstable, please go to your nearest emergency room.