



HIV and COVID-19 weekly updates: July 27-31, 2020

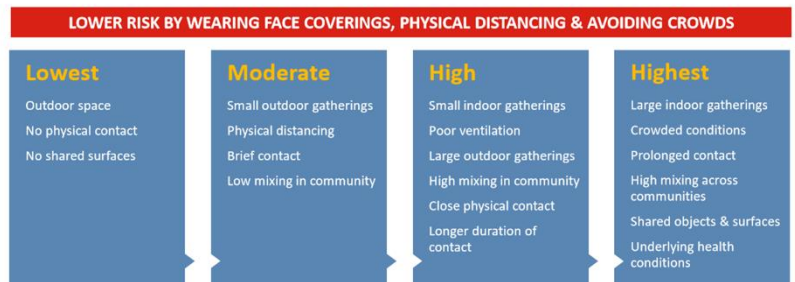
Save the Date: Please mark your calendars for the next East Bay linkage & retention and PrEP combined network meeting: Friday, September 11th, 2020, 10am-11:30am. This will be a virtual strategic planning workshop where we brainstorm the local Ending the HIV Epidemic 5-year strategy and plan, including how to improve collaborations and implement innovative models of service delivery. Registration and Zoom details will be sent within a few weeks and posted [here](#). This workshop is hosted by a collaboration with the Alameda County Department of Public Health and Pacific AIDS Education & Training Center – Bay Area.

Injunction against the Public Charge rule: On July 29, the United States District Court for the Southern District of New York issued a new temporary injunction against the DHS Public Charge rule. The Public Charge rule adds barriers for immigrant families applying for green cards to access services. The new order bars the implementation, application, and enforcement of the rule *nationwide* so long as there is a declared national emergency related to the COVID-19 pandemic.

East Bay Covid-19 updates

Alameda, Contra Costa and Solano Counties continue to be on the [California State Data Monitoring List](#) due to persistently elevated COVID-19 cases, defined as having more than 100 new cases per 100,000 people over 14 days. Reopenings have paused, and schools may not reopen for in-person learning until the county has been off the Monitoring List for two weeks.

COVID-19 Risk



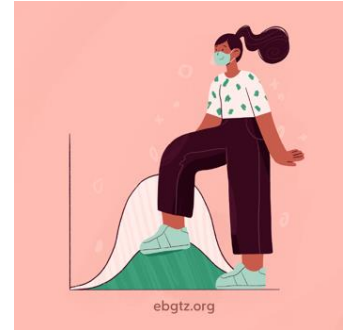
Alameda County:

- 113.1 cases per 100,000 people over the past 14 days, up from 103 last week.
- As of July 29, there are 10,773 reported cases of COVID-19 and 181 deaths. This represents 11 deaths per 100,000 people, compared to 22.3 deaths per 100,000 people in California State overall.
- As of July 28, there were 213 hospitalized patients (new high), including 64 ICU patients (highest was 65 on 7/27) with confirmed Covid-19.
- Recent inspections show inadequate face covering and distancing in outdoor dining and alcohol service.
- Transmission rate (Re)=1.05, down from 1.1 last week. An Re over 1 means that the case trends are increasing. The California statewide Re is 1.02.
- Testing delays remain challenging, with up to one week waits to get a test and another 1-2 weeks to get results. Staying home and masking while waiting for tests and results is important to prevent spread.

- **Contra Costa County:** 130.2 cases per 100,000 people over the past 14 days, up from 111 last week; Re=1.14, up from 1.11 last week.
- **Solano County:** 159.1 cases per 100,000 people over the past 14 days, up from 134 last week; Re=1.09, down from 1.21 last week.

Our goal is to keep the transmission rate (Re) to less than 1.

A new article in JAMA critiques the CDC's use of weighted population in reporting **Covid-19 racial/ethnic inequities**, as it underestimates the excess burden of Covid-19 among Black and Latinx individuals compared with analyses conducted using the total unweighted population in the US Census data. Updated race/ethnicity data in Alameda County (unweighted) shows persistent inequities with Latinx people 6.3 times the case rate compared to Whites, and Black/African Americans with 2.2 times the death rate of Whites.



Effectiveness of COVID harm reduction strategies

Strategy	% reduction
1. Masking	60-95%
2. Distancing	53-88%
3. Eye protection	78%
4. Hand hygiene	28-45%
5. Case isolation	33%
6. Contact tracing	10-20%



Data compiled by Sophy S. Wong, MD
Icons by Freepik and Strip on Flaticon.com
Please see EBGZ.org/resources for the complete list of sources for this table.

Help us with preventing spread! Covid-19 continues to be widespread in our region. Increasing evidence supports the use of face masks or coverings whenever out in public, including outdoors. Not only does wearing masks protect others by blocking our respiratory droplets from coming out, they also reduce our exposure to droplets that may contain the SARS-CoV2 virus that causes Covid-19. Dr. Monica Gandhi at UCSF is studying the impact of masks on reducing “viral inoculum,” or the amount of virus we’re exposed to, with a [paper in press](#).

Our **summary of Covid harm reduction strategies** is constantly updated with these and other new studies.

EBGTZ will be launching an integrated HIV and Covid prevention community messaging campaign. Check out our steering committee sporting their masks!



Other updates and opportunities:

Funding Opportunity: The UCSF Pandemic Initiative for Equity and Inclusion (UPIEA) has released a funding opportunity announcement and will hold a Town Hall on Thursday, July 30, 4:30 – 5:30pm to provide additional information. Click [here](#) for more info and to register for the Town Hall.

Funding Opportunity: The Office of Minority Health (OMH) announces the availability of funds to achieve two main goals: (1) test modifications to existing public health programs or practices (interventions) to assess if the modified intervention is successful in significantly improving health outcomes for selected health issues; and (2) develop and begin to implement effective plans that will sustain successful interventions after the award period. Learn more [here](#).

Job Opportunity: Lifelong Medical Care is looking for a [School Based Services-Program Manager](#) who will work as part of a team of health care providers to improve the health status of students at LifeLong's school-based centers. Find out more [here](#).

Job Opportunity: The Office of AIDS (OA) within the California Department of Public Health is looking for a Disease Investigation Coordinator. For more info, click [here](#).

Survey: Last chance! [Cross-Bay Together survey](#) is due Friday, 7/31.

This survey is an outgrowth of collaborative planning for AIDS 2020, the 23rd International AIDS Conference, which took place virtually July 6-10, 2020. Your input will assist Crossbay Together to develop a regional plan that represents the latest thinking and best experiences in addressing HIV our region.

You can always go to the [EBGTZ website](#) for the detailed updates (usually posted Wednesday evenings). Please follow and share our [Instagram](#), [Facebook](#) and [Twitter](#) accounts.

Checklist: How Bay Area counties are measuring progress

This chart will be updated weekly with information reported by the county officials. Last updated July 24, 2020 1:09 p.m.

County	Cases Flat or decreasing	Counts flat or decreasing	Hospitals Below 50% COVID patients	Hospitalizations over past two weeks	Testing Tests per 100k people per day	Tracing Goal	Percent of cases	PPE 30-day supply
Alameda	✗	✗	✓			✗	78% as of July 17	✗
Contra Costa	✗	✗	✓			✗	33%	✓
Marin	✗	✗	✓			✗	46% as of June 15	✓
San Francisco	✗	✗	✓			✗	82%	✗
San Mateo	✗	✗	✓			?	Cannot calculate metric	✗ 14-day supply
Santa Clara	✗	✗	✓			✗	70%	✓

Updates for Alameda County in the main COVID strategy areas:

Alameda County has reached the six-month milestone in pandemic response and recognizes that the threat from Covid-19 will be with us for a significant period of time. The Covid-19 Operations team is now addressing the resources and infrastructure needed over the next 1-5 years to proactively manage the pandemic and minimize the harm it causes to our community.

The Community Assessment and Transport Teams (CATT) of Alameda County launched on July 20, serving individuals in crisis by assessing behavioral health and substance abuse issues on scene and triaging resources needs rather than transporting to an emergency room or the local psychiatric emergency services unit. 9-1-1 calls will be evaluated for referral to CATT. Teams are comprised of an Emergency Medical Technician (EMT) and a Licensed Behavioral Health Clinician operating in Oakland, San Leandro, and Hayward.

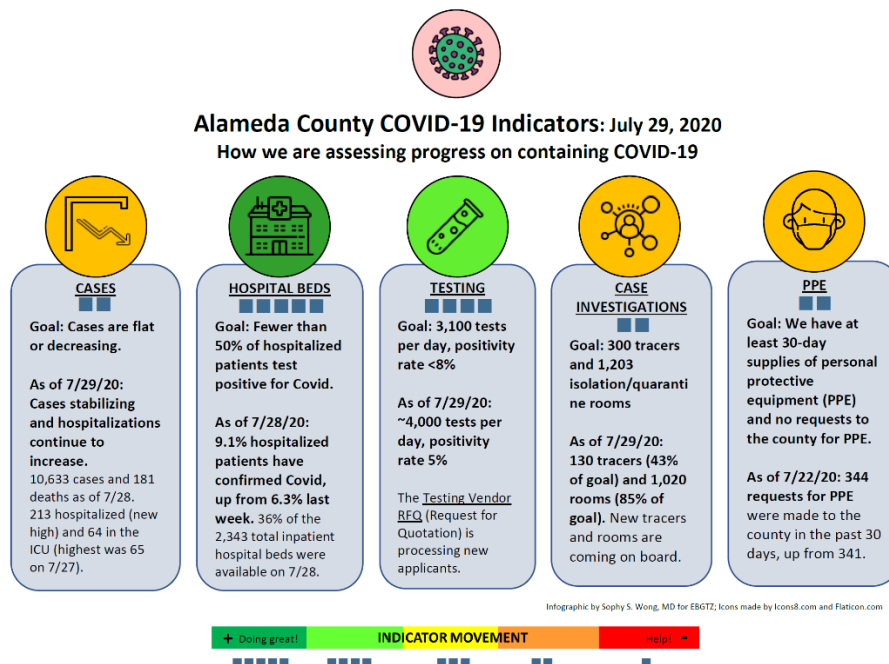
Alameda County continues to be on the [California State Data Monitoring List](#) with Covid-19 cases persistently above 100 new cases per 100,000 people over 14 days. While outdoor dining is still allowed, reopening has paused, and schools may not reopen for in-person learning until the county has been off the Monitoring List for two weeks.

"If we had 80% compliance with masking, we could reduce transmission somewhere between 50% to 60%, which is tremendous," said Dr. Mark Ghaly, secretary of the California Health and Human Services Agency. "That's exactly what we need to see the case numbers come down."

Face coverings are mandatory statewide for everyone over the age of 2. In Alameda County, face coverings must be worn outside our homes and within 30 feet of others, including outdoors. If everyone wears face coverings, we can get this pandemic under control in 6 weeks. Please model and help others with this simple, important and effective preventive measure.

The Department of Environmental Health (DEH) is conducting on-site routine inspections, prioritizing food facilities that are open and providing outdoor dining and alcohol service. DEH is finding that follow-ups are necessary as compliance to social distancing and face-covering is not at satisfactory levels for employees and patrons, and most likely contributed to increases in positive Covid cases.

Progress on COVID-19 Indicators



The rate of new cases appears to be stabilizing and hospitalizations have continued to increase, again reaching new highs on July 28. We are conducting about 4,000 tests per day, exceeding the goal of conducting 3,100 tests per day. The percentage of people hospitalized and Covid-19 positive has increased to 9.1% compared to 6.3% last week but is still below the goal of 50%. Hospital capacity has dropped to 36% of our inpatient beds (from 47% last week), and 100% of our surge beds remain available. Health facilities continue to make significant requests for PPE from the county. All indicators remain at the same status levels this week compared to last week.

Trends in Cases and Hospitalizations

Case rates appear to be stabilizing while hospitalization rates have continued to increase over the past week with new highs reported on July 28. We hope that the stabilization in case rates will lead to a stabilization in hospital rates. Our goal is for cases to be flat or decreasing. This indicator remains a two.

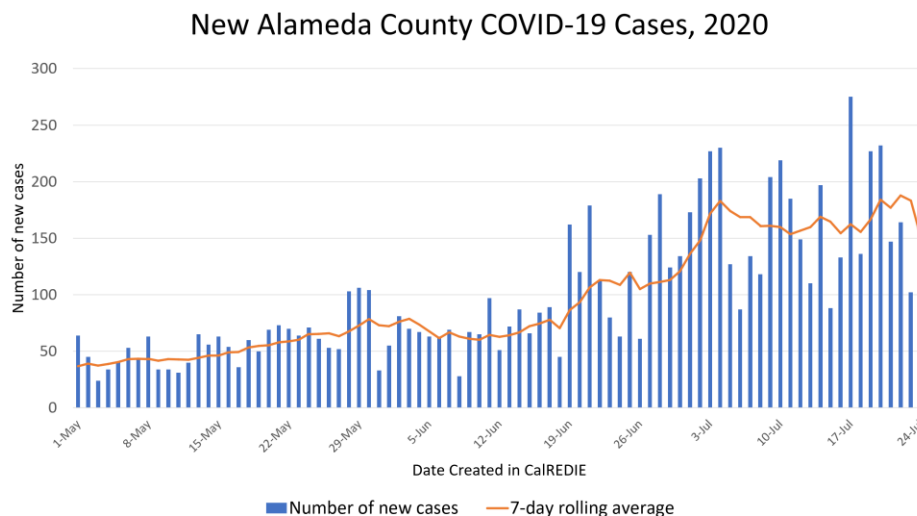
As of July 28, there were:

- 10,633 reported cases of Covid-19 and 181 deaths. This represents 11 deaths per 100,000 people, compared to 22.3 deaths per 100,000 people in California State overall.
- 113.1 new cases per 100,000 people over 14 days, which is up from the case rate of 103 last week, and above the 100-case threshold for being on the State Monitoring List. The goal is to have 24 or fewer new cases per 100,000 people.
- 213 hospitalized patients (new high), including 64 ICU patients (highest was 65 on 7/27) with confirmed Covid-19.

The county-level transmission rate (R_e , or effective reproductive number) as of July 27 is estimated to be 1.05 using a composite of 6 models on the [California COVID Assessment Tool \(Cal-CAT\)](#). California state's R_e is 1.02. This means each person in Alameda County who has COVID-19 on average transmits the virus to 1.05 other people. When the R_e is greater than 1, cases increase exponentially.

If the Alameda County transmission rate (R_e) remains 1.05, we are predicted to have 236 hospitalizations (19% increase) and 325 cumulative deaths (83% increase) on August 28. Our goal is to get the transmission rate (R_e) to less than 1 to reduce case, hospitalization and death rates.

To get the transmission rate to less than 1, we need to improve our use of preventive measures, including everyone wearing face coverings and maintaining distance in all settings outside our households. Please help us get the message out to communities with the [Mask On, Alameda County](#) campaign. The Alameda County COVID-19 strategy document can be [downloaded here](#).



Source: CalREDIE Data Distribution Portal download July 25, 2020 9:20 am; includes CalREDIE entries through July 24, 2020.

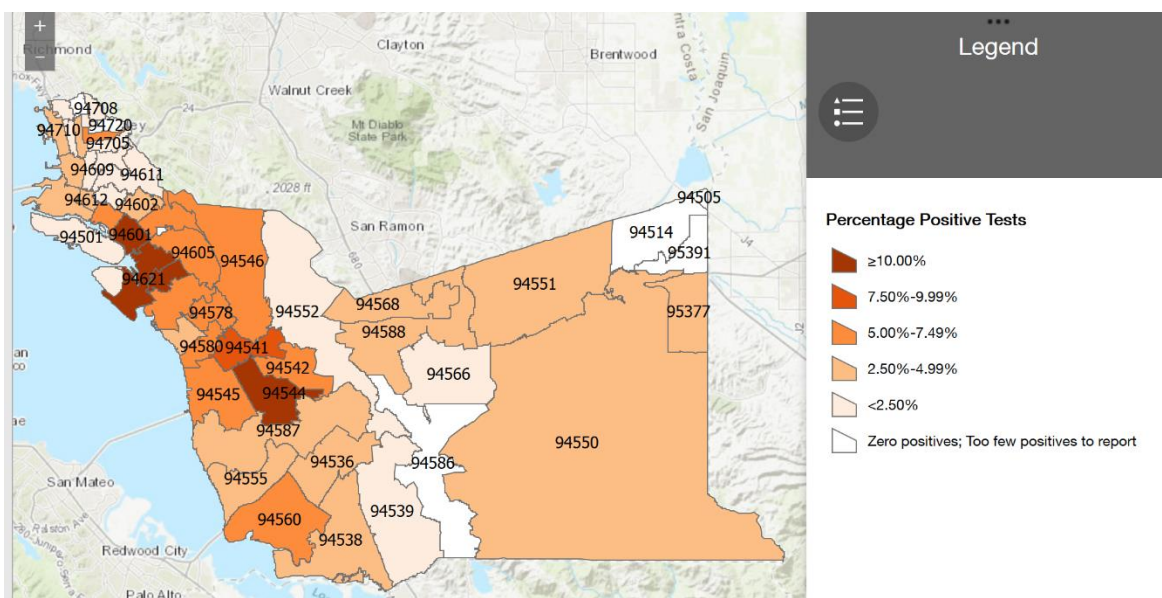
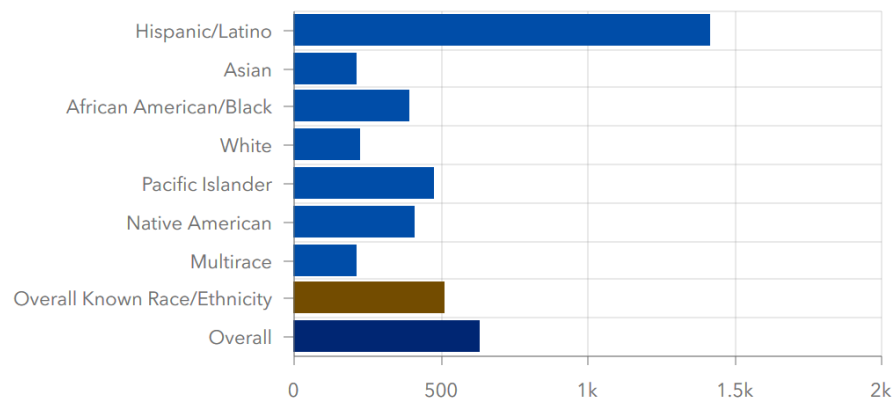
Disparities and Equity

Updated race and ethnicity data as of July 28 show persistent disparities, though the case rates among Whites increased this week. The COVID-19 diagnosis rate among Latinx people is 6.3 times the Covid-19 case rate of Whites, down from 6.7 times last week. The death rate among Latinx people is 1.5 times that of Whites. Black/African American people have 1.5 times the case rate of Whites, down from 1.8 last week. The death rate among Black/African Americans is now 2.2 times the death rate of Whites, compared to 2.4 times a week ago. Native Americans have 1.8 times the rate of cases compared to Whites. Pacific Islanders have 2.1 times the case rate compared to Whites.

Covid-19 test positivity rates remain highest for people living in the Fruitvale (11%), East Oakland/Coliseum (15-17%), and Hayward (10%) zip codes, comparing to a 5% positivity rate overall, showing a disproportionate impact in communities of color.

We continue efforts through our Health Equity Team and participation in the Racial Disparity Task Force to address the persistent and urgent need to address racial and socioeconomic inequities in workplace safety, education, and access to precautions, rapid access to testing, safe isolation, quarantine, and medical care.

Alameda County Total Case Rates per 100,000 Population by Race/Ethnicity



Testing

We are conducting about 4,000 tests per day and have exceeded our goal of 3,100 tests per day. The positivity rate remains at 5%, within our goal of having an 8% or lower positivity rate. This indicator remains a four.

The Alameda County Testing Task Force aims to increase testing access in Hayward at Glad Tidings Church and in our African immigrant communities with a testing site scheduled to open by the second week of August at 26th Street and MLK in Oakland.

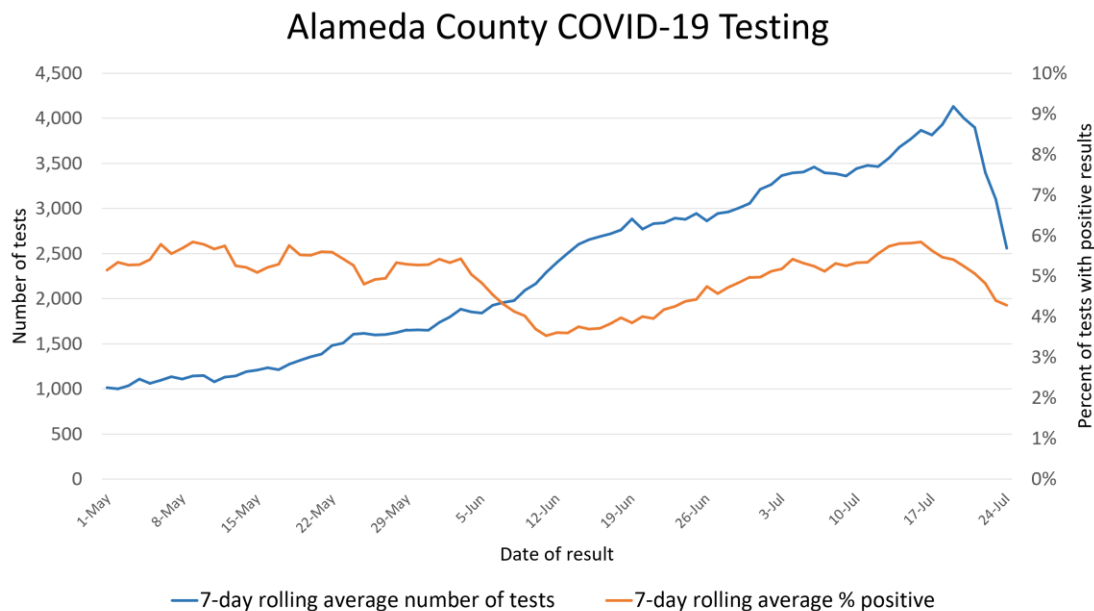
To address long wait times for testing appointments, the county is planning to designate priority days at community testing sites for those who have symptoms, nursing home staff and other essential workers who require immediate testing.

Updated testing locations and appointment links are posted the [COVID-19 testing webpage](#) and searchable in this [interactive map of COVID-19 services](#) (click to filter for COVID-19 testing). 10 sites offer free tests for any community member with symptoms and all essential workers, people who have protested, and those at higher medical risk regardless of symptoms.

To address long testing turnaround times of up to 2 weeks at some labs, the county is contracting with three local and California-based labs which are guaranteeing testing results within 72 hours.

With long delays in test results, providers provide critical support with disease containment by:

- distributing isolation orders for all people getting tested,
- reminding people to stay home until they get test results and to pick up calls from the health department, and
- submitting full names, addresses, dates of birth and phone numbers for all positive case reports.



Sources: 1) CalREDIE Data Distribution Portal download July 25, 2020 9:20 am; includes CalREDIE entries through July 24, 2020. 2) Avellino master spreadsheet.

Case and Contact Investigations, Isolation and Quarantine

Alameda County currently has more than 130 case investigators and contact tracers with a goal to reach 300 in the fall. The teams have fully transitioned to the state's Cal Connect contact tracing system. This indicator remains a two.

Contact Tracing Request for Proposals (RFP) will be released in early August. La Clínica, West Oakland Health Center, Roots Community Health center and Tiburcio Vasquez Health Center have immediate action contracts to provide support for case investigations and contact tracing in the communities with the highest rates of COVID-19. The first team through these contracts started case investigations this week, and all immediate action teams are expected to start by mid-August.

Project Roomkey continues to expand and provide isolation/quarantine housing for people living in crowded conditions or are experiencing. There are currently 1,020 rooms in operation, which is 85% towards our goal of 1,203 rooms. Another 100 rooms have been approved and 126 more rooms are being negotiated, which would bring our total to 1,246 rooms, exceeding our goal.

Alameda County has committed to provide permanent housing for 400 people from Safer Ground hotel sites by September 3.

Clearance for work and transfers: Alameda County will be issuing a health advisory within the week that mirrors CDC guidance to *not recommend re-testing* to release patients from isolation in community settings, hospital settings, and for health care personnel to return to work. A time- and symptom-based strategy is recommended instead. This is because people continue to shed detectable SARS-CoV-2 RNA (resulting in a positive test) but are no longer infectious.

Hospital Capacity and Surge Planning

As of July 28, Alameda County hospital capacity indicators are:

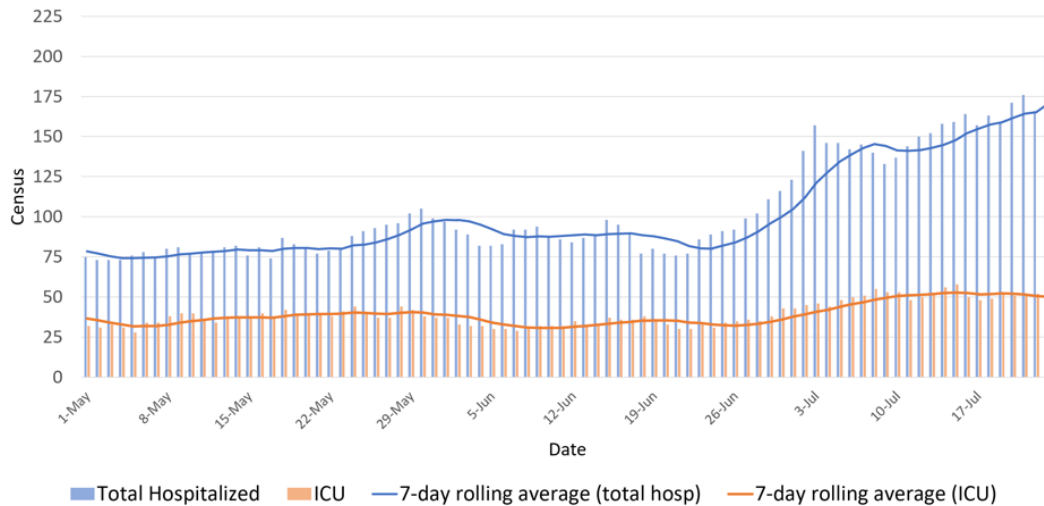
- 9.1% of the patients in hospital beds across Alameda County were confirmed COVID-19 positive, higher than 6.3% last week and 3.3% a month ago but still within our goal of 50% or less.
- 19% of the patients in ICU beds were confirmed COVID-19 positive, up from 12% last week.
- 36% of the 2,343 total inpatient hospital beds and 35% of the 330 ICU beds were available, and 100% of the 1,221 surge beds were available. This indicator remains a five.
- As of July 22, there were 344 requests for PPE from the county in the last 30 days, and our goal is zero requests. This indicator remains a two.

Opportunities to help:

- California Health Corps - Use this link to register for the California Health Corps which is a State program for trained medical and healthcare workers to sign up and provide availability to assist in the COVID-19 response.
- Medical Surge Volunteer Sign Up - Use this link to register as a volunteer with the County of Alameda to assist with the COVID-19 response. Medically and non-medically trained volunteers will be needed. Click here for more information.

If your facility needs COVID-related supplies or staffing, please go to the Emergency Medical Services website to request PPE, request staffing and request testing supplies.

COVID-19 Patients Hospitalized in Alameda County, 2020



Source: <https://data.ca.gov/dataset/covid-19-hospital-data/resource/42d33765-20fd-44b8-a978-b083b7542225>

TOP LINKS:

- **HIV:** [FAQs for people living with HIV \(PLWH\)](#) and [Preguntas Frecuentes in Spanish](#), [Guidance for PLWH \(CDC\)](#), [Guidance for HIV providers](#)
- **HIV services during COVID-19:** [Click here for Contra Costa HIV services](#) and [see our online directory for Alameda County HIV services](#).
- **Key Communities:** [Harm Reduction Coalition](#), [Immigrants Rising](#), [Protecting Immigrant Families: Public Charge](#), [Healthcare for the Homeless](#)
- **COVID Testing, Food, Shelters:** [Alameda County COVID testing and services](#) and [isolation housing](#), [Contra Costa County COVID testing](#)
- **COVID PPE, staffing or testing supplies:** [Alameda County EMS](#)— [request PPE](#), [request staffing](#) or [request testing supplies](#).
- **Public Health Department Updates:** [Alameda County](#), [Contra Costa County](#), [Solano County](#), [California State](#)
- **COVID Data:** [Alameda County](#), [Contra Costa County](#), [Solano County](#), [California State](#), [California \(SF Chronicle\)](#), [National/Global \(JHU\)](#), [By Race](#)
- **DIY Face Coverings and Masks:** [CDC \(easy no-sew\)](#), [Maker Mask \(sewn, science-based\)](#), [Olson Mask \(sewn\)](#)

ALAMEDA COUNTY GUIDANCE:

Download links for **Alameda County community or business** guidance on: [Face coverings](#), [social bubbles](#), [childcare and camps for all children](#), [graduations](#), [vehicular gatherings](#), [construction](#), [curbside retail pickups](#), [manufacturing and warehousing](#), [personal services](#).

Download links for **Alameda County clinical guidance** on: [COVID-19 testing](#), [isolation orders in 7 languages](#) for all people getting tested, [reporting COVID-19 cases](#), [Project Roomkey isolation housing](#), [home health agencies](#), [remdesivir allocations](#), [routine vaccines](#), [reporting pediatric Multisystem Inflammatory Syndrome](#), [resumption of non-urgent medical services](#), and [testing in Skilled Nursing Facilities](#).

If your organization is in Alameda County and needs COVID-related supplies or staffing, please go to the [Emergency Medical Services website](#) to [request PPE](#), [request staffing](#) and [request testing supplies](#).