



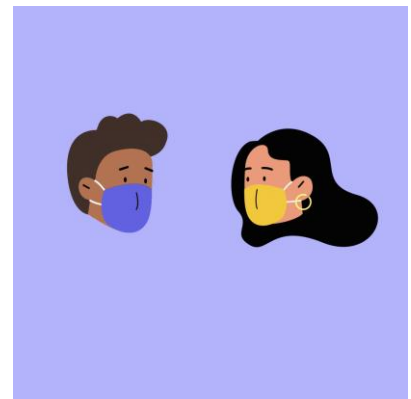
## COVID-19 weekly updates: July 20-24, 2020

**PLWH and COVID-19 risks/outcomes:** The Veterans Aging Cohort Study (VACS), including the largest HIV cohort in the US found that veterans with HIV did not run a higher risk of COVID-19 than veterans without HIV in a 7,576-person analysis. (Park et al, AIDS2020 abstract LBPEC23) Severe COVID-19 outcomes, including intubation and death, was not more likely in veterans with HIV. More details and other AIDS2020 abstract highlights are now freely accessible on the [NATAP website](#).

**AIDS 2020 Virtual Really Rapid Review** by Paul Sax for NEJM's Journal Watch is available now and includes many important highlights from the conference.







**Alameda, Contra Costa and Solano Counties continue to be on the [California State Data Monitoring List](#) due to persistently elevated COVID-19 cases**, defined as having more than 100 new cases per 100,000 people over 14 days. This means indoor malls must close, indoor religious services are not allowed, and schools may not reopen for in-person learning until the county has been off the Monitoring List for two weeks.

- **Alameda County:**
  - 103 cases per 100,000 people over the past 14 days.
  - There have been 9,643 cumulative reported cases of COVID-19 and 171 deaths. This represents 10.4 deaths per 100,000 people, compared to 20.2 deaths per 100,000 people in California State overall.
  - Hospitalizations reached a new high of 176 on 7/21/20, with 52 in the ICU (highest was 58 on 7/15).
  - Contact tracing shows increasing exposures at parties and social gatherings.
  - Transmission rate (Re)=1.1. An Re over 1 means that the case trends are increasing. The California statewide Re is 1.06.
- **Contra Costa County:** 111 cases per 100,000 people over the past 14 days; increasing case and hospitalization trends; Re=1.11
- **Solano County:** 134 cases per 100,000 people over the past 14 days; increasing trends and transmissions among farm workers, family and social gatherings; Re=1.21



The Alameda County Re increased in late June to 1.22 and has slowly trended down over the past 2 weeks. Our goal is to get the transmission rate (Re) to less than 1.

### Use a combination of these effective prevention strategies!

Strategy	% reduction
 1. Masking	60-95%
 2. Distancing	53-88%
 3. Eye protection	78%
 4. Hand hygiene	28-45%
 5. Case isolation	33%
 6. Contact tracing	10-20%

Data compiled by Sophia S. Wong, MD  
Icons by Freepik and Strip on Flaticon.com  
Please see [EBGTZ.org/resources](#) for the complete list of sources for this table.

**Help us with preventing spread!** COVID-19 is widespread in our region. In order to come off the State's Monitoring List and move forward with safer reopening, please be sure to model and help others with masking, distancing and hand hygiene. There's more info on our website on [COVID-19 harm reduction](#), [face coverings](#), and a [video and slides on the science behind face masks](#).

East Bay Getting to Zero is collaborating with the Community Health Center Network on a mask messaging campaign. More to come!

The Alameda County [COVID-19 Strategy](#) document is now available for download.

**Free COVID testing sites:** [Click here for Alameda County](#), [Contra Costa County](#), and [Solano County](#) testing sites.

**Other quick updates:**

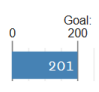

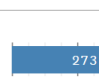
- **Mental health and suicide prevention guidance:** The Medical Board of California issued [this letter](#) for health care providers with tools and resources to help address mental health concerns and suicide prevention.
- **New eye protection guidance:** Alameda County Public Health Department and the CDC recommends [all health care staff to wear eye protection](#) in addition to their facemask to ensure the eyes, nose, and mouth are all protected from exposure to respiratory secretions during all patient care encounters.
- **Job opportunity:** [St. Joseph's Medical Center](#) in Stockton is looking for a FOCUS Program Manager. Find out more [here](#).
- **Implementation research funding opportunity:** The [Fast-Track Cities Implementation Science Fund](#) has released a request for Letters of Intent (LOIs) encouraging clinical and community researchers to apply for research funding aimed at evaluating interventions, policies, and strategies to improve urban HIV responses evaluated using implementation science criteria. IAPAC has extended the submission deadline for Letters of Intent (LOI) to July 31, 2020.

You can always go to the [EBGTZ website](#) for the detailed updates (usually posted Wednesday evenings). Please follow and share our [Instagram](#), [Facebook](#) and [Twitter](#) accounts.

Bay Area COVID checklist from [San Francisco Chronicle](#):

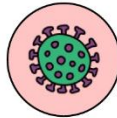
**Checklist: How Bay Area counties are measuring progress**

This chart will be updated weekly with information reported by the county officials. [Last updated July 17, 2020 5:24 p.m.](#)

County	Cases Flat or decreasing	Hospitals Counts flat or decreasing Below 50% COVID patients	Hospitalizations over past two weeks	Testing Tests per 100k people per day	Tracing Goal Percent of cases	PPE 30-day supply
Alameda	✗	✗	✓ 		✗ 78	✗
Contra Costa	✗	✗	✓ 		✗ 26	✓
Marin	✗	✗	✓ 		✗ 46% as of June 15	✓
San Francisco	✗	✗	✓ 		✗ 80	✗
San Mateo	✗	✗	✓ 		? Cannot calculate metric	✓* 14-day supply
Santa Clara	✗	✗	✓ 		✗ 70	✗

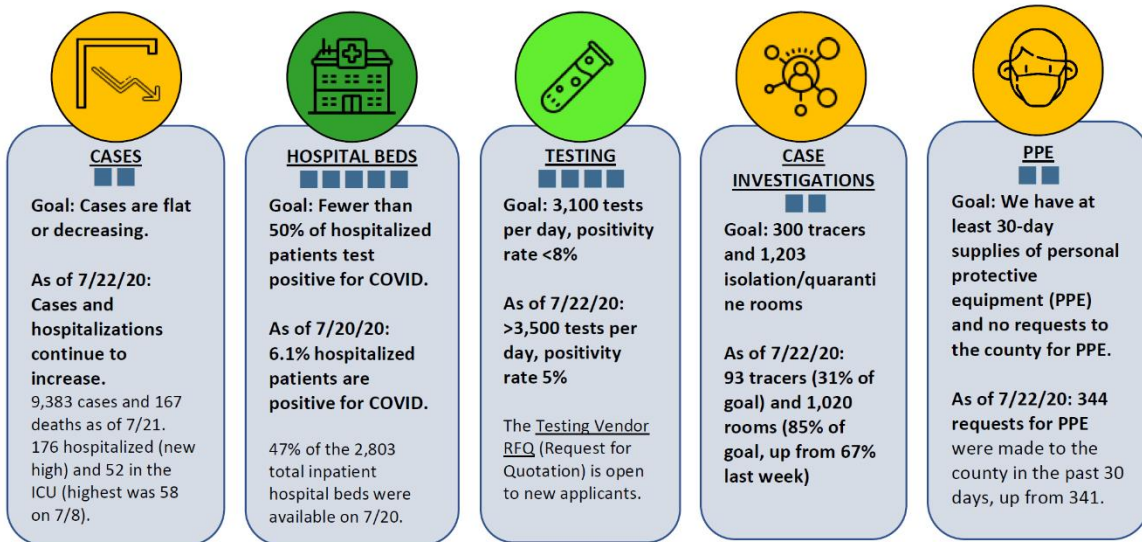
## Updates for Alameda County in the main COVID strategy areas:

The rate of new cases and hospitalizations have continued to increase in the past couple of weeks, again reaching new highs on July 20. We are conducting over 3,500 tests per day, exceeding the goal of conducting 3,100 tests per day. The percentage of people hospitalized and COVID-19 positive has increased to 6.3% this week compared to 3.3% a month ago but is still well below the goal of 50%. We have sufficient hospital capacity with 47% of our inpatient beds and 100% of our surge beds available. While we don't have a shortage of personal protective equipment (PPE), only 23% of hospitals report having more than 14 days of PPE on-hand, and health facilities continue to make significant requests for PPE from the county. All indicators remain at the same status levels this week compared to last week.

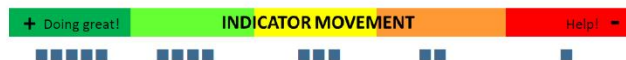


### Alameda County COVID-19 Indicators: July 22, 2020

How we are assessing progress on containing COVID-19



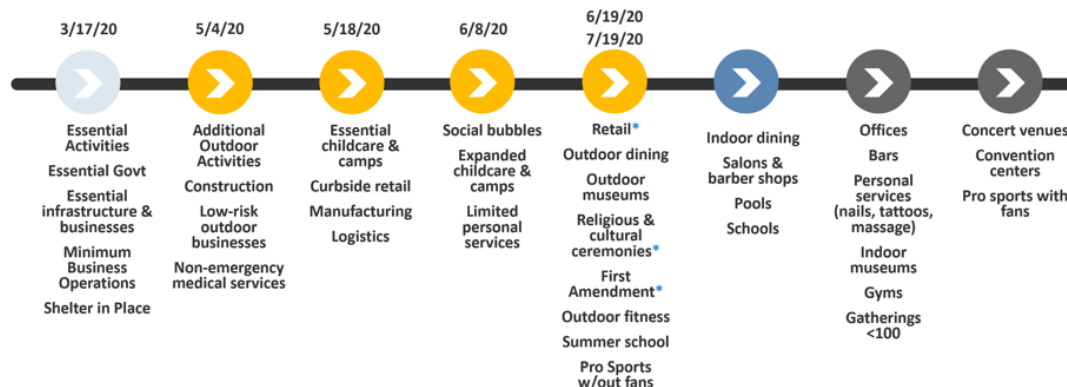
Infographic by Sophy S. Wong, MD for EBGTZ; Icons made by Icons8.com and Flaticon.com



## Alameda County Reopening Plan

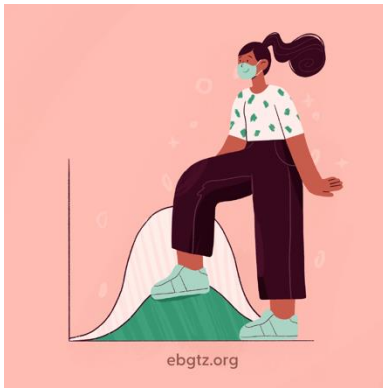
Added to the State's Monitoring List on 7.12.20, activities with [\\* subject to restrictions per State Orders](#)

Variance approved on 7.15.20, and reopening remains paused due to continued elevated disease transmission and State restrictions



Face Coverings, Physical Distancing, and Site Specific Protection Plans Required – Stay in your Community

## Trends in Cases and Hospitalizations



Case and hospitalization rates have continued to increase over the past week with new highs reported on July 22. Our goal is for cases to be flat or decreasing. This indicator remains a two.

- As of July 22, there were 9,643 reported cases of COVID-19 and 171 deaths. This represents 10.4 deaths per 100,000 people, compared to 20.2 deaths per 100,000 people in California State overall.
- As of July 20, there were 103.2 new cases per 100,000 people over 14 days, which is above the 100-case threshold for being on the State Monitoring List. The goal is to have 24 or fewer cases.
- As of July 21, there were 176 hospitalized patients (new high), including 52 ICU patients (highest was 58 on 7/15) with confirmed COVID.

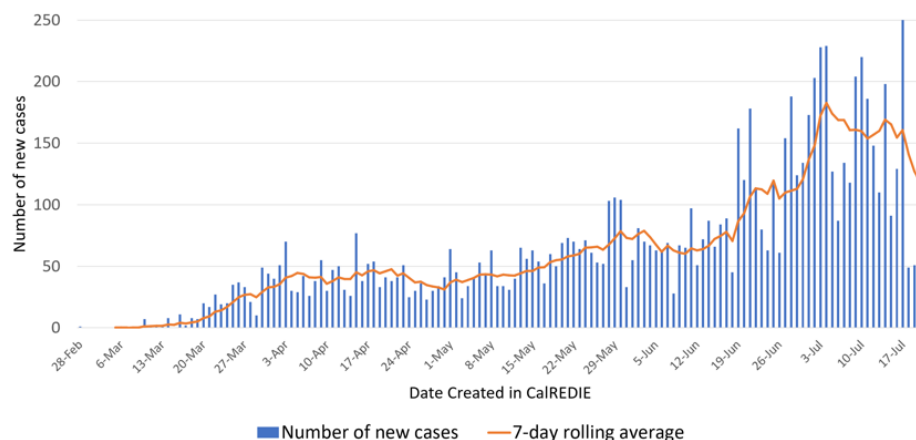
The county-level transmission rate ( $R_e$ , or effective reproductive number) as of July 19 is estimated to be 1.1 using a composite of 6 models on the California COVID Assessment Tool (Cal-CAT). California state's  $R_e$  is 1.06. This means each person in Alameda County who has COVID-19 on average transmits the virus to 1.1 other people. When the  $R_e$  is greater than 1, cases increase in an exponential fashion.

The Alameda County  $R_e$  increased in late June to 1.22 and has slowly trended down over the past 2 weeks to the current  $R_e$  of 1.1, which is promising. However, if the  $R_e$  remains 1.1, we are predicted to have 577 hospitalizations on August 21, which is a 3.4-fold increase of our current hospitalizations of 171. Our goal is to get the transmission rate ( $R_e$ ) to less than 1.

In order to get the transmission rate to less than 1, we need to improve our use of preventive measures, including everyone wearing face coverings and maintaining distance in all settings outside our households. Please help us get the message out to communities with the Mask On, Alameda County campaign.

The comprehensive Alameda County COVID-19 strategy document can be [downloaded here](#).

New Alameda County COVID-19 Cases, 2020



Alameda County  
Health Care Services Agency



Alameda County Public Health Department  
Celebrating Healthy People in Healthy Communities

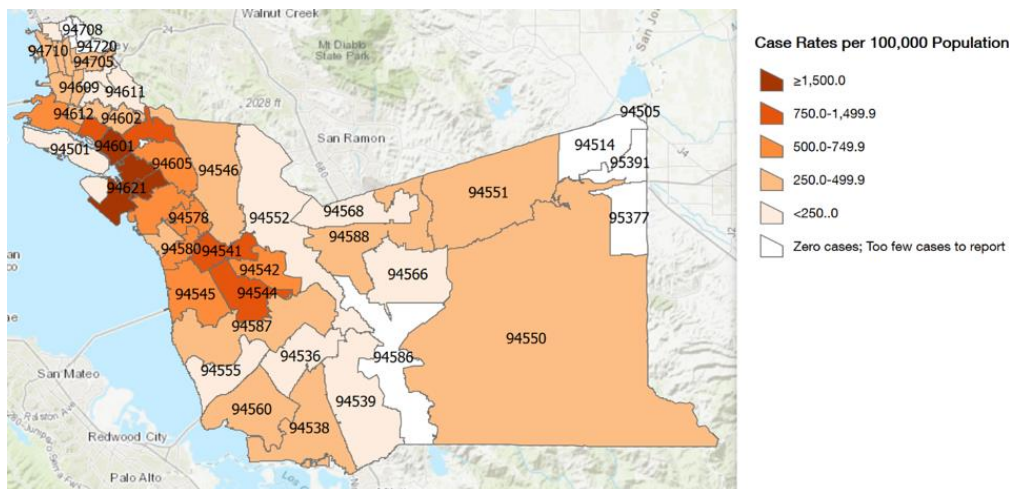
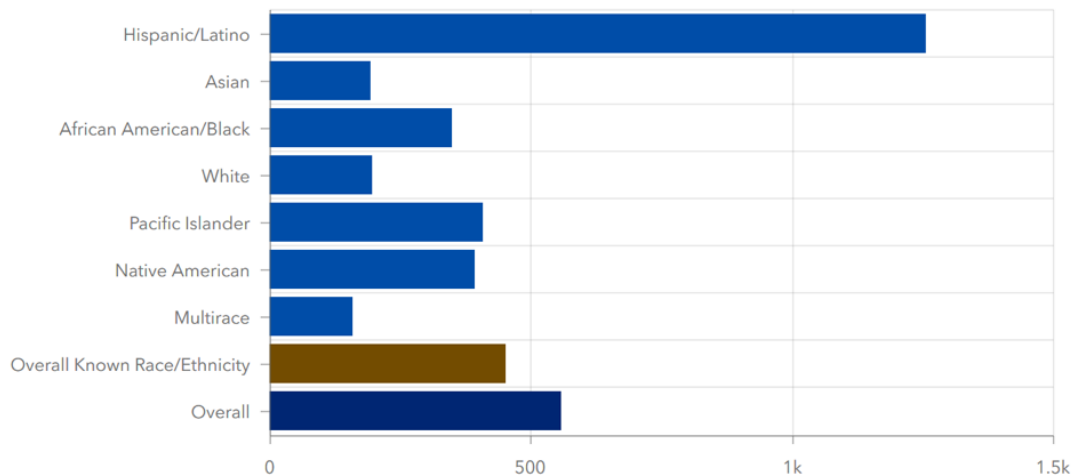
## Disparities and Equity

Updated race and ethnicity data as of July 21 show widening disparities. The COVID-19 diagnosis rate among Latinx people is now 6.7 times the COVID-19 case rate of Whites, up from 6.4 times last week. Black/African American people have 1.8 times the case rate of Whites. The death rate among Black/African Americans has increased to 2.4 times the death rate of Whites, compared to 2.2 times a week ago. Native Americans have 2 times the rate of cases compared to Whites. Pacific Islanders have 2.1 times the case rate compared to Whites.

Positivity rates remain highest for people living in the Fruitvale, East Oakland/Coliseum, and Hayward zip codes, showing a very disproportionate impact in communities of color.

These data continue show the persistent and urgent need to address racial and socioeconomic inequities in workplace safety, education and access to precautions, rapid access to testing, safe isolation, quarantine and medical care.

Alameda County Total Case Rates per 100,000 Population by Race/Ethnicity



## Testing

We are conducting over 3,500 tests per day and have exceeded our goal of 3,100 tests per day. The positivity rate remains at 5%, though still within our goal of having an 8% or lower positivity rate. This indicator remains a four.

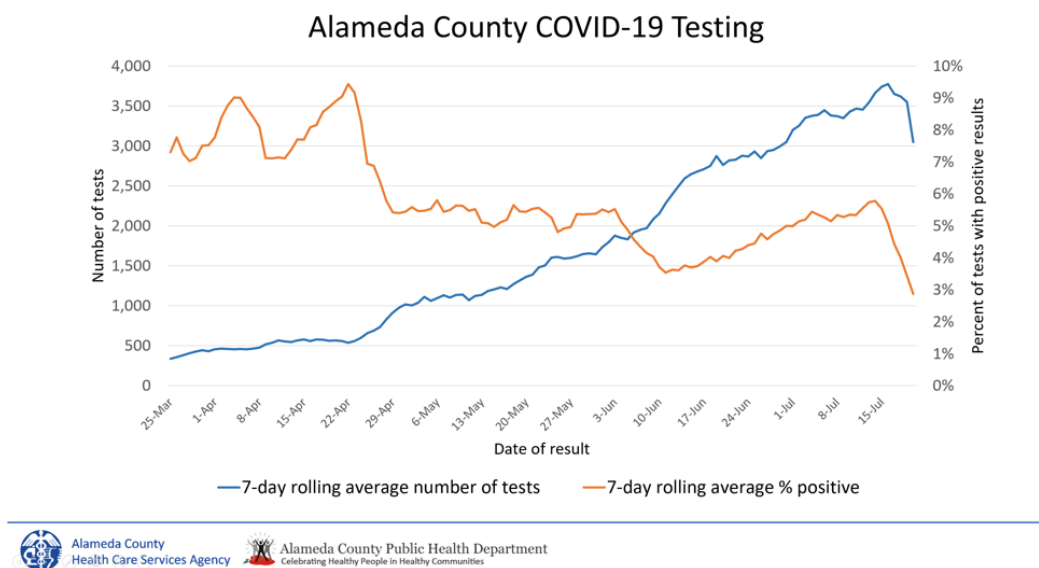
A [new testing data dashboard](#) has been added to the Public Health Department's COVID-19 website, providing more detailed data on testing, including by zip code and over time.

Updated testing locations and appointment links are posted the [COVID-19 testing webpage](#) and searchable in this [interactive map of COVID-19 services](#) (click to filter for COVID-19 testing). 10 sites offer free tests for any community member with symptoms and all essential workers, people who have protested, and those at higher medical risk regardless of symptoms.

Providers please:

- submit full names, addresses, dates of birth and phone numbers for all positive case reports,
- distribute [isolation orders](#) for all people getting tested,
- remind people to stay home until they get test results, and
- pick up and return calls from the Health Department.

If your facility needs COVID-related supplies, please complete these forms to [request PPE](#) and [request testing supplies](#).



## Case and Contact Investigations, Isolation and Quarantine

Alameda County currently has 93 case investigators and contact tracers with a goal to reach 300 in the fall. Another 40 contact tracers are undergoing training, and more will be joining through new contracts soon. This indicator remains a two.

## CONTACT TRACING SLOWS THE SPREAD OF COVID-19



La Clínica, West Oakland Health Center, Roots Community Health center and Tiburcio Vasquez Health Center now have immediate action contracts to provide support for case investigations and contact tracing in the communities with the highest rates of COVID-19. Listening sessions were held last week to inform the Contact Tracing Request for Proposals (RFP), which we expect to release in early August.

**People interested in volunteering** can email [phvolunteers@acgov.org](mailto:phvolunteers@acgov.org) to be placed on a log for when volunteer opportunities become available. Health care personnel interested in volunteering can register in the [COVID-19 Medical Health Personnel Database](#) and the [California Health Corps System](#) (formerly DHV) and sign up for the [Alameda County Unit](#) under “County Organizations.”

The CDC has updated its guidance to ***not recommend re-testing to release patients from isolation*** in community settings, hospital settings, and for health care personnel to return to work. A time- and symptom-based strategy is recommended instead. This is because people continue to shed detectable SARS-CoV-2 RNA (resulting in a positive test) but are no longer infectious.

**Project Roomkey hotel rooms** continue to expand and provide isolation/quarantine housing for people living in crowded conditions or are experiencing. There are currently 810 rooms in operation. 1,020 total rooms with 3 new properties will be open this week, which is 85% towards our goal of 1,203 rooms. Another 226 rooms are expected to open in the coming month.

Alameda County is participating in the Governor’s 100-day challenge to permanently house 400 people through Project Roomkey. We have already supported 60 Project Roomkey residents to move into stable permanent housing.

## Hospital Capacity and Surge Planning

**As of July 21, our hospital capacity indicators are:**

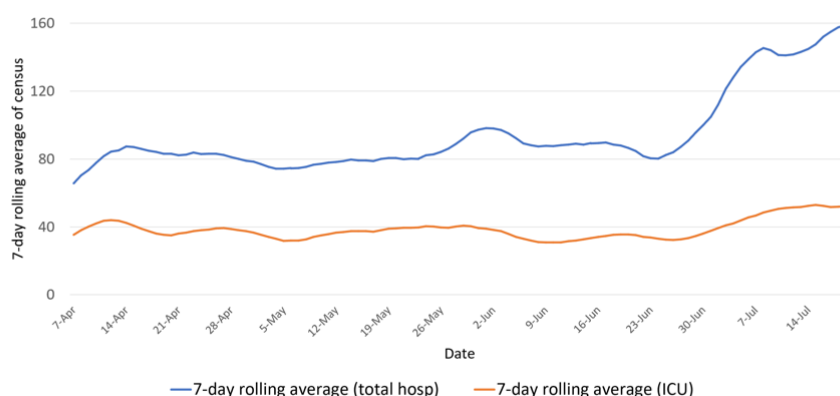
- 6.3% of the patients in hospital beds across Alameda County were confirmed COVID-19 positive, higher than the 3.3% a month ago but still well within our goal of 50% or less.
- 12% of the patients in ICU beds were confirmed COVID-19 positive.
- 46% of the 2,804 total inpatient hospital beds were available, and 100% of the 908 surge beds were available. This indicator remains a five.
- 23% of hospitals report having more than 14 days of personal protective equipment (PPE) on-hand, below the State Monitoring goal of more than 90% hospitals.
- There were 344 requests for PPE from the county in the last 30 days, and our goal is zero requests. This indicator remains a two.

California State has released the final 8-page **surge planning document**, which can be [downloaded here](#).

The Medical Board of California issued a [letter on mental health and suicide prevention guidance](#) with tools and resources for health care providers.

Alameda County Public Health Department recommends **all health care staff to wear eye protection** in addition to their facemask to ensure the eyes, nose, and mouth are all protected from exposure to respiratory secretions during all patient care encounters, in line with recent CDC updates.

COVID-19 Patients Hospitalized in Alameda County, 7-day rolling average, 2020



Alameda County  
Health Care Services Agency



Alameda County Public Health Department  
Celebrating Healthy People in Healthy Communities

## TOP LINKS:

- **HIV:** [FAQs for people living with HIV \(PLWH\)](#) and [Preguntas Frecuentes in Spanish](#), [Guidance for PLWH \(CDC\)](#), [Guidance for HIV providers](#)
- **HIV services during COVID-19:** [Click here for Contra Costa HIV services](#) and [see our online directory for Alameda County HIV services](#).
- **Key Communities:** [Harm Reduction Coalition](#), [Immigrants Rising](#), [Protecting Immigrant Families: Public Charge](#), [Healthcare for the Homeless](#)
- **COVID Testing, Food, Shelters:** [Alameda County COVID testing and services](#) and [isolation housing](#), [Contra Costa County COVID testing](#)
- **COVID PPE, staffing or testing supplies:** [Alameda County EMS— request PPE](#), [request staffing](#) or [request testing supplies](#).
- **Public Health Department Updates:** [Alameda County](#), [Contra Costa County](#), [Solano County](#), [California State](#)
- **COVID Data:** [Alameda County](#), [Contra Costa County](#), [Solano County](#), [California State](#), [California \(SF Chronicle\)](#), [National/Global \(JHU\)](#), [By Race](#)
- **DIY Face Coverings and Masks:** [CDC \(easy no-sew\)](#), [Maker Mask \(sewn, science-based\)](#), [Olson Mask \(sewn\)](#)

## ALAMEDA COUNTY GUIDANCE:

Download links for **Alameda County community or business** guidance on: [Face coverings](#), [social bubbles](#), [childcare and camps for all children](#), [graduations](#), [vehicular gatherings](#), [construction](#), [curbside retail pickups](#), [manufacturing and warehousing](#), [personal services](#).

Download links for **Alameda County clinical guidance** on: [COVID-19 testing](#), [isolation orders in 7 languages](#) for all people getting tested, [reporting COVID-19 cases](#), [Project Roomkey isolation housing](#), [home health agencies](#), [remdesivir allocations](#), [routine vaccines](#), reporting pediatric [Multisystem Inflammatory Syndrome](#), [resumption of non-urgent medical services](#), and [testing in Skilled Nursing Facilities](#).

If your organization is in Alameda County and needs COVID-related supplies or staffing, please go to the [Emergency Medical Services website](#) to [request PPE](#), [request staffing](#) and [request testing supplies](#).