

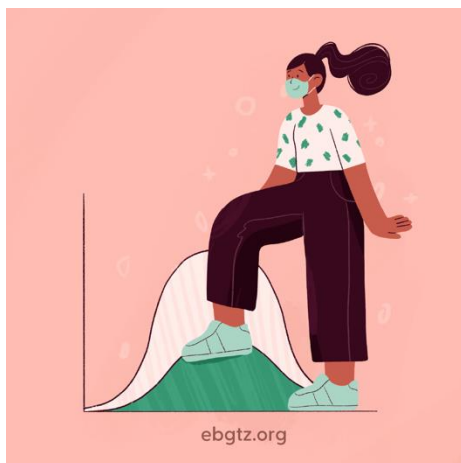


HIV & COVID-19 weekly updates: July 13-17, 2020

The **AIDS 2020 Virtual conference** was held last week, bringing thousands together from all over the world. Much of the content from AIDS 2020 Virtual is available online. You can watch the AIDS 2020 [Virtual Opening Series](#), [Virtual Daily Studio Show](#), the [Virtual Global Village + Showcase](#), [Virtual Closing](#) and check out many other resources [here](#). Additional talks that were highly recommended to us were: [Greg Millet](#) and [Celeste Watkins-Hayes](#)' opening plenary talks.

In addition to the new HIV research unveiled this week, the **IAS virtual COVID-19 Conference** (10-11 July) presented evidence that in utero vertical transmission of SARS-CoV-2 is possible, and data on sofosbuvir and daclatasvir as a potential treatment for COVID-19. Also, there were insights from a large COVID-19 testing campaign in the US, and data on characteristics associated with clinical improvement and mortality in patients with severe COVID-19 treated with remdesivir. Watch the sessions featuring Anthony Fauci, Bill Gates, Tedros Adhanom Ghebreyesus, Jane Goodall, Mary Robinson, and more [here](#).

The Madrid study on COVID-19 risks and outcomes among PLWH published in *Annals of Internal Medicine* (Del Amo et al) found that people living with HIV in Madrid did not have higher risk for COVID-19 compared to the general population, and very interestingly found that people taking TDF had lower risk and reduced mortality compared to people taking TAF. The study's findings may be due to differences in comorbidities of people using TDF vs TAF, so we don't have enough info yet to switch people to TDF-containing regimens.



On July 12, Alameda County joined Contra Costa and Solano Counties on the [CA State Monitoring List](#) for increasing COVID-19 case rates. The recent increases in cases in Alameda County are thought to be connected to social gatherings without masks and increased transmissions among health care workers. Contra Costa County has a concerning increase in hospitalization rates. Solano County is reporting large outbreaks among farm workers and from social gatherings.

The county-level transmission rate (R_e , or effective reproductive number) as of July 12 is estimated to be 1.09 in Alameda County, 1.18 in Contra Costa County, and 1.14 in Solano County using a composite of 6 models on the [California COVID Assessment Tool \(Cal-CAT\)](#).

California state's R_e is also 1.09. This means each person who has COVID-19 will on average transmit the virus to 1.09 other people. When the R_e is greater than 1, cases increase in an exponential fashion. Our goal is to get the transmission rate (R_e) to less than 1.

To flatten the curve, please model and support community members to use combination prevention with face coverings, distancing, eye protection, hand hygiene, testing - just like we do with STD/HIV prevention (PrEP, condoms, lube, testing, etc.). Please see the table summarizing prevention strategies. There's more info on our website on [COVID-19 harm reduction](#), [face coverings](#), and a [video](#) and slides on the science behind face masks.

Effectiveness of COVID harm reduction strategies

Strategy	% reduction
1. Masking	60-95%
2. Distancing	53-88%
3. Eye protection	78%
4. Hand hygiene	28-45%
5. Case isolation	33%
6. Contact tracing	10-20%

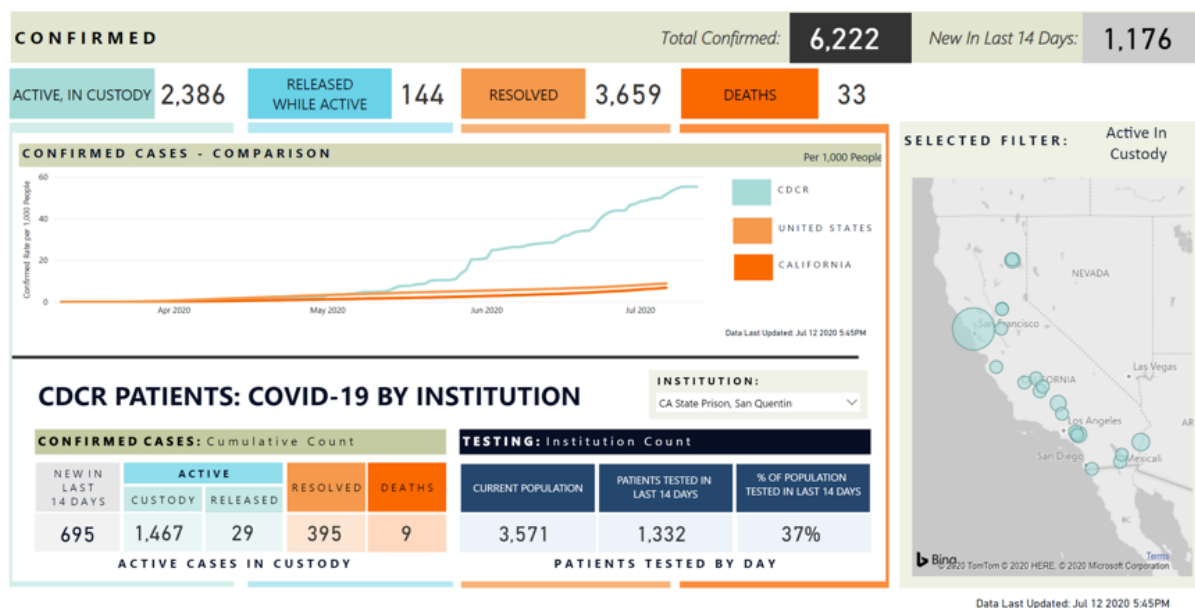


Data compiled by Sophy S. Wong, MD
Icons by Freepik and Srip on Flaticon.com
Please see [EBGTZ.org/resources](#) for the complete list of sources for this table.

Avoid methanol-based hand sanitizers: The FDA has issued a warning on methanol-based hand sanitizers. Methanol is toxic when absorbed by the skin or swallowed.

Outbreaks in California state prisons continue to devastate inmates and staff, with 2,037 confirmed cases at San Quentin, or 57% of the population as of July 15, 2020. Some eligible inmates within 180 days of release returning to the East Bay. 57 early release probationers are expected to arrive in Alameda County before the end of 2020, and about 25 natural release parolees are expected per month. Dr. Kathleen Clanon reports that those who have arrived so far are doing well at the Project Roomkey hotels during their quarantine period. Resources for those serving people post-release are located on UCSF Amend's COVID-19 webpage.

CDCR PATIENTS: CONFIRMED COVID-19 AND OUTCOMES



19

Clinical organizations interested in the Alameda County COVID-19 Integrated Case Investigation/Contact Tracing (CI/CT) Expansion Request for Proposal (RFP) are invited to attend a feedback session on Thursday, July 16 (tomorrow!). Another session on the RFP for non-clinical CBOs will be held separately.

Uninsured? Have Medi-Cal, but no regular doctor? Medi-Nurse can help.

Think you might have COVID-19?
Call the Medi-Nurse line:
1-877-409-9052

HCS

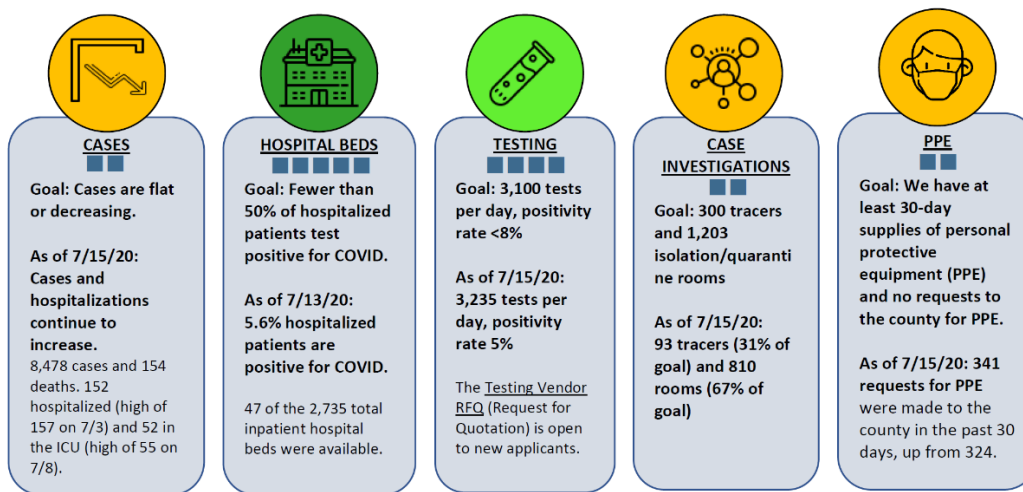
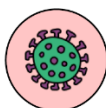
The California Department of Health Care Services launched a free, **24/7 Medi-Nurse COVID-19 advice line**: (877) 409-9052 to answer questions about COVID-19 for anyone who doesn't have insurance, or has Medi-Cal but doesn't have a regular provider for their care.

The London School for Hygiene and Tropical Medicine (LSHTM) is conducting a **15-30 minute survey on Identifying and mitigating the impact of COVID-19 on TB and HIV programmes**. All HIV and TB service providers (medical and especially non-medical) are encouraged to complete the survey.

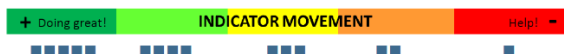
You can always go to the [EBGTZ website](#) for the detailed updates (usually posted Wednesday evenings). Please follow and share our Instagram, Facebook and Twitter accounts.

This chart will be updated weekly with information reported by the county officials. Last updated July 10, 2020 10:40 a.m.

County	Cases	Hospitals			Testing	Tracing		PPE
	Flat or decreasing	Counts flat or decreasing	Capacity below 50%	Hospitalizations over past two weeks	Tests per 100k people per day	Goal	Percent of cases	30-day supply
Alameda	✗	✗	✓			✗	75%	✗
Contra Costa	✗	✗	✓			✗	29%	✓
Marin	✗	✗	✓			✗	70%* as of June 15	✓
San Francisco	✗	✗	✓			✗	85%	✗
San Mateo	✗	✗	✓			?	Cannot calculate metric%	✓ 14-day supply
Santa Clara	✗	✗	✓			✗	75%	✗



Infographic by Sonny S. Wong, MD for EBGTZ: Icons made by Icons8.com and Flaticon.com



Updates for Alameda County:

Progress on COVID-19 Indicators

The rate of new cases and hospitalizations have continued to increase in the last week, again reaching new highs on July 14. Testing has exceeded the goal of conducting 3,100 tests per day with 3,235 tests conducted per day. The percentage of people hospitalized and COVID-19 positive has increased at 5.7% this week compared to 3.7% three weeks ago and is still well below the goal of 50%. The personal protective equipment (PPE) indicator remains a two due to increased requests and demands corresponding with the increase in cases. All indicators remain at the same status levels this week compared to last week.

Alameda County was placed on the [California State Data Monitoring List](#) on [July 12](#) due to sustained increases in COVID-19 cases with more than 100 new cases per 100,000 people per day. The Monitoring List includes 31 other counties and identifies counties that are not meeting statewide benchmarks around case rates, hospitalizations and/or hospital capacity. Being placed on this list may require counties to reclose previously open sectors. For Alameda County, this means that places of worship are now only allowed to hold outdoor services, and indoor malls are required to close as of July 15.

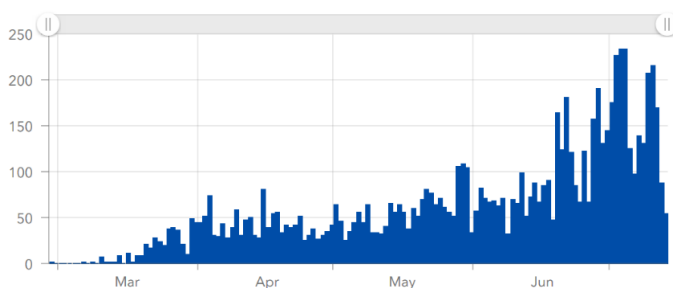
On July 9, the State issued guidance prohibiting outdoor dining in counties without variance attestation. Variance attestation allows the Health Officer to attest to sufficient precautions in place to allow for the opening of additional sectors such as outdoor dining and the Oakland Zoo. [Alameda County's variance attestation was approved](#) by the State on July 15 and allows for outdoor activities at the Oakland Zoo and outdoor dining with stricter guidance around face covering use.

As a reminder, face coverings are required for everyone when outside their home at all times. We have *Mask On Alameda County!* posters available for [download](#) or pickup.

Employers can help stop the spread of COVID-19 by supporting employees' decisions to stay home, and ensuring that they follow the state and local guidelines in implementing [Site-Specific Protection Plans](#).

Trends in Cases and Hospitalizations

Alameda County Total Daily Cases



Case and hospitalization rates have continued to increase over the past week with new highs reported on July 14. Our goal is for cases to be flat or decreasing. This indicator remains a two.

- As of July 15, there were 8,478 reported cases of COVID-19 and 154 deaths. This represents 9.2 deaths per 100,000 people, compared to 18.5 deaths per 100,000 people in California State overall.
- As of July 14, there were 158 hospitalized patients (new high), including 56 ICU patients (new high) with confirmed COVID.

The county-level transmission rate (R_e , or effective reproductive number) as of July 12 is estimated to be 1.09 using a composite of 6 models on the [California COVID Assessment Tool \(Cal-CAT\)](#). California state's R_e is also 1.09. This means each person who has COVID-19 will on average transmit the virus to 1.09 other people. When the R_e is greater than 1, cases increase in an exponential fashion.

The Alameda County R_e increased in late June and is now trending down a bit, leading to more favorable hospitalization predictions. Our goal is to get the transmission rate (R_e) to less than 1.

In order to get the transmission rate to less than 1, we need to have improvements in the use of preventive measures, including universal face coverings and distancing modifications in all settings.

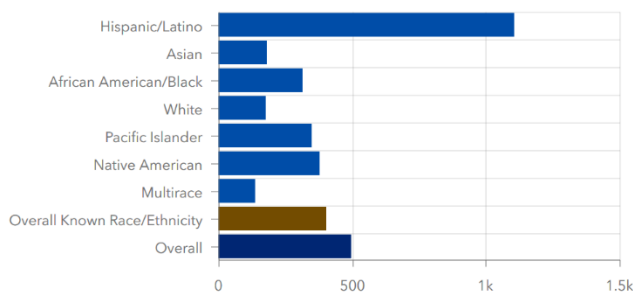
Disparities and Equity

Updated race and ethnicity data as of July 15 show persistent and significant disparities. 1.1% of Latinx people in Alameda County have been diagnosed with COVID-19, which is 6.4 times the COVID-19 case rate of Whites. Black/African American people have almost twice the case rate and has increased to 2.2 times the death rate of Whites, compared to 2.1 times a week ago. Native Americans have 2.2 times the rate of cases compared to Whites. Pacific Islanders have 2 times the case rate compared to Whites.

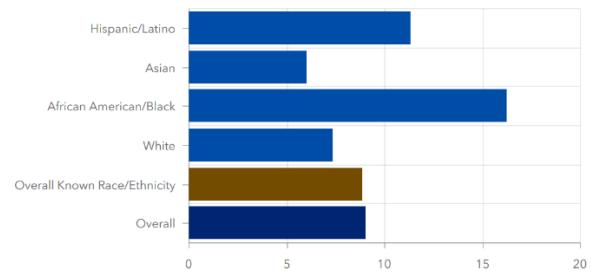
These data continue show the persistent and urgent need to address racial and socioeconomic inequities in workplace safety, education and access to precautions, rapid access to testing, safe isolation, quarantine and medical care.

By age, most cases are among people ages 18 to 40, which may be due to those who are working in essential sectors and may be living with more people in their households. Deaths remain primarily in adults after the age of 50.

Alameda County Total Case Rates per 100,000 Population by Race/Ethnicity



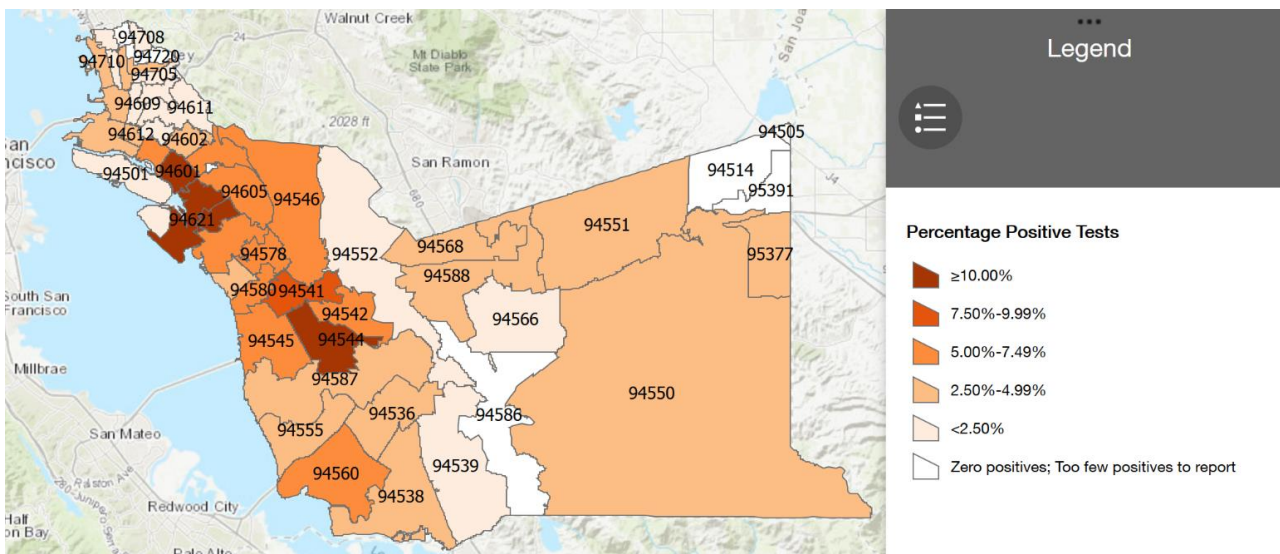
Alameda County Total Death Rate per 100,000 by Race/Ethnicity



Testing

We are conducting an average of 3,235 tests per day and have exceeded our goal of 3,100 tests per day. The positivity rate has increased again over the past week to 5%, though still within our goal of having an 8% or lower positivity rate. This indicator remains a four.

Positivity rates have been highest for people living in the 94601 (Fruitvale, 10.4% positivity), 94621, 94603 (Coliseum, 16% and 14.8% positivity) and 94544 (Hayward, 10.5% positivity) zip codes, showing a very disproportionate impact in predominately Latinx and Black/African American communities.



Updated testing locations and appointment links are posted the [COVID-19 testing webpage](#) and searchable in this [interactive map of COVID-19 services](#) (click to filter for COVID-19 testing). 10 sites offer free tests for any community member with symptoms and all essential workers, people who have protested, and those at higher medical risk regardless of symptoms.

Providers please:

- submit full names, addresses, dates of birth and phone numbers for all positive case reports,
- distribute [isolation orders](#) for all people getting tested,
- remind people to stay home until they get test results, and
- pick up and return calls from the Health Department.

If your facility needs COVID-related supplies, please complete these forms to [request PPE](#) and [request testing supplies](#).

Case and Contact Investigations, Isolation and Quarantine

Alameda County currently has 93 case investigators and contact tracers with a goal to reach 300 in the fall. This indicator remains a two.

New community-based organizations have partnered with Alameda County to provide additional case investigators and contact tracers. La Clínica, West Oakland Health Center, Roots Community Health center and Tiburcio Vasquez Health Center are among the first organizations to provide these services through immediate action contracts.

Providers are encouraged to refer people living in crowded conditions or experiencing homelessness who need isolation/quarantine housing to **Project Roomkey hotels**. There are currently 810 rooms in operation, which is 67% of our goal of 1,203 rooms. Another 436 rooms are in planning stages across the county.

New field-based mental health crisis intervention teams (Community Assessment and Transport Teams, or CATT) including Emergency Medical Technicians (EMTs) and mental health clinicians will soon be available. They will first be deployed in Hayward and San Leandro, then expand to Oakland and Fremont.

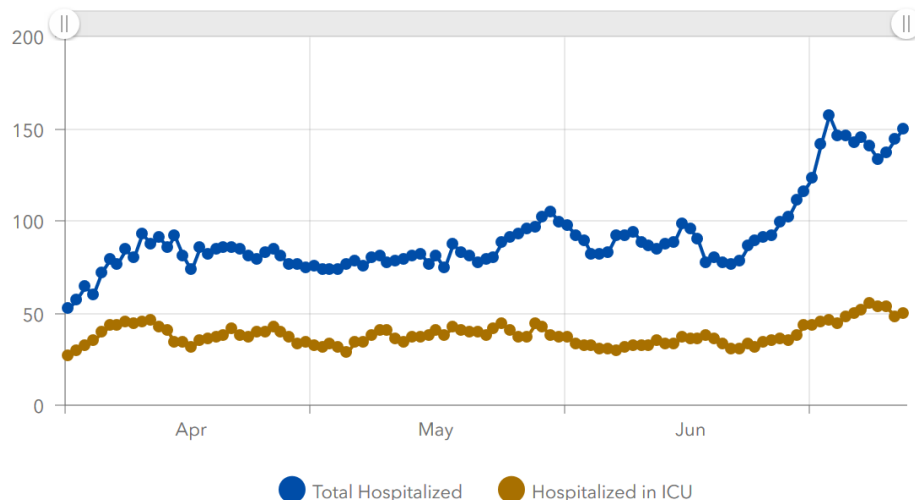
Hospital Capacity and Surge Planning

As of July 15, our hospital capacity indicators are:

- 5.7% of the patients in hospital beds across Alameda County were confirmed COVID-19 positive, which is within our goal of 50% or less. This indicator remains a five.
- 13% of the patients in ICU beds were confirmed COVID-19 positive.
- 47% of the 2,760 total inpatient hospital beds were available, and 100% of the 934 surge beds were available.
- There were 341 requests for personal protective equipment (PPE) from the county in the last 30 days, and our goal is zero requests. This indicator remains a two.

California State has released an 8-page document around surge planning, which can be [downloaded here](#). Alameda County will be reaching out to hospitals to review the guidance and understand everyone's surge plans.

Alameda County Total COVID-19 Hospitalizations



TOP LINKS:

- **HIV:** [FAQs for people living with HIV \(PLWH\)](#) and [Preguntas Frecuentes in Spanish](#), [Guidance for PLWH \(CDC\)](#), [Guidance for HIV providers](#)
- **HIV services during COVID-19:** [Click here for Contra Costa HIV services](#) and [see our online directory for Alameda County HIV services](#).
- **Key Communities:** [Harm Reduction Coalition](#), [Immigrants Rising](#), [Protecting Immigrant Families: Public Charge](#), [Healthcare for the Homeless](#)
- **COVID Testing, Food, Shelters:** [Alameda County COVID testing and services](#) and [isolation housing](#), [Contra Costa County COVID testing](#)
- **COVID PPE, staffing or testing supplies:** [Alameda County EMS– request PPE](#), [request staffing](#) or [request testing supplies](#).
- **Public Health Department Updates:** [Alameda County](#), [Contra Costa County](#), [Solano County](#), [California State](#)
- **COVID Data:** [Alameda County](#), [Contra Costa County](#), [Solano County](#), [California State](#), [California \(SF Chronicle\)](#), [National/Global \(JHU\)](#), [By Race](#)
- **DIY Face Coverings and Masks:** [CDC \(easy no-sew\)](#), [Maker Mask \(sewn, science-based\)](#), [Olson Mask \(sewn\)](#)

ALAMEDA COUNTY GUIDANCE:

Download links for **Alameda County community or business** guidance on: [Face coverings](#), [social bubbles](#), [childcare and camps for all children](#), [graduations](#), [vehicular gatherings](#), [construction](#), [curbside retail pickups](#), [manufacturing and warehousing](#), [personal services](#).

Download links for **Alameda County clinical guidance** on: [COVID-19 testing](#), [isolation orders in 7 languages](#) for all people getting tested, [reporting COVID-19 cases](#), [Project Roomkey isolation housing](#), [home health agencies](#), [remdesivir allocations](#), [routine vaccines](#), [reporting pediatric Multisystem Inflammatory Syndrome](#), [resumption of non-urgent medical services](#), and [testing in Skilled Nursing Facilities](#).

If your organization is in Alameda County and needs COVID-related supplies or staffing, please go to the [Emergency Medical Services website](#) to [request PPE](#), [request staffing](#) and [request testing supplies](#).