



COVID-19 weekly updates: July 6-10, 2020

Dear East Bay Getting to Zero and HIV ACCESS Colleagues,

Please see the complete weekly update on the [EBGTZ website](#) and highlights below.



Many thanks to those who joined us on Tuesday for “**The Low-down on Masking Up for COVID-19**” session. The video recording and slides are already available on our website. Please check out this important information [here](#).

The **AIDS2020 Virtual** conference also started this week, and we hope that you’ve been able to join our East Bay organizations at conference sessions or at the [Global Village](#), which is free and open to the public. We have also compiled the daily digests that have been sent out so far into [this document](#) for your reference. Lastly, the Center for AIDS Research has put together [a folder](#) with important and compelling highlights from the conference so far.

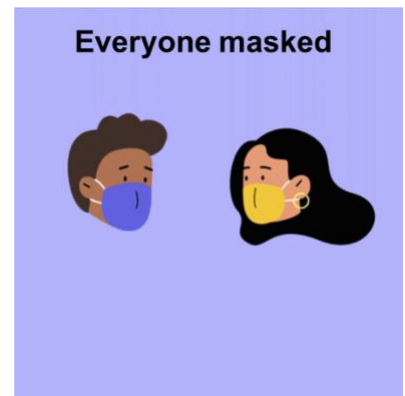


California state and counties have paused reopening plans due to a rapid rise in cases and hospitalizations.

Alameda County reached a new high of 157 hospitalized patients confirmed for COVID-19 on July 3 and a new high of 51 patients in the ICU on July 7. Cases in Alameda County have increased over the month of June with a total of 7,245 cumulative reported cases on July 7. Contra Costa County’s cases increased by 43% in the past week with a total of 4,092 cases.

If cases and hospitalizations continue to increase at the same rate in Alameda County, our hospital bed capacity is projected to be overwhelmed by late August. The current [transmission rate \(Re\)](#) in Alameda County is estimated to be about 1.07 and in Contra Costa County about 1.19. This means each person with COVID-19 on average spreads the virus to 1.07 or 1.19 people.

We need improve our preventive measures to get the Re back down below 1 and keep the case numbers safely manageable. It's more important than ever for everyone to wear face coverings and maintain distance when outside our homes. [Wearing face masks](#) or coverings is one of the simplest and most effective ways to stop the spread of COVID-19. Show love for the community by masking up!



Free COVID testing sites: [Click here for Alameda County](#) and [Contra Costa County](#) testing sites.

Please share this new [job opportunity: Ending the HIV Epidemic program specialist](#) at the Alameda County Public Health Department. Please share with your networks!

You can always go to the [EBGTZ website](#) for the detailed updates (usually posted Wednesday evenings). Please follow and share our [Instagram](#), [Facebook](#) and [Twitter](#) accounts.

Thank you for all that you do for our communities!

Highlighted images from this week's update

- **Bay Area COVID checklist from** [San Francisco Chronicle](#)
- **Alameda County dashboard**

Checklist: How Bay Area counties are measuring progress

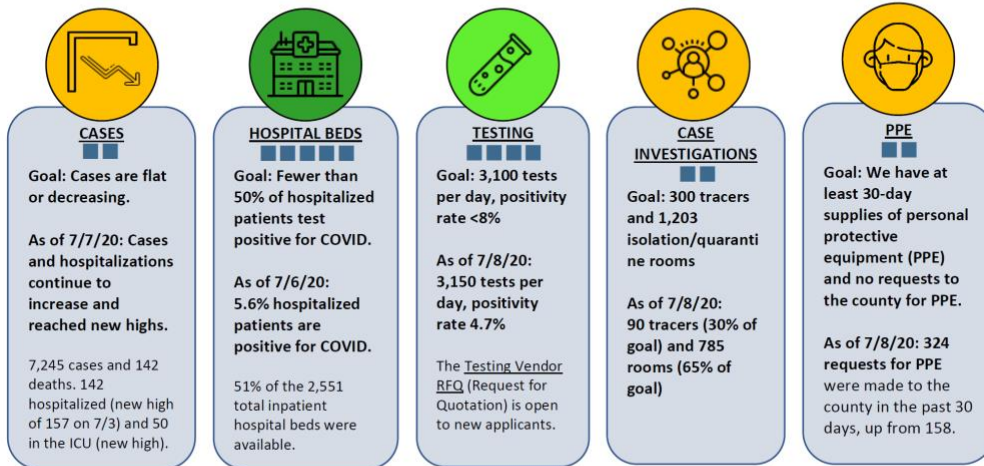
This chart will be updated weekly with information reported by the county officials. Last updated July 3, 2020 11:30 a.m.

County	Cases	Hospitals			Testing	Tracing		PPE
	Flat or decreasing	Counts flat or decreasing	Capacity below 50%	Hospitalizations over past two weeks	Tests per 100k people per day	Goal	Percent of cases	30-day supply
Alameda	✗	✗	✓			✗	75%	✗
Contra Costa	✗	✗	✓			✗	24%	✓
Marin	✗	✗	✓			✗	70%	✓
San Francisco	✗	✗	✓			✗	82%	✗
San Mateo	✗	✗	✓			✓	>90%	✓ [*] 14-day supply
Santa Clara	✗	✗	✓			✓ [*] as of last week	>90%	✗



Alameda County COVID-19 Indicators: July 8, 2020

How we are assessing progress on containing COVID-19



Infographic by Sophy S. Wong, MD for EBGTZ; Icons made by Icons8.com and FlatIcon.com



Updates for Alameda County in the main COVID strategy areas:

Key updates

The State and County have paused reopening plans due to a substantial rise in cases and hospitalizations. If cases and hospitalizations continue to increase at the same rate, our hospital bed capacity is projected to be overwhelmed by late August. Alameda County may be added to the State Monitoring list at any time due to this trend. Alameda County residents should prepare to scale back on some activities, particularly those that include gathering in groups.

All residents are reminded to wear face coverings whenever out in public as a critical and effective way to prevent transmission. The County introduced the “Mask On Alameda County!” campaign over the Fourth of July weekend. More than 5,000 masks were distributed along with education on the importance of:

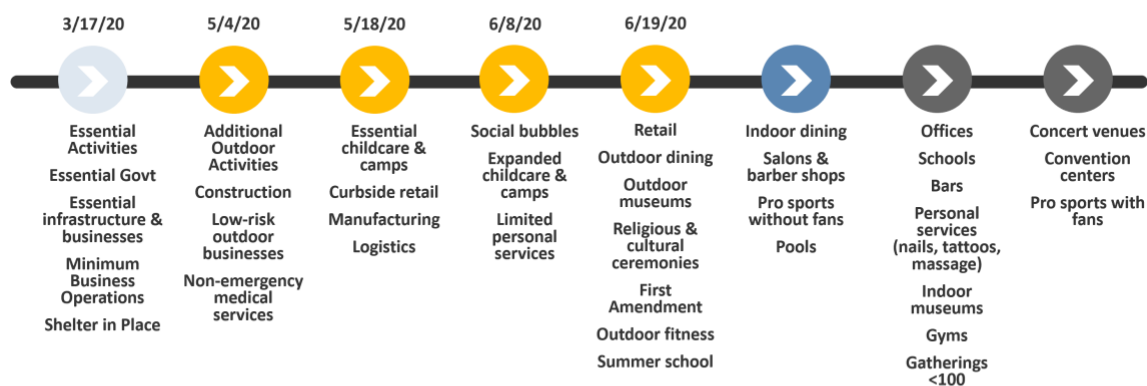
- face coverings,
- maintaining physical distance,
- hand hygiene, and
- staying home when ill to reduce and prevent the spread of COVID-19.

Newly formed “Strike Teams” of state inspectors have been contacting businesses across California and issuing citations to businesses failing to meet the new statewide requirement to wear face coverings.

The California Department of Corrections and Rehabilitation (CDCR) is releasing eligible inmates with 180 days or less remaining on their sentence to parole or probation supervision prior to their original release date. All individuals being released early from a facility with positive cases will isolate/quarantine in one of the Operation Comfort facilities in order to protect the individuals returning, their families and the community at large.

Alameda County Reopening Plan: **Paused 6.29.20**

Movement to next stage contingent upon local COVID-19 indicators



Face Coverings, Physical Distancing, and Site Specific Protection Plans Required – Stay in your Community

Progress on COVID-19 Indicators

The rate of new cases and hospitalizations continued to increase in the last week, including the highest numbers of hospitalized and ICU cases since the beginning of the pandemic. Testing has reached the goal of conducting 3,100 tests per day and expects to exceed the daily goal this week. The percentage of people hospitalized and COVID-19 positive has increased to 4.7% this week compared to 3.7% two weeks ago but is still well below the goal of 50%. The personal protective equipment (PPE) indicator was downgraded from a three to a two due to increased requests and demands corresponding with the increase in cases. The other indicators remain at the same status levels this week compared to last week.

Alameda County COVID-19 Indicators

7.6.2020

Indicator Movement

■ (-) ■ ■ ■ ■ ■ ■ ■ ■ ■ ■ (+)

	Cases & Hospitalizations Flat or Decreasing	Sufficient Hospital & Surge Capacity	Sufficient Testing Capacity	Sufficient Disease Containment	Sufficient PPE
Indicator Status	■ ■	■ ■ ■ ■ ■	■ ■ ■ ■ ■	■ ■	■ ■
Trends & Data	<ul style="list-style-type: none"> 6,887 cases Cases rising in last 7 days 146 cases hospitalized Percent change in average daily number of hospitalized cases 18.2% (goal 0%) 	<ul style="list-style-type: none"> 1,200 (53%) inpatient hospital beds available 868 (100%) surge beds available 	<ul style="list-style-type: none"> Positivity rate: 4.7% (goal <8%) Over 3,150 tests/day (goal 3,100) Tests per day 206 per 100,000 population (Goal >200) 75% of residents w/in 30min drive to site 	<ul style="list-style-type: none"> 90 case investigation & contact tracing staff (goal 300) 785 isolation/quarantine rooms operating (goal 1,203) Special settings teams: LTCF, Outbreaks, Encampments 	<ul style="list-style-type: none"> 152 requests for PPE in last 14 days (goal 0) 324 requests for PPE in last 30 days (goal 0)



Alameda County
Health Care Services Agency



Alameda County Public Health Department
Celebrating Healthy People in Healthy Communities

1

Trends in Cases and Hospitalizations

Case and hospitalization rates have continued to increase over the past week. We reached a new high of 157 hospitalized patients confirmed for COVID-19 on July 3, with the 7-day rolling average of daily hospitalizations increasing 18.2%. On July 7, we also reached a new high of 51 patients in the ICU confirmed for COVID-19 since the start of the pandemic. Our goal is for cases to be flat or decreasing. This indicator remains a two.

- As of July 7, there were 7,245 reported cases of COVID-19 and 142 deaths. This represents 8.5 deaths per 100,000 people, compared to 16.5 deaths per 100,000 people in California State overall.
- As of July 7, there were 145 hospitalized patients (the highest was 157 on 7/3), including 51 ICU patients (a new peak) with confirmed COVID.

The county is analyzing where new cases are coming from. So far, the data suggests that most cases are younger adults in their 20s to 40s with workplace and crowded household transmissions, especially in Latinx communities, as well as from gatherings in which people were not distanced enough and not enough were wearing face coverings.

County-level transmission rates and predictions from the California COVID Assessment Tool (Cal-CAT) and Local Epidemic Modeling for Management & Action (LEMMA) are now both publicly available. Cal-CAT is

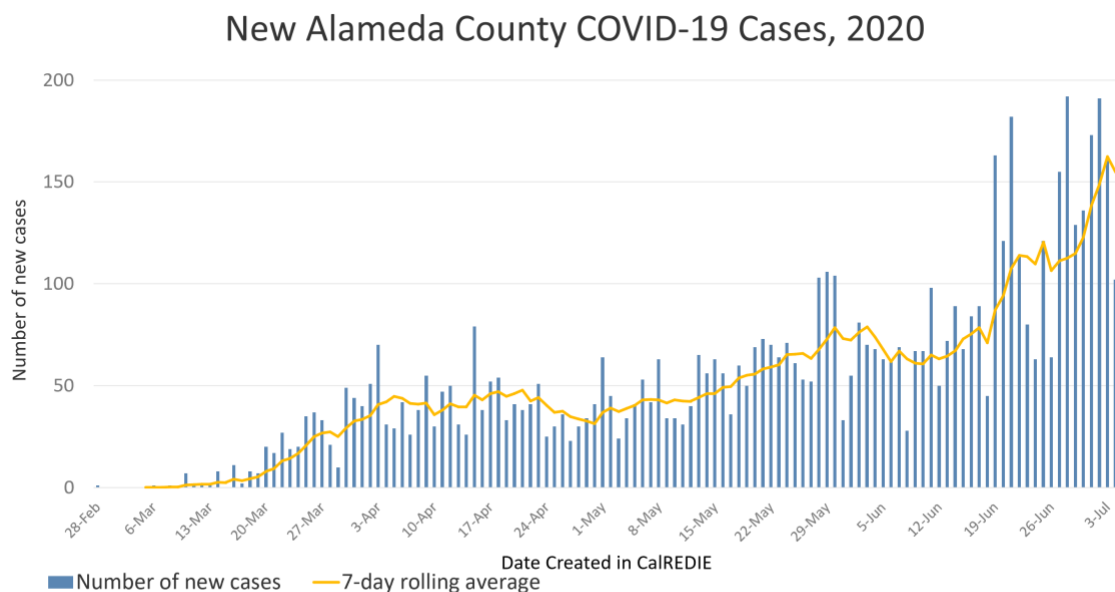
estimating the effective reproduction number (R_e) to be 1.07 for Alameda County, which means each person who is infected will on average infect 1.07 other people. The state-wide R_e is currently estimated to be 1.09. When the R_e is greater than 1, cases increase in an exponential fashion.

The LEMMA model predicts that our current hospital capacity of 2,551 staffed beds will be exceeded by about mid-August if the transmission rate (R_e) remains the same, with a median peak of nearly 5,000 cases on a given day in October. The Cal-CAT Johns Hopkins model shows a similar prediction following a slow reopening schedule, while a faster reopening schedule would overwhelm our hospital capacity within a month.

This data emphasizes the importance of having preventive measures securely in place, such as universal face coverings and distancing modifications, along with a careful resumption or discontinuation of activities based on case and hospitalization trends.

We will need to improve the rate of universal face covering to at least 80% or higher and ensure everyone is following distancing modifications in order to get the R_e back down to 1 or below and flatten this case curve.

Trends of COVID-19 cases in Alameda County:



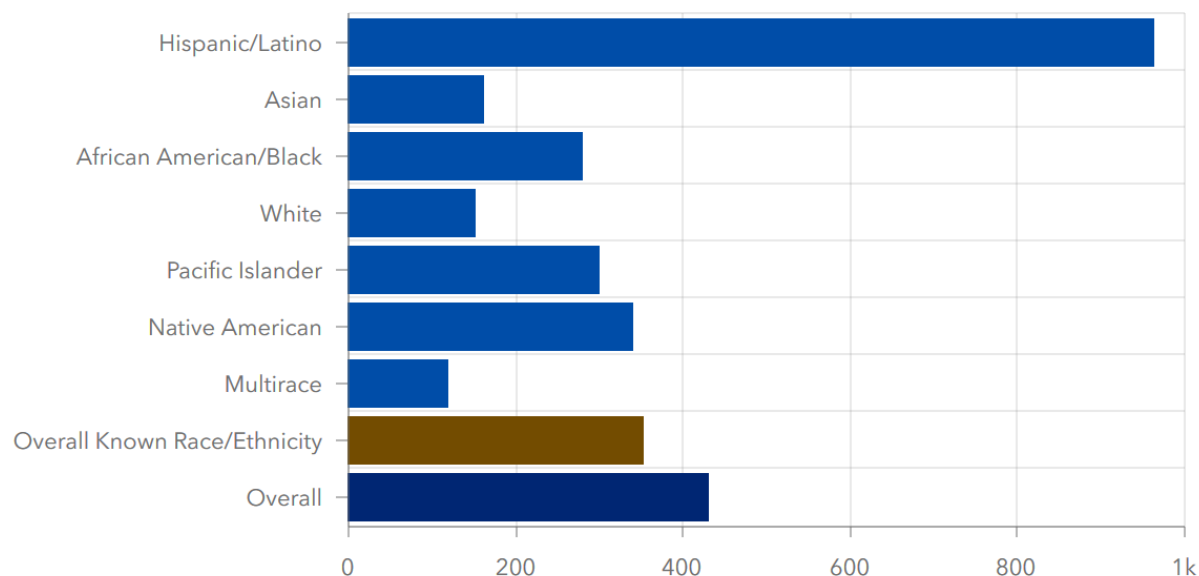
4

Disparities and Equity

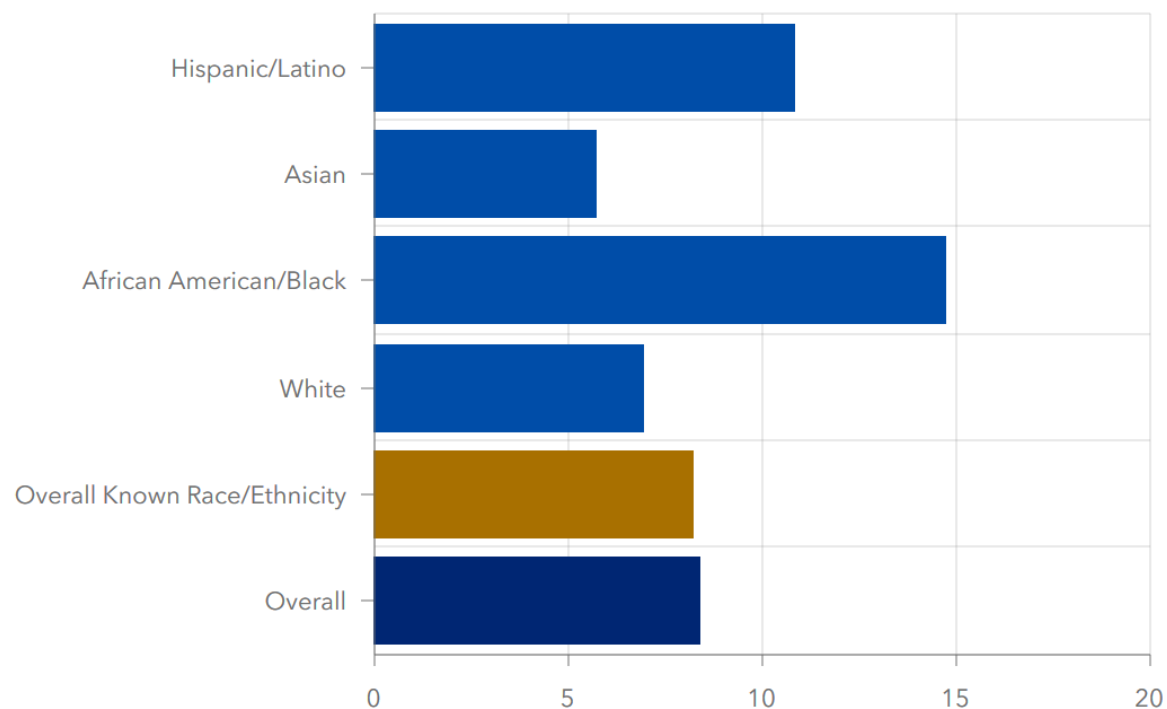
Updated race and ethnicity data as of July 7 show persistent and significant disparities. Latinx people have 6.4 times the rate of COVID-19 diagnoses and 1.6 times the death rate of Whites. Black/African American people have almost twice the case rate and 2.1 times the death rate of Whites. Native Americans have 2.3 times the rate of cases compared to Whites. Pacific Islanders have 2 times the case rate compared to Whites. These data continue to show the persistent and urgent need to address racial and socioeconomic inequities in workplace safety, education and access to precautions, rapid access to testing, safe isolation, quarantine and medical care.

New partnerships with community-based organizations in the Fruitvale District and Hayward have been formed to provide outreach to day laborers and Latinx communities.

Alameda County Total Case Rates per 100,000 Population by Race/Ethnicity



Alameda County Total Death Rate per 100,000 by Race/Ethnicity



Testing

We have reached and exceeded our goal of conducting 3,100 tests per day. The positivity rate has increased over the past month to 4.7%, within our goal of having a 8% or lower positivity rate but still a concerning trend. Much higher positivity rates persist in disproportionately impacted communities. This indicator remains a four.

New testing sites opened in the Fruitvale District last week at Native American Health Center and La Clínica to serve disproportionately impacted communities. Updated testing locations and appointment links are posted the [COVID-19 testing webpage](#) and searchable in this [interactive map of COVID-19](#)

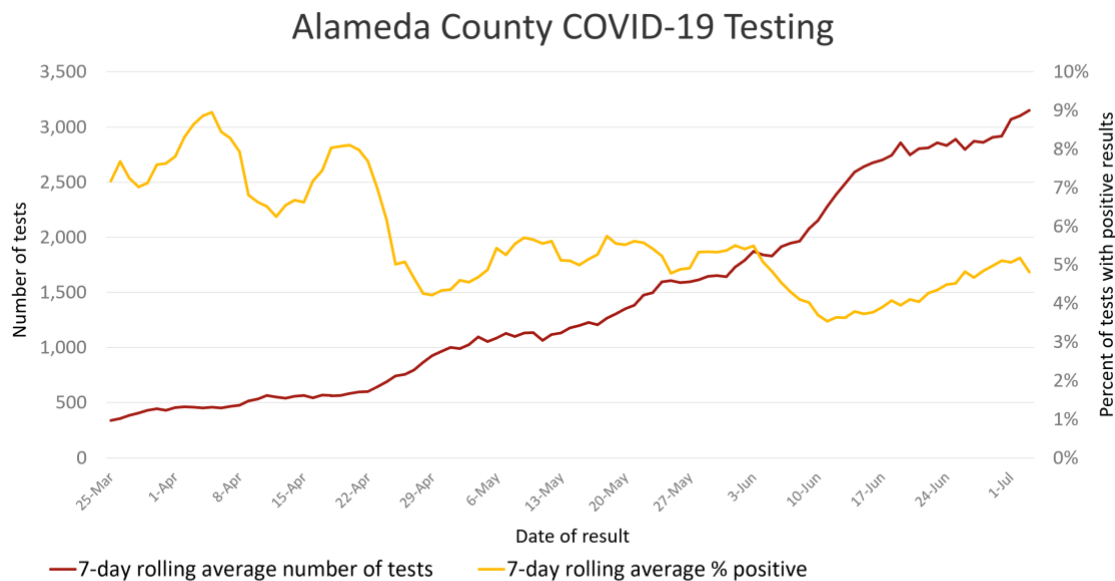
[services](#) (click to filter for COVID-19 testing). 10 sites offer free tests for any community member with symptoms and all essential workers regardless of symptoms.

The [COVID-19 Testing Vendor Pool RFQ](#) (Request for Quotation) continues to be available for clinics, hospitals and organizations to provide COVID testing as part of the Alameda County response to the pandemic. \$20 million has been allocated for this effort, and the goal is to get the testing services funded and set up quickly.

Providers are reminded to:

- submit complete contact information for positive case reports,
- distribute [isolation orders](#) for all people getting tested,
- remind people to stay home until they get test results, and
- pick up and return calls from the Health Department.

If your facility needs COVID-related supplies, please complete these forms to [request PPE](#) and [request testing supplies](#).



Alameda County
Health Care Services Agency



Alameda County Public Health Department
Celebrating Healthy People in Healthy Communities

5

Case and Contact Investigations, Isolation and Quarantine

Alameda County currently has 90 case investigators and contact tracers with a goal to reach 300 in the fall. Case investigators and contact tracers have had difficulty keeping up with the recent increase in the number cases and contacts and have had to prioritize outreach to the highest priority cases. This indicator remains a two.

Last week leases for three additional hotels were approved to provide rooms for the Safer Ground initiative to provide housing for people experiencing homelessness and at risk for severe COVID-19.

Providers are encouraged to refer people living in crowded conditions or experiencing homelessness who need isolation/quarantine housing to **Project Roomkey hotels**. There are currently 785 rooms in operation, which is 65% of our goal of 1,203 rooms.

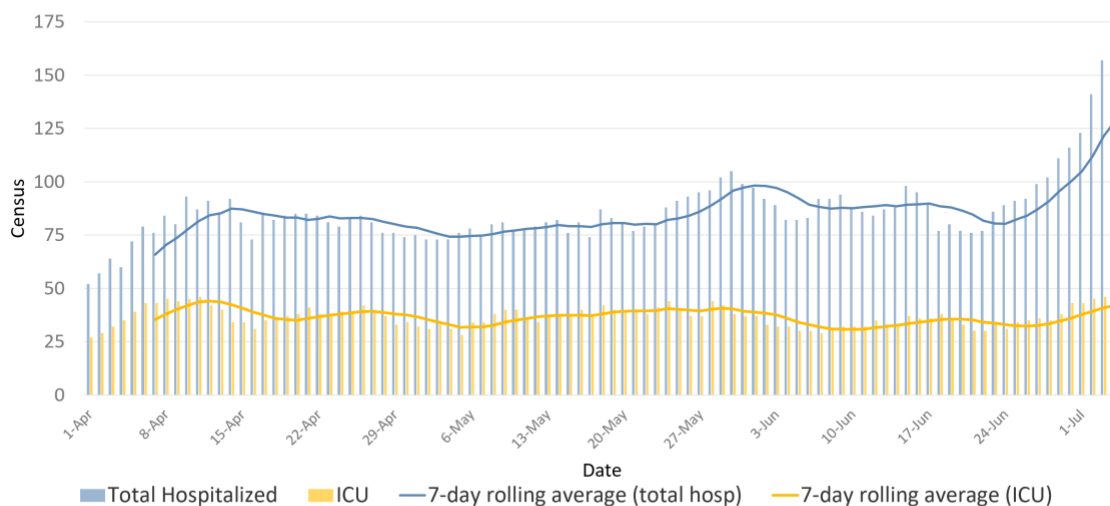
Hospital Capacity and Surge Planning

As of July 7, our hospital capacity indicators are:

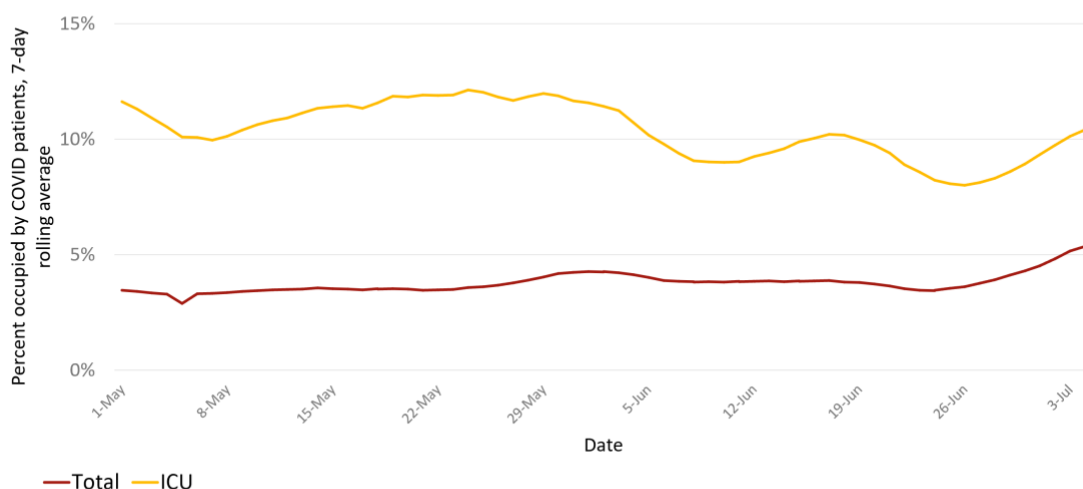
- 5.6% of the patients in hospital beds across Alameda County were confirmed COVID-19 positive, which is within our goal of 50% of less. This indicator remains a five.
- 12% of the patients in ICU beds were confirmed COVID-19 positive.
- 50% of the 2,602 total inpatient hospital beds were available, and 100% of the 738 surge beds were available.
- There were 324 requests for personal protective equipment (PPE) from the county in the last 30 days (up from 158 a week ago), and our goal is zero requests. The increase in PPE demand is thought to be due to the increase in cases and hospitalizations. This indicator is downgraded from a three to a two.

The medication remdesivir continues to be in very short supply. Remdesivir is the only antiviral drug shown so far to have activity against COVID-19 in randomized controlled trials. Its allocation program is transitioning from the State to AmerisourceBergen at the direction of the Federal Department of Health and Human Services. Remdesivir will have to be purchased by hospitals at approximately \$3,200 per treatment course or \$520 per vial under this program.

COVID-19 Patients Hospitalized in Alameda County, 2020



Percent hospital beds occupied by COVID-19 patients, Alameda County, 2020 7-day rolling average



Source: California Department of Public Health. Denominators: Total beds – all staffable inpatient beds including surge; ICU beds – staffed ICU beds including surge. Alameda County Health Care Services Agency. Alameda County Public Health Department. Celebrating Healthy People in Healthy Communities.

6

Top links:

- **HIV:** [FAQs for people living with HIV \(PLWH\)](#) and [Preguntas Frecuentes in Spanish](#), [Guidance for PLWH \(CDC\)](#), [Guidance for HIV providers](#)
- **HIV services during COVID-19:** [Click here for Contra Costa HIV services](#) and [see our online directory for Alameda County HIV services](#).
- **Key Communities:** [Harm Reduction Coalition](#), [Immigrants Rising](#), [Protecting Immigrant Families: Public Charge](#), [Healthcare for the Homeless](#)
- **COVID Testing, Food, Shelters:** [Alameda County COVID testing and services](#) and [isolation housing](#), [Contra Costa County COVID testing](#)
- **COVID PPE, staffing or testing supplies:** [Alameda County EMS– request PPE](#), [request staffing](#) or [request testing supplies](#).
- **Public Health Department Updates:** [Alameda County](#), [Contra Costa County](#), [Solano County](#), [California State](#)
- **COVID Data:** [Alameda County](#), [Contra Costa County](#), [Solano County](#), [California State](#), [California \(SF Chronicle\)](#), [National/Global \(JHU\)](#)
- **DIY Face Coverings and Masks:** [CDC \(easy no-sew\)](#), [Maker Mask \(sewn, science-based\)](#), [Olson Mask \(sewn\)](#)