



COVID-19 weekly updates: June 1-5, 2020

Key updates for this week:



East Bay Getting to Zero condemns racist violence and police brutality. Black and Brown communities hardest hit by the COVID-19 pandemic are also most impacted by the grief and trauma of state violence. We stand in solidarity with [#BlackLivesMatter](#) and recommit ourselves to addressing structural racism, homophobia and transphobia. Please see [our statement on police violence](#).

COVID-19 cases and hospitalizations in Alameda County continue to increase. Cases in Contra Costa County have recently stabilized after a week of increases.

Please support our communities to practice harm reduction when we are outside our homes or personal vehicles by:

- covering our face. If participating in a protest, also wear eye shields and gloves.
- maintaining our space: six or more feet away from each other.
- *and* practicing good hand hygiene with frequent use of alcohol-based hand sanitizer or hand washing.
- If you develop symptoms or are an essential worker, get tested for COVID: [click here for Alameda County](#) or [click here for Contra Costa County](#) testing sites. Testing is available for free and regardless of insurance or documentation status at many testing locations.

HIV services during COVID-19: [Click here for Contra Costa HIV services](#) and [see our online directory for Alameda County HIV services](#).

If your organization is in Alameda County and needs COVID-related supplies or staffing, please go to the [Emergency Medical Services website](#) to [request PPE](#), [request staffing](#) and [request testing supplies](#).

Cases and deaths by Bay Area county

A county-by-county look at how the spread of the virus seems to have slowed. The new case curve represents the 7-day moving average which accounts for variances in daily reporting. The change in new cases compares the number of cases in the past seven days to the previous seven days.

County	Total deaths	Total cases	New cases curve	Weekly change in new cases
Alameda	97	3,515		▲ 23 +5%
Santa Clara	143	2,819		▼ 48 -25%
San Francisco	43	2,613		▼ 14 -8%
San Mateo	84	2,212		▼ 72 -25%
Contra Costa	37	1,506		▲ 2 +1%
Sonoma	4	579		▼ 58 -51%
Solano	22	547		▼ 21 -30%
Marin	17	506		▲ 2 +2%
Napa	3	113		▼ 13 -76%

Sources: U.S. Centers for Disease Control and Prevention, the California Department of Public Health and county public health departments, exclusive Chronicle reporting

Providers conducting COVID testing in Alameda County are reminded to:

- Distribute [isolation orders](#) to all people testing for suspected COVID. The orders are available in 7 languages at the bottom of the [clinician guidance webpage](#).
- Refer people living in crowded conditions or experiencing homelessness in need of COVID isolation housing to [Project Roomkey](#).
- Go to the [Emergency Medical Services website](#) to [request PPE](#), [request staffing](#) and [request testing supplies](#).

Download links for Alameda County community or business guidance on: [summer camps](#), [graduations](#), [vehicular gatherings](#), [construction](#), [curbside retail pickups](#), [manufacturing and warehousing](#).

Download links for Alameda County clinical guidance on: [COVID-19 testing](#), [reporting COVID-19 cases](#), [Project Roomkey isolation housing](#), [reporting pediatric Multisystem Inflammatory Syndrome](#), and [resumption of non-urgent medical services](#).

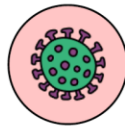
Progress on the Bay Area COVID-19 Indicators

[San Francisco Chronicle's COVID-19 Indicator Checklist](#) (updated weekly):

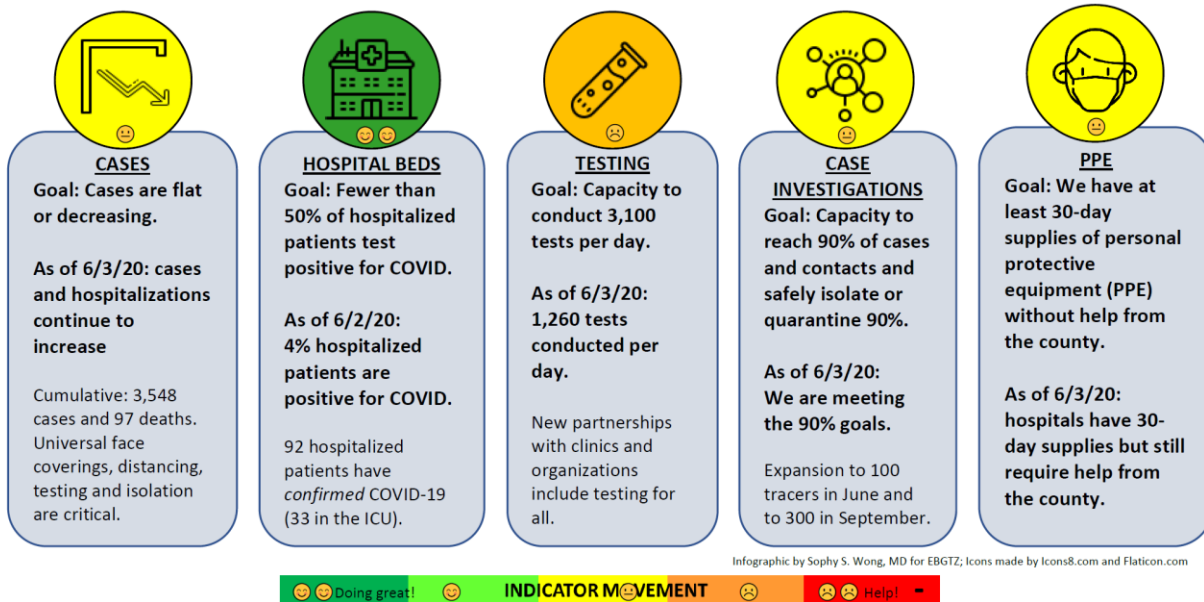
Checklist: How Bay Area counties are measuring progress

This chart will be updated weekly with information reported by the county officials. Last updated May 29, 2020 6:22 p.m.

County	Cases	Hospitals			Testing	Tracing		PPE
	Flat or decreasing	Counts flat or decreasing	Capacity below 50%	Hospitalizations over past two weeks	Tests per 100k people per day	Goal	Current staff	30-day supply
Alameda	✗	✓	✓			✗	80	✗
Contra Costa	✗	✓	✓			✗	60	✗
Marin	✗	✓	✓			✗	30	✓
San Francisco	✓	✓	✓			✗	276	✓
San Mateo	✗	✓	✓			✗	30	✗
Santa Clara	✗	✓	✓			✗	50	✗



Alameda County COVID-19 Indicators: How we are assessing progress on containing COVID-19

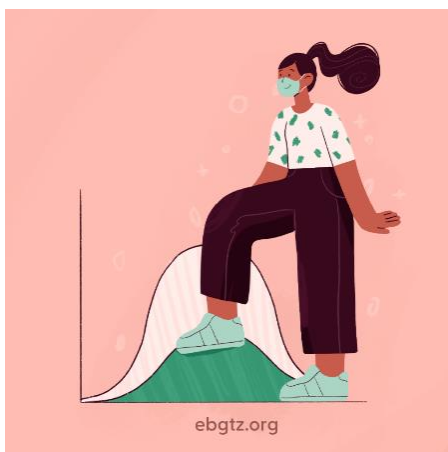


Progress on these indicators will inform decisions on how to move forward on California State's [Roadmap to Resilience](#).

To keep cases and hospitalizations from overwhelming the health care system, sheltering-in-place orders remain in effect in [Alameda County](#) and in [Contra Costa County](#), along with other Bay Area counties. The plan is to phase in more activities carefully and incrementally, moving at a slower pace than the state.

Updates for Alameda County in the main COVID strategy areas:

Sheltering, distancing and flattening the curve



Cases in Alameda County have been increasing for the past three weeks, and hospitalizations increased over the past two weeks with a peak of 105 confirmed hospitalized cases on May 30th. Our goal is for cases to be flat or decreasing. This indicator remains downgraded from a four (light green) to a three (yellow).

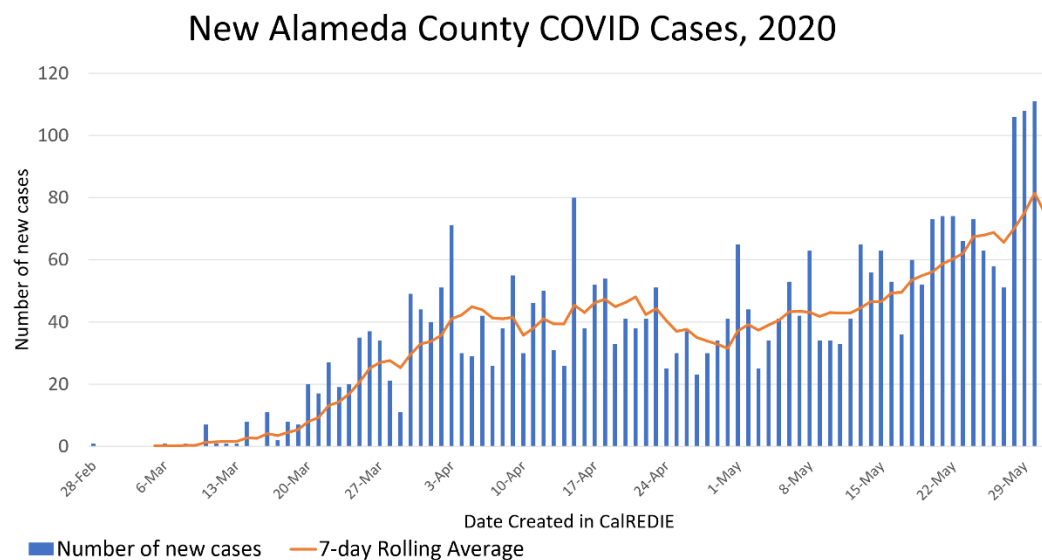
- As of June 3, there were 3,548 reported cases of COVID-19 and 97 deaths. This represents 5.9 deaths per 100,000 people, compared to 11 deaths per 100,000 people in California State overall.
- As of June 2, there were 92 hospitalized patients (the highest was 105 on 5/30), including 33 ICU patients (the highest was 46 on 4/11) with confirmed COVID.

Updated predictions continue to show that while our hospital capacity can likely handle a 20% increase in transmission rates, our health care system would be overwhelmed by August or September if there is a 50% increase in transmission rates in June.

All businesses and organizations are to consistently follow distancing and health safety protocols including:

- Support work from home when possible.
- Accommodations for 6 or more feet of physical distancing.
- Universal face coverings.
- Frequent hand washing and/or sanitizing.
- Enhanced cleaning and safety protocols.
- Support for staying home when ill.
- Support for getting tested.

For help with enforcement of workplace safety protocols, please email: COVID19compliance@acgov.org



Source: CalREDIE Data Distribution Portal download June 1, 2020 10:00 am; includes CalREDIE entries through May 31, 2020.



Alameda County Public Health Department
Celebrating Healthy People in Healthy Communities

Testing and screening

Alameda County is conducting an average of 1,400 COVID-19 tests per day, which is a 40% increase compared to a month ago and 40% of our goal of conducting 3,100 tests per day.

A new testing site at the West Oakland Health Center, located at 700 Adeline Street in Oakland, opened June 3rd with free testing available to any community member regardless of insurance and immigration status. New mobile testing sites will be opening next week in Alameda, Fremont, Newark and in the Fruitvale community of Oakland. La Clínica has a new partnership with Unity Council and will be providing testing in the Fruitvale community.

Testing locations can be downloaded from the [COVID-19 testing webpage](#) and searchable in this [interactive map of COVID-19 services](#) (click to filter for COVID-19 testing). Several sites offer free tests for any community member with symptoms and all essential workers regardless of symptoms.

Alameda County COVID-19 Testing



When testing resources allow, [Alameda County COVID-19 testing](#)



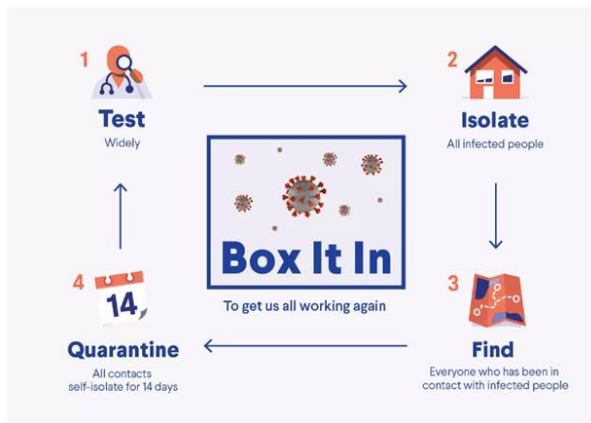
Alameda County
Health Care Services Agency



Alameda County Public Health Department
Celebrating Healthy People in Healthy Communities

[guidance](#) encourages testing all people with symptoms and all essential workers, especially those working in long-term care facilities, regardless of symptoms. Providers are reminded to distribute [isolation orders](#) to people testing with suspected COVID. If your facility needs COVID-related supplies, please complete these forms to [request PPE](#) and [request testing supplies](#).

Click here for information on [Contra Costa County COVID testing sites](#) that offer free COVID-19 testing for any person living in the county regardless of documents and insurance status.



Case and contact investigations, isolation and quarantine

Alameda County is meeting our goals to reach at least 90% of cases and contacts, and support 90% of those reached to isolate or quarantine safely.

On June 3, the Public Health Department piloted the new California State contact tracing data system. There is now a dedicated team working on the expansion of contact tracing teams in partnership with community-based organizations.

[Project Roomkey](#) has expanded capacity to provide isolation housing for people living in crowded conditions in addition to isolation housing for people experiencing homelessness. Providers are encouraged to refer people and communicate how important isolation is for keeping families and roommates safe.

California state has launched a new contact tracing program and public awareness campaign, called [California Connected](#). Fact sheets explaining contact tracing to patients and community members are available for download in [English](#) and [Spanish](#).

Providers are reminded to [report COVID-19 cases](#) in these high-risk settings such as health care facilities, long-term care and skilled nursing facilities, jails, shelters, encampments and other congregate settings within an hour of receiving the positive result.

Hospital capacity and surge planning

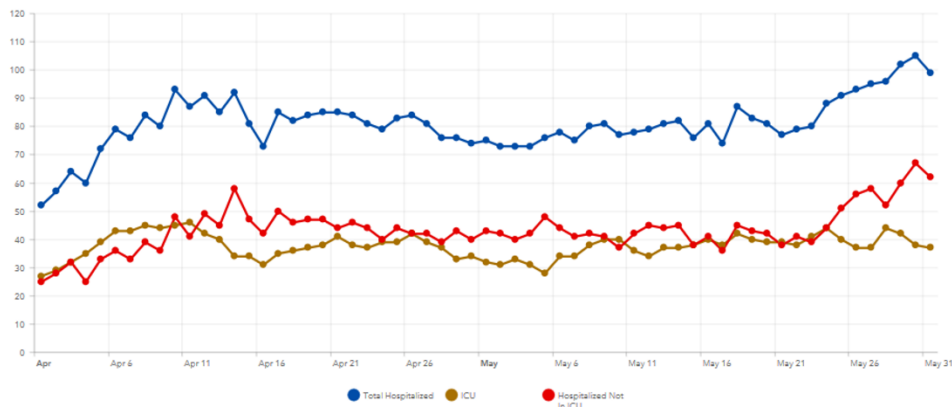
As of June 3, Alameda County hospital capacity indicators are:

- 4% of the patients in hospital beds across Alameda County were confirmed COVID-19 positive, which is within our goal of 50% of less. This indicator remains a five out of five.
- 12% of the patients in ICU beds were confirmed COVID-19 positive.
- Most hospitals are now reporting 30-day supplies of most types of personal protective equipment (PPE) but still requesting assistance for PPE procurement from the county. This indicator has been upgraded from a two to a three.

If your organization is in Alameda County and needs COVID-related supplies or staffing, please go to the [Emergency Medical Services website](#) to [request PPE](#), [request staffing](#) and [request testing supplies](#).

Alameda County COVID-19 hospitalizations: total in blue, hospitalized and not in ICU in red, and ICU cases in brown

Alameda County COVID-19 Hospitalizations (as of May 31, 2020)



Alameda County
Health Care Services Agency



Alameda County Public Health Department
Celebrating Healthy People in Healthy Communities

Top links:

- **HIV:** [FAQs for people living with HIV \(PLWH\)](#) and [Preguntas Frecuentes in Spanish](#), [Guidance for PLWH \(CDC\)](#), [Guidance for HIV providers](#)
- **Key Communities:** [Harm Reduction Coalition](#), [Immigrants Rising](#), [Protecting Immigrant Families: Public Charge](#), [Healthcare for the Homeless](#)
- **COVID Testing, Food, Shelters:** [Alameda County COVID testing and services](#), [Contra Costa County COVID testing](#)
- **COVID PPE, staffing or testing supplies:** [Alameda County EMS– request PPE](#), [request staffing](#) or [request testing supplies](#).
- **Public Health Department Updates:** [Alameda County](#), [Contra Costa County](#), [Solano County](#), [California State](#)
- **COVID Data:** [Alameda County](#), [Contra Costa County](#), [Solano County](#), [California State](#), [California \(SF Chronicle\)](#), [National/Global \(JHU\)](#)
- **DIY Face Coverings and Masks:** [CDC \(easy no-sew\)](#), [Maker Mask \(sewn, science-based\)](#), [Olson Mask \(sewn\)](#)